

SCALE RULES

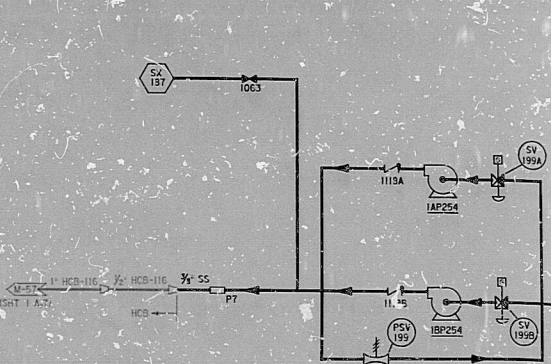
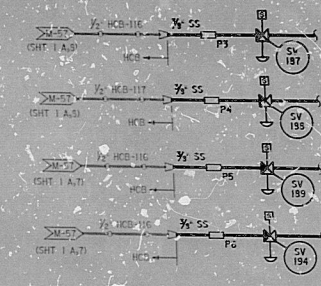
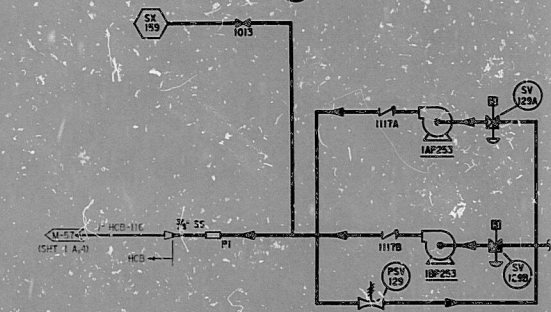
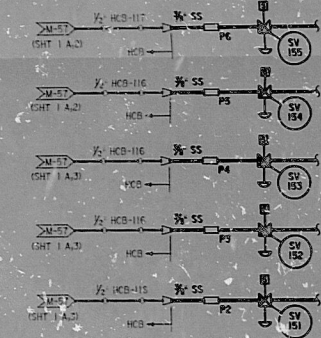
ISI-M-57

SIZE E

CLASSIFICATION

- CLASS 1
- CLASS 1 EXEMPT
- CLASS 2
- CLASS 2 EXEMPT
- CLASS 3
- CLASS 3 EXEMPT
- UNCLASSIFIED

This drawing and the design it covers are the property of BECHTEL. They are hereby loaned to you on the understanding that you will not reproduce, distribute, or use them in any way without the written consent of BECHTEL.



ASME SECTION XI NOTES:

- A. FLUID SYSTEMS OR PORTIONS OF SYSTEMS CLASSIFIED AS ASME SECTION III PER 10CFR50.55(a), REG. GUIDE 1.6(a) OR THE FEAR AND COLOR CODES TO REFLECT THOSE CLASSIFICATIONS, THE APPROPRIATE REQUIREMENTS OF ASME SECTION XI SHALL APPLY.
- B. DELETED
- C. DELETED
- D. DELETED
- E. DELETED
- F. DELETED
- G. DELETED
- H. DELETED
- I. DELETED
- J. DELETED

TI APERTURE CARD

COPY - ORIGINAL SIGNED BY

BECHTEL
SAN FRANCISCO
LIMERICK GENERATING STATION UNITS 1 & 2
PHILADELPHIA ELECTRIC COMPANY

SPECIFICATION
8031-P-500
APPENDIX A

ASME SECTION XI BOUNDARY P&ID
CONTAINMENT ATMOSPHERIC CONTROL

BOUNDARY P&ID
BASED ON SYSTEM
P&ID REV. 14

JOB No.	DRAWING No.	REV
8031	ISI-M-57	SHEET 2 OF 2

8 052410262315M57S2.DGN

7

6

5

4

3

2

3444 8/2/82

PDR RIDS

8501070518

