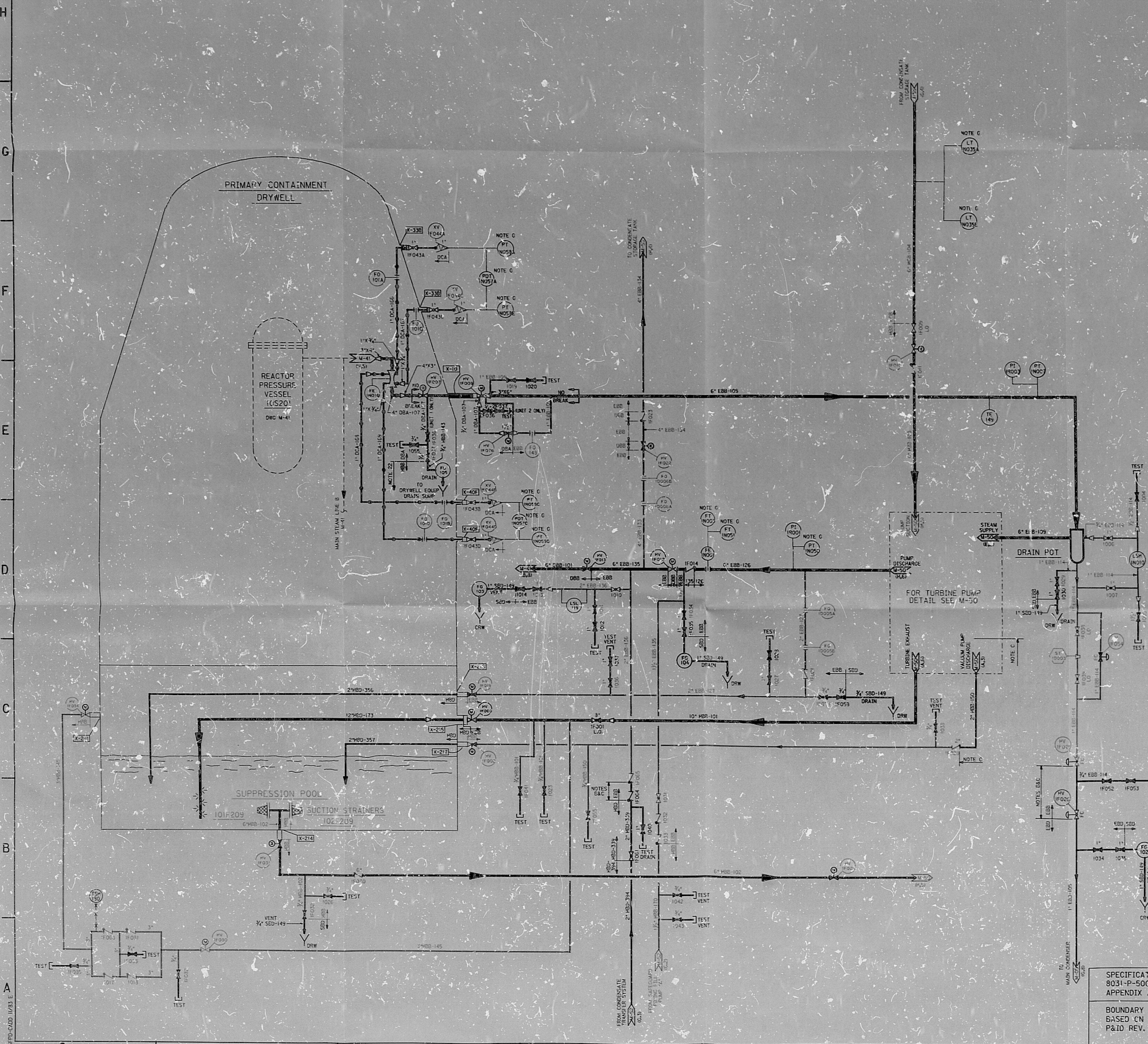


CLASSIFICATION

CLASS 1
CLASS 1 EXEMPT
CLASS 2
CLASS 2 EXEMPT
CLASS 3
CLASS 3 EXEMPT
UNCLASSIFIED

This drawing and the design it covers are the property of BECHTEL. They are hereby loaned to you on the understanding that you will not reproduce, copy, or disseminate them in any form without the prior written consent given by the holder to the borrower.



F&ID NOTES: (NO. SAME AS ON P&ID)

22. DESIGN, FABRICATION, MATERIAL, PROCUREMENT, ERECTION AND TESTING FOR ALL PIPING, VALVES AND EQUIPMENT SHOWN WITHIN THE BOUNDARY OF THIS P&ID, MAY BE IN ACCORDANCE WITH THE REQUIREMENTS OF THE PIPING CLASS DESIGNATION, DESIGN CODE 'D' WITH THE FOLLOWING EXCEPTIONS:

ALL CLEANING REQUIREMENTS SHALL BE PER THE ORIGINAL LINE CLASS DESIGNATION.

WELDING PROCEDURES TO BE USED SHALL BE AS REQUIRED PER THE ORIGINAL LINE CLASS DESIGNATION.

ASME SECTION XI NOTES:

A. FLUID SYSTEMS OR PORTIONS OF SYSTEMS CLASSIFIED AS ASME SECTION III PER 100FR5000, REG. CODE 32E OR THE FEASIBLE COLOR CODED TO REFLECT THOSE CLASSIFICATIONS, THE APPROPRIATE REQUIREMENTS OF ASME SECTION XI SHALL APPLY.

B. VALVE IS LOCATED IN PORTION OF SYSTEM OPTIONALLY CLASSIFIED AS ASME SECTION III. TESTING PER ASME SECTION XI SUBJECTS TO ENVELOPE THE PUMP AND VALVE IS PROGRAM PLAN IS REQUIRED.

C. PIPING VALVES AND EQUIPMENT SHOWN WITHIN THIS SYMBOL IS— NOTE C1 REEL, OPTIONALLY CLASSIFIED AS ASME SECTION III. THEREFORE, THE REQUIREMENTS OF ASME SECTION XI DO NOT APPLY. DESIGN, FABRICATION, MATERIAL, PROCUREMENT, ERECTION AND TESTING MAY BE IN ACCORDANCE WITH THE REQUIREMENTS OF PIPING CLASS DESIGNATION DESIGN CODE 'D' WITH THE FOLLOWING EXCEPTIONS:

(1) CLEANING REQUIREMENTS SHALL BE PER THE ORIGINAL CLASS DESIGNATION.

(2) WELDING PROCEDURES TO BE USED SHALL BE AS REQUIRED PER THE ORIGINAL CLASS DESIGNATION.

D. FOR VENTS, DRAINS AND TEST CONNECTIONS ON CLASS 2 AND CLASS 3 PIPING THE ASME SECTION XI BOUNDARY EXTENDS UP TO AND INCLUDES THE FIRST ISOLATION VALVE. DESIGN, FABRICATION, MATERIAL, PROCUREMENT, ERECTION AND TESTING FOR PIPING AND VALVES DOWNSTREAM OF THE FIRST VALVE MAY BE IN ACCORDANCE WITH THE REQUIREMENTS OF THE PIPING CLASS DESIGNATION DESIGN CODE 'D' WITH THE FOLLOWING EXCEPTIONS:

(1) CLEANING REQUIREMENTS SHALL BE PER THE ORIGINAL CLASS DESIGNATION.

(2) WELDING PROCEDURES TO BE USED SHALL BE AS REQUIRED PER THE ORIGINAL CLASS DESIGNATION.

E. FOR TEMPERATURE SENSING ELEMENTS (e.g. RTD) THE THERMOCOUPLE WELD COUPLING WELDS ARE WITHIN THE ASME SECTION XI BOUNDARY.

F. FOR INSTRUMENTATION TUBING SHOWN UNCLASSIFIED (BLACK) THE APPROPRIATE REQUIREMENTS OF ASME SECTION XI APPLY UP TO AND INCLUDING THE INSTRUMENT ROOT VALVE. THE ASME CODE CLASS IS THE SAME AS THE PROCESS PIPE OR COMPONENT EXCEPT THAT IT IS ALWAYS EXEMPT.

G. FOR INSTRUMENTATION TUBING SHOWN WITH COLOR CODING THE APPROPRIATE REQUIREMENTS OF ASME SECTION XI APPLY UP TO AND INCLUDING THE INSTRUMENT VALVE. THE ASME CODE CLASS IS THE SAME AS THE PROCESS PIPE OR COMPONENT UP TO AND INCLUDING THE INSTRUMENT ROOT VALVE EXCEPT THAT IT IS ALWAYS EXEMPT. THE TUBING COLOR CLASSIFICATION REPRESENTS THE ASME CODE CLASS FROM THE INSTRUMENT ROOT VALVE TO THE INSTRUMENT VALVE.

H. PIPE TO TUBING ADAPTERS IN MOST CASES SHALL BE THE ASME CODE CLASSIFICATION OF THE INSTRUMENT ROOT VALVE AND IN SOME CASES IT IS THE TUBING CODE CLASS. SEE DRAWING M-533-C-000 SHEET 1 OF 2 IN SPECIFICATION 8031-P-500 FOR THE ADAPTER CODE CLASS.

TI APERTURE CARD

COPIES - COPY ORIGINAL STORED BY

1	REVISED PER P&ID COMMENTS	COPIES	COPIES	COPIES	COPIES
2	ISSUED FOR ISI PROGRAM	COPIES	COPIES	COPIES	COPIES
3	ISSUED FOR ISI PROGRAM	COPIES	COPIES	COPIES	COPIES
4	ISSUED FOR ISI PROGRAM	COPIES	COPIES	COPIES	COPIES
5	ISSUED FOR ISI PROGRAM	COPIES	COPIES	COPIES	COPIES
6	ISSUED FOR ISI PROGRAM	COPIES	COPIES	COPIES	COPIES
7	ISSUED FOR ISI PROGRAM	COPIES	COPIES	COPIES	COPIES
8	ISSUED FOR ISI PROGRAM	COPIES	COPIES	COPIES	COPIES
9	ISSUED FOR ISI PROGRAM	COPIES	COPIES	COPIES	COPIES
10	ISSUED FOR ISI PROGRAM	COPIES	COPIES	COPIES	COPIES

BECHTEL
SAN FRANCISCO

LIMERICK GENERATING STATION UNITS 1 & 2
PHILADELPHIA ELECTRIC COMPANY

SPECIFICATION
8031-P-500
APPENDIX A

BOUNDARY P&ID
BASED ON SYSTEM
P&ID REV. 26

ASME SECTION XI BOUNDARY P&ID
REACTOR CORE ISOLATION COOLING

JOB No.	8031	DRAWING No.	ISI-M-49	REV.	1
---------	------	-------------	----------	------	---

PDR RIDS

85LLO7Q487

