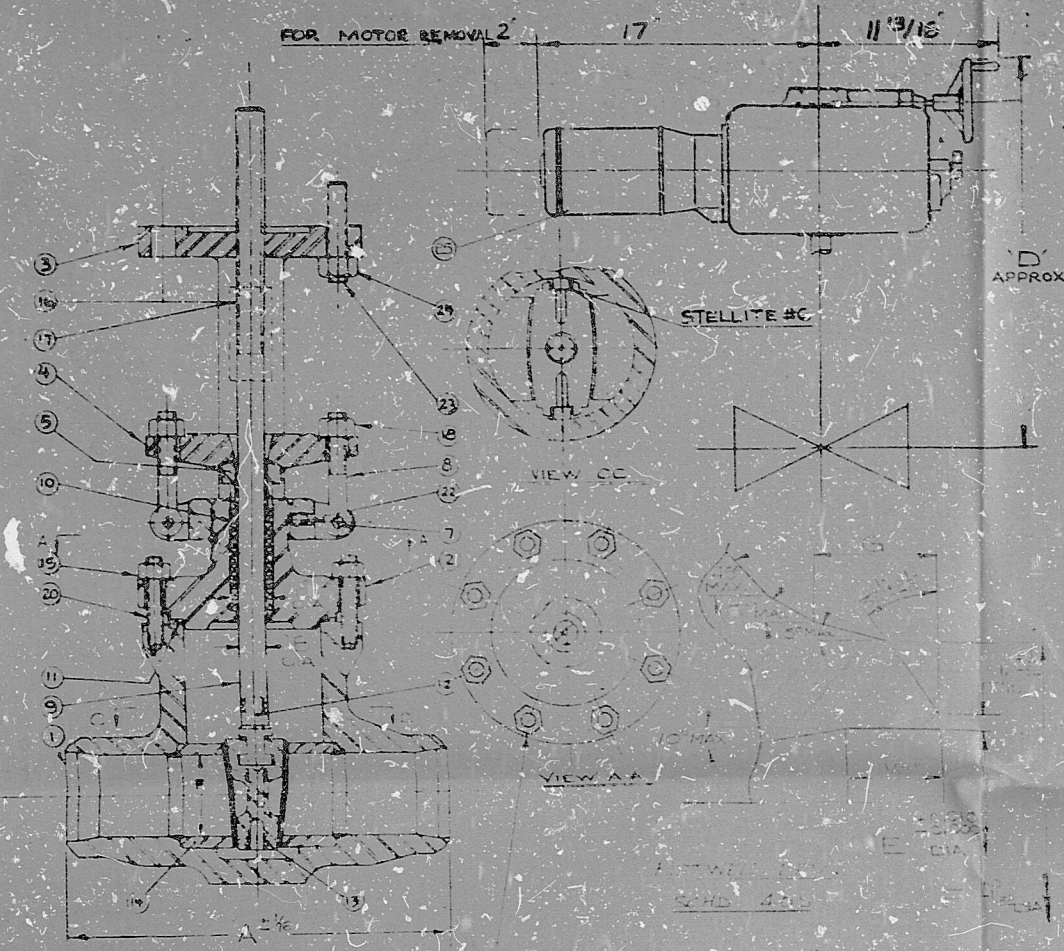


VALVE SIZE	A	B	C	D	E	F	G	WEIGHT APPROX.	H TORQUE	PACKING RING	SEALING
3"	1 1/8	1 1/8	1 3/8	57	3.068	3.192	.540	35 lbs	G7	1/2" x 1 1/2" x 1/2" (316)	1/2" x 1 1/2" x 1/2" (316)
4"	1 1/2	1 3/8	2	41	4.026	4.578	.642	405 lbs	90	1/2" x 2" x 1/2" (316)	1/2" x 2" x 1/2" (316)



**COORDINATING PRINT**  
 DATE: 6-6-74  
 ROUTE: INTERNAL  
 DESIGNED BY: [Signature]  
 CHECKED BY: [Signature]  
 APPROVED BY: [Signature]  
 RETURN TO R.E. BY 6-17-74

**VELAN ENGINEERING COMPANIES**  
 PLANT: BURLINGTON, MONTREAL, LEVERETT  
 FORGED STEEL BODY  
 NAME PLATE DETAIL  
 VELAN CO.  
 PSI AT "F"  
 SER. NO. [Blank]  
 YEAR BUILT 1974

LIST OF MATERIALS

NO.	NAME	QTY	MATERIAL	SPEC.	SA. NO.	PART NO.	REMARKS
1	BODY	1	C/S GR. 2	ASTM-A105	SA-105-68		FORGING
2	BONNET	1	C/S GR. 2	ASTM-A105	SA-105-68		FORGING BACKBEAT STEEL
3	YOKE	1	CAST C/S GR WCB	ASTM-A216			
4	GLAND FLANGE	1	CAST C/S GR WCB	ASTM-A216			
5	GLAND	1	S/S GR 410	ASTM-A479			
6							
7	HINGE PIN	2	C/S 1312	ASTM-A105			
8	GLAND STUD	2	S/S GR B3	ASTM-A193			SEE TABLE
9	STEM	1	S/S 410	ASTM-A479			HARDENED TO 1750-1850°F TEMPERED TO 150°F
10	PACKING RING	11	J CRANE 187-1				SEE TABLE
11	GASKET, SPIRAL WOUND	1	S/S 316 C ASB T/M	MIL-G21032			SEE TABLE
12	WEDGE GUIDE	2	S/S 304	ASTM-A276			
13	WEDGE	1	C/S GR WCB	ASTM-A216	SA-216-69		STELLITE #6
14	SEAT RING	2	C/S WCB	ASTM-A216			STELLITE #6
15							
16	NAME PLATE	1	S/S 302	ASTM-A167			
17	RIVET	4	STEEL	COMMERCIAL			
18	GLAND NUT	2	S/S GR B3	ASTM-A194			SEE TABLE
19	BONNET NUT	8	C/S GR 2H	ASTM-A194	SA-194-69		SEE TABLE
20	BONNET STUD	8	CHR MOLY GR B7	ASTM-A193	SA-193-69		SEE TABLE
21							
22	SET SCREW	2	STEEL	COMMERCIAL			
23	OPER STUD	4	CHR MOLY GR B7	ASTM-A193			
24	OPER NUT	4	C/S GR 2H	ASTM-A194			
25	OPERATOR	1	LIMITORQUE	SMB-CO-5			
26							

NOTES:  
 1. NAME PLATE SERIAL NUMBER SHALL BE ENGRAVED ON THE BODY.  
 2. ALL WELDS SHALL BE FULL PENETRATION WELDS.  
 3. MARKED ZED NUCLEAR CLASS VALVE SERIAL NO. [Blank]  
 4. NAME PLATE SHALL BE ENGRAVED WITH DESIGN TEMP. [Blank]  
 5. VELAN CO. PSI AT "F" SER. NO. [Blank] YEAR BUILT 1974

PART	Q. C. REQUIREMENTS						
	UT	PT	MT	RT	DRY	WET	CERT
BODY							✓
BONNET							✓
WEDGE							✓
DISC							✓
STEM							✓
BOLTING							✓
WELDS							✓
HARDFACING							✓
HYDRO							✓

ITEM 12 DESIGN TEMPERATURE 150°F  
 DESIGN PRESSURE 100 PSIG  
 ITEM 23 DESIGN TEMPERATURE 300°F  
 DESIGN PRESSURE 75 PSIG  
 CERTIFICATE OF COMPLIANCE TO MATL SPEC. 6750-M-253-19-2

3" x 4" B.B. GATE VALVE	DATE: 13/72	QTY: 1
NUCLEAR CLASS N2		
FOR ANSI 150 LB CLASS		
REVISION: A	DATE: 24 APR 74	
		SHEET NO. P35327-10

DOCUMENT NO. 12717-19

TI APERTURE CARD

8409240260



PDR RIDS

8409240260

