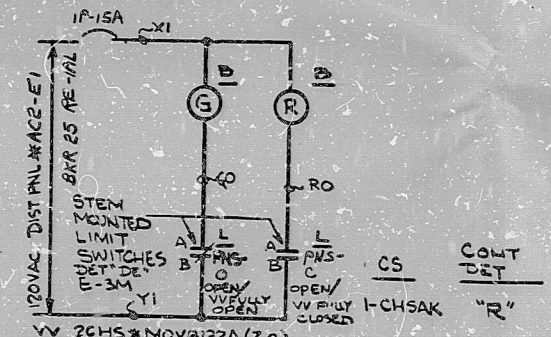


| ROTOR | LIMIT SWITCH CONTACT DEVELOPMENT | | | FUNCTION | REFERENCE |
|-------|----------------------------------|---|---|-----------------|--------------|
| | VALVE POSITION | A | B | | |
| 1 | FULLY OPEN | | | BYPASS | |
| 2 | | | | SPARE | |
| 3 | | | | GREEN LT | THIS DWG |
| 4 | | | | OPEN LIMIT | |
| 5 | | | | BYPASS | |
| 6 | | | | SIGNAL ISOL-PCS | E-116A SH. 4 |
| 7 | | | | SPARE | |
| 8 | | | | SPARE | |
| 9 | | | | SPARE | |
| 10 | | | | SPARE | |
| 11 | | | | SPARE | |
| 12 | | | | SPARE | |
| 13 | | | | SPARE | |
| 14 | | | | SPARE | |
| 15 | | | | RED LT | THIS DWG |
| 16 | | | | SPARE | |

- NOTES
1. ALL EQUIPMENT LOCATED AT RESPECTIVE MCC EXCEPT AS NOTED
 2. APPLICABLE LOGIC DIAGRAM LSK-26-1
 3. CIRCUIT NO. TO PRECEDE WIRE NO.
 4. TORQUE SWITCHES TQS-O & TQS-C STOP MOTOR IF MECHANICAL OVERLOAD OCCURS DURING OPENING OR CLOSING CYCLE.
 5. FOR LOCATION REFERENCE SEE E-2B

NUCLEAR SAFETY RELATED



| NO. | DATE | BY | CHKD | APP'D | REASON | REV. | BY | CHKD | APP'D |
|-----|----------|-----|------|-------|--------|------|-----|------|-------|
| 1 | 1/24/83 | ... | ... | ... | ... | 1 | ... | ... | ... |
| 2 | 2/22/83 | ... | ... | ... | ... | 2 | ... | ... | ... |
| 3 | 7/20/83 | ... | ... | ... | ... | 3 | ... | ... | ... |
| 4 | 8/24/81 | ... | ... | ... | ... | 4 | ... | ... | ... |
| 5 | 8-5-79 | ... | ... | ... | ... | 5 | ... | ... | ... |
| 6 | 10-12-76 | ... | ... | ... | ... | 6 | ... | ... | ... |
| 7 | 1-9-74 | ... | ... | ... | ... | 7 | ... | ... | ... |

ELEMENTARY DIAGRAM-480V MKC CKTS
 CHARGING PUMP DISCHARGE VALVE
 BEAVER VALLEY POWER STATION-UNIT 2
 DUCUESNE LIGHT COMPANY
 STOP & WASTON ENGINEERING CORPORATION
 12241-E-66H

8409210297

TI
 APERTURE
 CARD

PDR RIDS

8409210297

