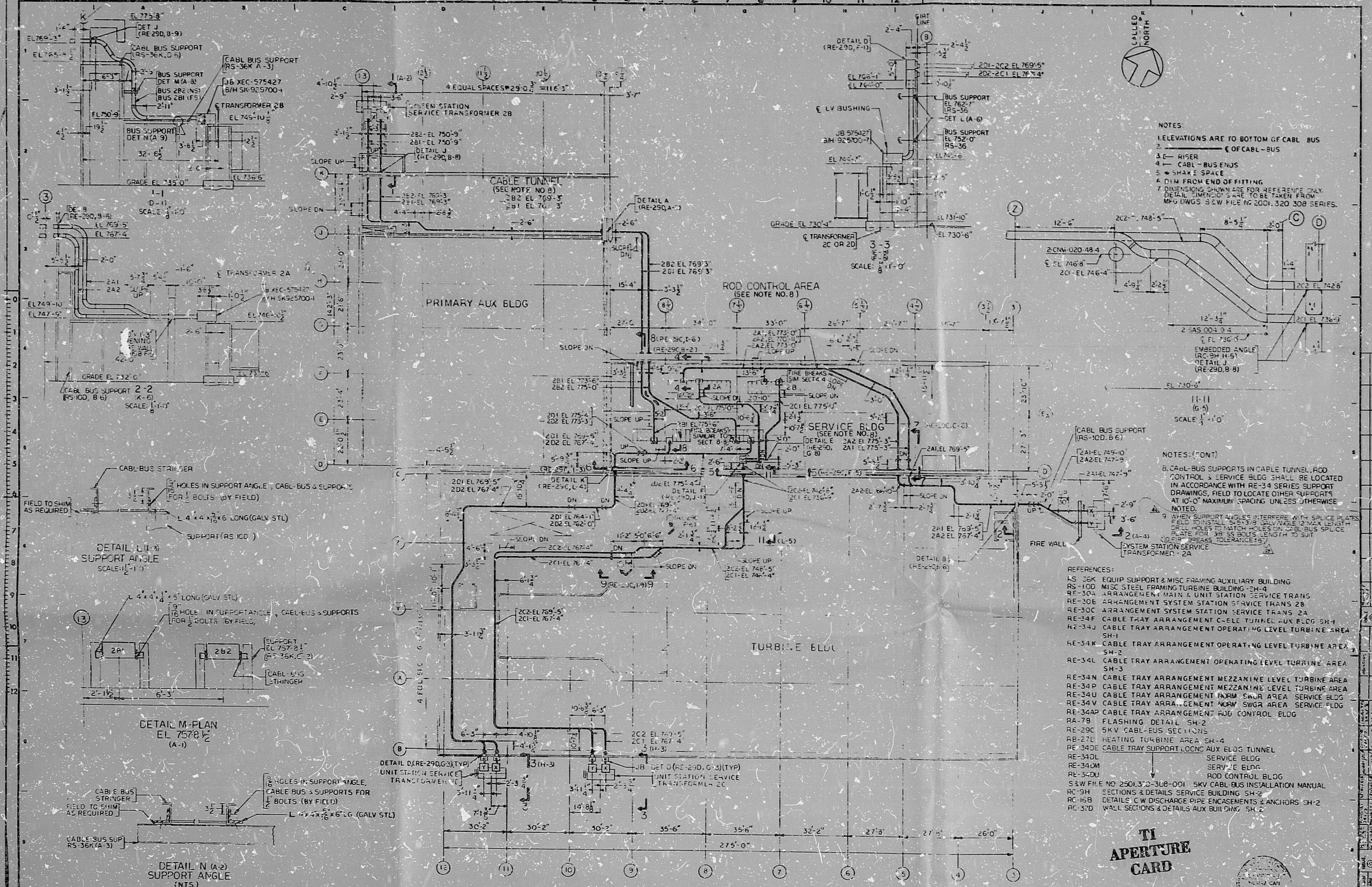


No. 10080-RE-29A



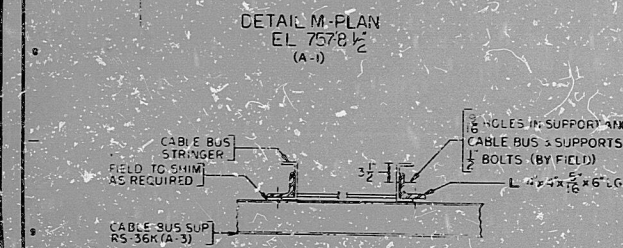
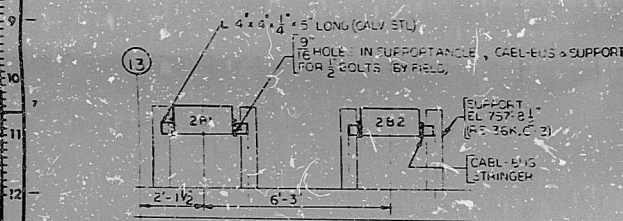
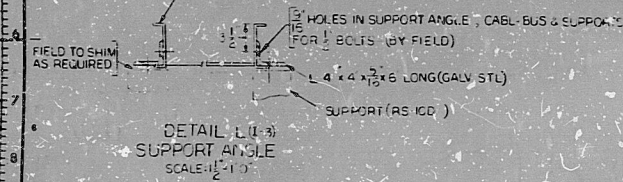
NOTES

1. ELEVATIONS ARE TO BOTTOM OF CABLE BUS
2. OF CABLE BUS
3. C - RISER
4. CABLE BUS ENDS
5. 6" SHARP SPACE
6. DIM FROM END OF FITTING
7. DIMENSIONS SHOWN ARE FOR REFERENCE ONLY. DETAIL DIMENSIONS ARE TO BE TAKEN FROM MFG DWGS. S&W FILE NO. 2001.320.309 SERIES.

NOTES (CONT)

8. CABLE BUS SUPPORTS IN CABLE TUNNEL, ROD CONTROL & SERVICE BLDG SHALL BE LOCATED IN ACCORDANCE WITH RE-34 SERIES SUPPORT DRAWINGS. FIELD TO LOCATE OTHER SUPPORTS AT 10'-0" MAXIMUM SPACING UNLESS OTHERWISE NOTED.
9. WHEN SUPPORT ANGLES INTERFERE WITH SPLICE PLATES, FIELD TO INSTALL 2x4x8 SERVICE BLDG MEZZANINE LEVEL TURBINE AREA. FIELD TO MATCH HOLES ON CABLE BUS SPLICE PLATE FOR 1/8" BOLT LENGTH TO SUIT. COILS BREAKS TOLERANCE ±1/4".

- REFERENCES:
- AS-36K EQUIP SUPPORT & MISC FRAMING AUXILIARY BUILDING
 - RS-100 MISC STEEL FRAMING TURBINE BUILDING SH-4
 - RE-30A ARRANGEMENT MAIN & UNIT STATION SERVICE TRANS
 - RE-30B ARRANGEMENT SYSTEM STATION SERVICE TRANS 2B
 - RE-30C ARRANGEMENT SYSTEM STATION SERVICE TRANS 2A
 - RE-34F CABLE TRAY ARRANGEMENT C-LEVEL TUNNEL AUX BLDG SH-1
 - RE-34J CABLE TRAY ARRANGEMENT OPERATING LEVEL TURBINE AREA SH-1
 - RE-34K CABLE TRAY ARRANGEMENT OPERATING LEVEL TURBINE AREA SH-2
 - RE-34L CABLE TRAY ARRANGEMENT OPERATING LEVEL TURBINE AREA SH-3
 - RE-34N CABLE TRAY ARRANGEMENT MEZZANINE LEVEL TURBINE AREA
 - RE-34P CABLE TRAY ARRANGEMENT MEZZANINE LEVEL TURBINE AREA
 - RE-34Q CABLE TRAY ARRANGEMENT NORM SWGR AREA SERVICE BLDG
 - RE-34V CABLE TRAY ARRANGEMENT NORM SWGR AREA SERVICE BLDG
 - RE-34AP CABLE TRAY ARRANGEMENT ROD CONTROL BLDG
 - RA-7B FLASHING DETAIL SH-2
 - RE-29C SKV CABLE BUS SECTION
 - RB-270 HEATING TURBINE AREA SH-4
 - RE-34DE CABLE TRAY SUPPORT CONC AUX ELOG TUNNEL
 - RE-34DL SERVICE BLDG
 - RE-34LM SERVICE BLDG
 - RE-34DU ROD CONTROL BLDG
 - S&W FILE NO. 2501.373-318-001 SKV CABLE BUS INSTALLATION MANUAL
 - RC-9H SECTIONS & DETAILS SERVICE BUILDING SH-2
 - RC-15B DETAILS C/W DISCHARGE PIPE ENCASUREMENTS & ANCHORS SH-2
 - RC-37D WALL SECTIONS & DETAILS AUX BUILDING SH-2



PLAN SCALE: 1/16\"/>

TI APERTURE CARD

APPROVED: [Signature] 11/7/62 E

DUQUESNE LIGHT COMPANY ENGINEERING & CONSTRUCTION PITTSBURGH, PA.		ARRANGEMENT SKV CABLE BUS BEAVER VALLEY POWER STATION UNIT NO. 2	
SCALE: DATE: 12-20-76 DRAWN: L.M.H. CHECKED: P.M.G. INCHES: 1/8"	PROJECT NO.: 10080-RE-29A SHEET NO.: 29A	S&W DWG. NO. 12241-RE-29A-8B	AA No. 10080-RE-29A

8409210249

PDR RIDS

8409210249

