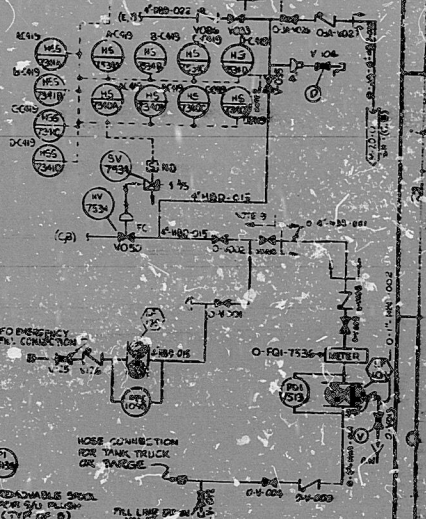


SYSTEM JS

REF	REFERENCE DRAWING	REVISED	DATE
1	FUEL OIL SYSTEM	M-301-40	11-27-55
2	GENERAL ARRANGEMENT 300 GAL	M-301-35	11-27-55
3	200 GAL DAY TANK	T-301	11-27-55
4	200 GAL STORAGE TANK	M-301-30	11-27-55
5	LOCAL ENGINE CONTROL PANEL	M-301-25	11-27-55
6	REMOTE ENGINE CONTROL PANEL	M-301-20	11-27-55
7	CONTROL LOG DIAGRAM	M-301-15	11-27-55

- NOTES:
- D-C 300 FUEL SYSTEM AND DAY TANK ARE SYSTEM L2
 - OPER. OPERATIONS AS SHOWN THROUGH D-300 ARE SHOWN BY-TOO SHOWN UNITS BY VENDOR
 - FUEL OIL STORAGE TANK NOZZLE SERVICE:
 - (A) PULL (A)
 - (B) SPARE (A)
 - (C) VENT/OVERFLOW (1)
 - (D) DAY TANK OVERFLOW INLET (E)
 - (F) LEVEL GAGE SHOWN HORIZONTAL SAMPLE CHAINING (G)
 - (H) HIGH LEVEL ALARM PULL VALVE (G)
 - (I) MANHOLE (G)
 - (J) DRAW OFF (F) AND SAMPLE CONNECTION
 - (K) PUMP INLET (E)
 - DELETED
 - FUEL OIL SYSTEM IS FURTHER DETAILED IN REFERENCE 1 FOR INTERFACES (I) AND (J) SEE REFERENCES 1 AND 2
 - THIS P&ID CONTAINS SYSTEMS OR PORTIONS OF SYSTEMS:
 - (A) AUXILIARY OIL STORAGE AND TRANSFER
 - (B) DIESEL FUEL OIL TRANSFER AND STORAGE
 - DELETED
 - STRAINING DOWNSTREAM OF THE INDICATED SERVICE REQUIRED PERFORM ANALYSIS PER BP TOP (MODIFIED SPECIMEN ANALYSIS) TO ALLOW FOR EMERGENCY REFILLING OF THE OIL STORAGE TANKS
 - PRESSURE GAGE ROOT VALVES ON ASBESTOS SECTION E, CLASS 2 OR 3 LINES ON THIS P&ID SHALL BE IN THE OPEN POSITION ONLY WHILE BEING READ BY AN OPERATOR. OTHERWISE THESE ROOT VALVES SHALL REMAIN IN THE CLOSED POSITION
 - LET P&ID THRU Q AND THEIR ASSOCIATED TUNING ARE TO BE INSTALLED LAST

TI APERTURE CARD
FOR INFORMATION ONLY



1	REVISION	DATE	BY	CHKD
1	ISSUE FOR CONSTRUCTION	11-27-55	J. J. [Signature]	[Signature]
2	REVISION	DATE	BY	CHKD
3	REVISION	DATE	BY	CHKD
4	REVISION	DATE	BY	CHKD
5	REVISION	DATE	BY	CHKD
6	REVISION	DATE	BY	CHKD
7	REVISION	DATE	BY	CHKD
8	REVISION	DATE	BY	CHKD
9	REVISION	DATE	BY	CHKD
10	REVISION	DATE	BY	CHKD

RECEIVED
PUBLIC SERVICE ELECTRIC AND GAS COMPANY
HOPE CREEK GENERATING STATION

P&ID
DIESEL ENGINE AUXILIARY SYSTEMS
FUEL OIL

NOV 25 1955 M-301-40 OF 3 10

8409190194

PDR RIDS

