

1-09-76

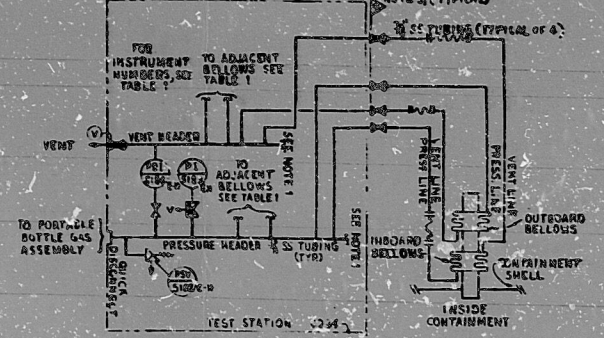
SHEET 8

**TABLE 1**  
LOCAL LEAKAGE RATE TEST STATIONS FOR EXPANSION BELLOWS

STATION	DESCRIPTION	TEST POINT	PENETRATIONS
STATION C230 (BL 77'-0" AZIM-84°)	RM 5125A PI 5125A PCI 5125A	PC1 5125A	WIC4A, WIC4B, WIC4C, WIC4D, WIC4E, WIC4F, WIC4G, WIC4H, WIC4I, WIC4J, WIC4K, WIC4L, WIC4M, WIC4N, WIC4O, WIC4P, WIC4Q, WIC4R, WIC4S, WIC4T, WIC4U, WIC4V, WIC4W, WIC4X, WIC4Y, WIC4Z
STATION C231 (BL 77'-0" AZIM-132°)	RM 5125B PI 5125B PCI 5125B	PC1 5125B	WIC4A, WIC4B, WIC4C, WIC4D, WIC4E, WIC4F, WIC4G, WIC4H, WIC4I, WIC4J, WIC4K, WIC4L, WIC4M, WIC4N, WIC4O, WIC4P, WIC4Q, WIC4R, WIC4S, WIC4T, WIC4U, WIC4V, WIC4W, WIC4X, WIC4Y, WIC4Z
STATION C232 (BL 77'-0" RM 4715 W WALL)	RM 5125C PI 5125C PCI 5125C	PC1 5125C	WIC4A, WIC4B, WIC4C, WIC4D, WIC4E, WIC4F, WIC4G, WIC4H, WIC4I, WIC4J, WIC4K, WIC4L, WIC4M, WIC4N, WIC4O, WIC4P, WIC4Q, WIC4R, WIC4S, WIC4T, WIC4U, WIC4V, WIC4W, WIC4X, WIC4Y, WIC4Z
STATION C233 (BL 77'-0" AZIM-30°)	RM 5125D PI 5125D PCI 5125D	PC1 5125D	WIC4A, WIC4B, WIC4C, WIC4D, WIC4E, WIC4F, WIC4G, WIC4H, WIC4I, WIC4J, WIC4K, WIC4L, WIC4M, WIC4N, WIC4O, WIC4P, WIC4Q, WIC4R, WIC4S, WIC4T, WIC4U, WIC4V, WIC4W, WIC4X, WIC4Y, WIC4Z
STATION C234 (BL 107'-0" RM 4315 W WALL)	RM 5125E PI 5125E PCI 5125E	PC1 5125E	WIC4A, WIC4B, WIC4C, WIC4D, WIC4E, WIC4F, WIC4G, WIC4H, WIC4I, WIC4J, WIC4K, WIC4L, WIC4M, WIC4N, WIC4O, WIC4P, WIC4Q, WIC4R, WIC4S, WIC4T, WIC4U, WIC4V, WIC4W, WIC4X, WIC4Y, WIC4Z
STATION C235 (BL 107'-0" RM 4320 N WALL)	RM 5125F PI 5125F PCI 5125F	PC1 5125F	WIC4A, WIC4B, WIC4C, WIC4D, WIC4E, WIC4F, WIC4G, WIC4H, WIC4I, WIC4J, WIC4K, WIC4L, WIC4M, WIC4N, WIC4O, WIC4P, WIC4Q, WIC4R, WIC4S, WIC4T, WIC4U, WIC4V, WIC4W, WIC4X, WIC4Y, WIC4Z
STATION C236 (BL 107'-0" RM 4328 S WALL)	RM 5125G PI 5125G PCI 5125G	PC1 5125G	WIC4A, WIC4B, WIC4C, WIC4D, WIC4E, WIC4F, WIC4G, WIC4H, WIC4I, WIC4J, WIC4K, WIC4L, WIC4M, WIC4N, WIC4O, WIC4P, WIC4Q, WIC4R, WIC4S, WIC4T, WIC4U, WIC4V, WIC4W, WIC4X, WIC4Y, WIC4Z
STATION C237 (BL 140'-0" RM 7504 N WALL 102U)	RM 5125H PI 5125H PCI 5125H	PC1 5125H	WIC4A, WIC4B, WIC4C, WIC4D, WIC4E, WIC4F, WIC4G, WIC4H, WIC4I, WIC4J, WIC4K, WIC4L, WIC4M, WIC4N, WIC4O, WIC4P, WIC4Q, WIC4R, WIC4S, WIC4T, WIC4U, WIC4V, WIC4W, WIC4X, WIC4Y, WIC4Z

**TABLE 2**  
LOCAL LEAKAGE RATE TEST STATIONS FOR ELECTRIC PENETRATION ASSEMBLY

STATION	DESCRIPTION	TEST POINT	PENETRATIONS
STATION C238 (BL 107'-0" AZIM-49°)	RM 5125I PI 5125I PCI 5125I	PC1 5125I	WIC4A, WIC4B, WIC4C, WIC4D, WIC4E, WIC4F, WIC4G, WIC4H, WIC4I, WIC4J, WIC4K, WIC4L, WIC4M, WIC4N, WIC4O, WIC4P, WIC4Q, WIC4R, WIC4S, WIC4T, WIC4U, WIC4V, WIC4W, WIC4X, WIC4Y, WIC4Z
STATION C239 (BL 107'-0" AZIM-135°)	RM 5125J PI 5125J PCI 5125J	PC1 5125J	WIC4A, WIC4B, WIC4C, WIC4D, WIC4E, WIC4F, WIC4G, WIC4H, WIC4I, WIC4J, WIC4K, WIC4L, WIC4M, WIC4N, WIC4O, WIC4P, WIC4Q, WIC4R, WIC4S, WIC4T, WIC4U, WIC4V, WIC4W, WIC4X, WIC4Y, WIC4Z
STATION C240 (BL 107'-0" AZIM-256°)	RM 5125K PI 5125K PCI 5125K	PC1 5125K	WIC4A, WIC4B, WIC4C, WIC4D, WIC4E, WIC4F, WIC4G, WIC4H, WIC4I, WIC4J, WIC4K, WIC4L, WIC4M, WIC4N, WIC4O, WIC4P, WIC4Q, WIC4R, WIC4S, WIC4T, WIC4U, WIC4V, WIC4W, WIC4X, WIC4Y, WIC4Z
STATION C241 (BL 107'-0" AZIM-30°)	RM 5125L PI 5125L PCI 5125L	PC1 5125L	WIC4A, WIC4B, WIC4C, WIC4D, WIC4E, WIC4F, WIC4G, WIC4H, WIC4I, WIC4J, WIC4K, WIC4L, WIC4M, WIC4N, WIC4O, WIC4P, WIC4Q, WIC4R, WIC4S, WIC4T, WIC4U, WIC4V, WIC4W, WIC4X, WIC4Y, WIC4Z
STATION C242 (BL 107'-0" AZIM-107°)	RM 5125M PI 5125M PCI 5125M	PC1 5125M	WIC4A, WIC4B, WIC4C, WIC4D, WIC4E, WIC4F, WIC4G, WIC4H, WIC4I, WIC4J, WIC4K, WIC4L, WIC4M, WIC4N, WIC4O, WIC4P, WIC4Q, WIC4R, WIC4S, WIC4T, WIC4U, WIC4V, WIC4W, WIC4X, WIC4Y, WIC4Z
STATION C243 (BL 107'-0" AZIM-132°)	RM 5125N PI 5125N PCI 5125N	PC1 5125N	WIC4A, WIC4B, WIC4C, WIC4D, WIC4E, WIC4F, WIC4G, WIC4H, WIC4I, WIC4J, WIC4K, WIC4L, WIC4M, WIC4N, WIC4O, WIC4P, WIC4Q, WIC4R, WIC4S, WIC4T, WIC4U, WIC4V, WIC4W, WIC4X, WIC4Y, WIC4Z

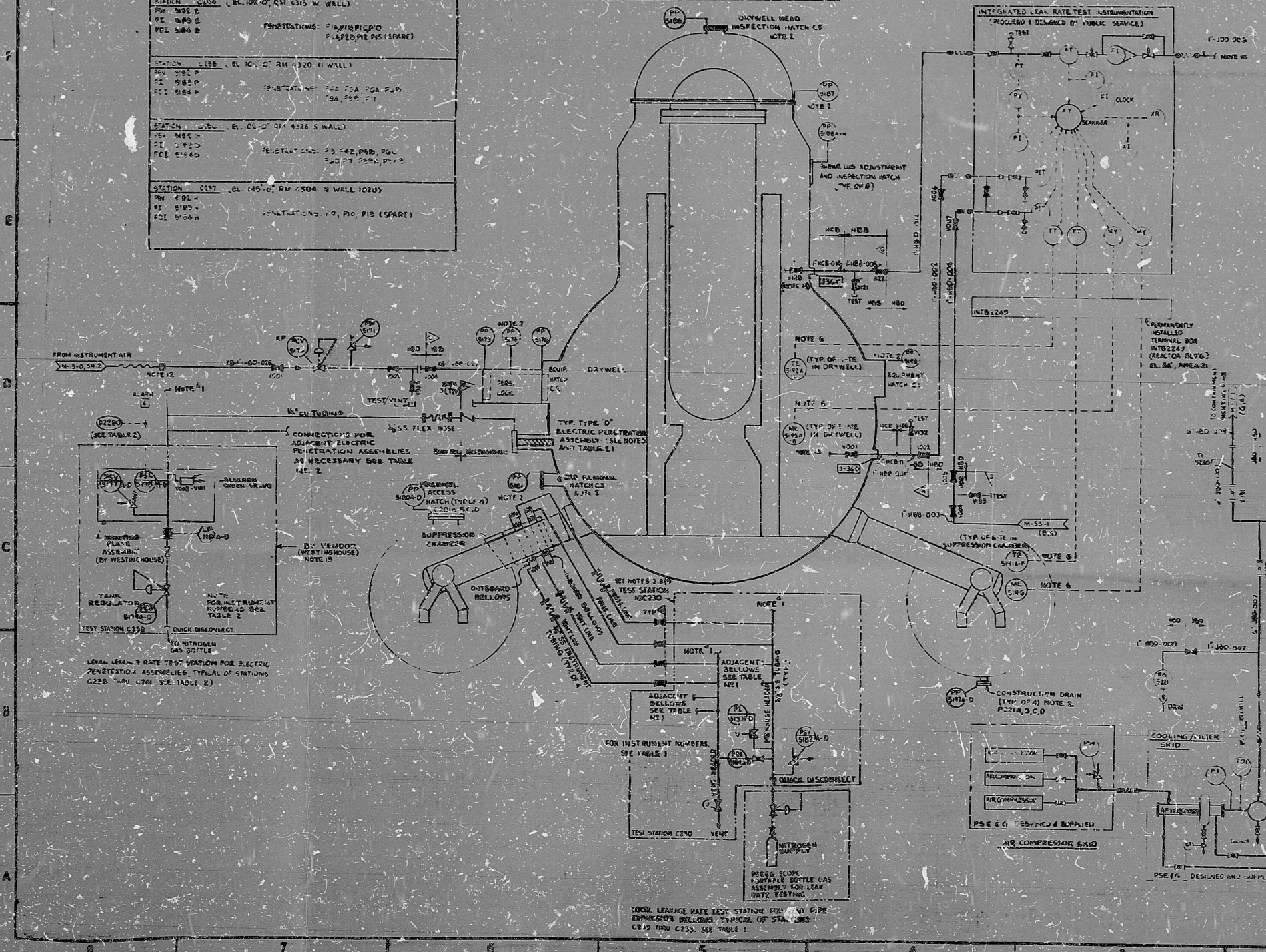


**SYSTEM GP**

NO.	REFERENCE DRAWING	DATE	BY
1	CONCRETE FOUNDATION, REACTOR BLDG.	1-15-76	WMS
2	CONCRETE FOUNDATION, REACTOR BLDG.	1-15-76	WMS
3	BLDG. PENETRATION ASSEMBLY	1-15-76	WMS
4	LOCAL LEAKAGE RATE TEST STATIONS	1-15-76	WMS
5	DETAILS	1-15-76	WMS

I, Robert M. Henderson, EIT being a registered professional engineer certify that these drawings were prepared by me or under my direct supervision and that I am a duly licensed professional engineer in the State of California, License No. 1174. My office is located at 1174 California Street, San Francisco, California 94109.

- NOTES:**
1. PRESSURE HEADERS ARE PROVIDED FOR EACH STATION AS NOTED. SEE TABLE NO. 1 AND NO. 2.
  2. ALL PRESSURE TEST CONNECTIONS (PT) ARE FOR TESTING ONLY. DO NOT USE FOR SERVICE.
  3. THE VALVE CLOSEST TO EACH PENETRATION OR TESTED COMPONENT (MATCH TO BELLOWS) IS THE O BOUNDARY.
  4. SEE CIVIL DRAWINGS C-0923-0101 AND C-0931-0101 FOR IDENTIFICATION OF THE PENETRATIONS.
  5. A PRESSURE INDICATOR, NOT SHOWN, AND ISOLATING VALVE IS SUPPLIED WITH EACH ELECTRIC PENETRATION ASSEMBLY. SEE REFERENCE DRAWING FOR DETAILS.
  6. PERMANENTLY INSTALLED INDIVIDUAL TERMINAL BOXES INSIDE PRIMARY CONTAINMENT. CONNECTIONS ARE PROVIDED FOR PENETRATIONS AND THE PRESSURE. THESE INSTRUMENTS WILL BE SUPPLIED BY PSEAC.
  7. ALL TUBING DESIGNATIONS PER DRAWING NO. 10853-00101 (EXCEPT SERVICE AIR WHICH IS PER TUBE CLASS SHEETS, DRAWING NO. 10853-00101).
  8. 2-1/2" ISOLATION VALVE SHALL BE ACCESSIBLE.
  9. TYPICAL PENETRATION DETAILS FOR 3" THROUGH BELLOWS. SEE TYPICAL DETAILS FOR OTHER PIPE BELOW CONNECTIONS.
  10. UNLESS OTHERWISE NOTED, ALL METALS SUPPLIED SHALL BE 1" THICK.
  11. THIS PLAN CONTAINS SYSTEMS OR PORTIONS OF SYSTEMS:
    - OP - PRIMARY CONTAINMENT LEAKAGE RATE TESTING
    - ES - INSTRUMENT COMPRESSED AIR
  12. CONNECTION TO INSTRUMENT AIR SHALL BE INSTALLED AT FIELD.
  13. LIMIT LINES IN REGISTRATION 316 ARE TO EXTEND INTO THE JYWELL.
  14. VERIFICATION LEAK CONNECTS TO REVS (PAID R-16-1) IN ROOM 4315.
  15. THE TEST STATION IS FABRICATED BY THE E.I.D. ONLY. THE INSTRUMENTS ON THE TEST STATION ARE PURCHASED FROM WESTINGHOUSE, P.O. E-135.



**FOR INFORMATION ONLY**  
**TI APERTURE CARD**

NO.	REVISION	DATE	BY	DESCRIPTION
1	REVISED TO INCORPORATE P.E. 10853-00101	1-15-76	WMS	CONCRETE FOUNDATION, REACTOR BLDG.
2	REVISED TO INCORPORATE P.E. 10853-00101	1-15-76	WMS	CONCRETE FOUNDATION, REACTOR BLDG.
3	REVISED TO INCORPORATE P.E. 10853-00101	1-15-76	WMS	CONCRETE FOUNDATION, REACTOR BLDG.
4	REVISED TO INCORPORATE P.E. 10853-00101	1-15-76	WMS	CONCRETE FOUNDATION, REACTOR BLDG.
5	REVISED TO INCORPORATE P.E. 10853-00101	1-15-76	WMS	CONCRETE FOUNDATION, REACTOR BLDG.
6	REVISED TO INCORPORATE P.E. 10853-00101	1-15-76	WMS	CONCRETE FOUNDATION, REACTOR BLDG.
7	REVISED TO INCORPORATE P.E. 10853-00101	1-15-76	WMS	CONCRETE FOUNDATION, REACTOR BLDG.
8	REVISED TO INCORPORATE P.E. 10853-00101	1-15-76	WMS	CONCRETE FOUNDATION, REACTOR BLDG.
9	REVISED TO INCORPORATE P.E. 10853-00101	1-15-76	WMS	CONCRETE FOUNDATION, REACTOR BLDG.
10	REVISED TO INCORPORATE P.E. 10853-00101	1-15-76	WMS	CONCRETE FOUNDATION, REACTOR BLDG.

**REVISIONS**  
R. O'LEARY (P.E.)  
SAN FRANCISCO

**DESIGNED AND SUPPLIED**  
PUBLIC SERVICE ENTERPRISE GROUP  
HOPE CREEK GENERATING STATION

**E.I.D.**  
PRIMARY CONTAINMENT  
LEAKAGE RATE TESTING

NO.	DATE	BY
1	1-15-76	WMS
2	1-15-76	WMS
3	1-15-76	WMS
4	1-15-76	WMS
5	1-15-76	WMS
6	1-15-76	WMS
7	1-15-76	WMS
8	1-15-76	WMS
9	1-15-76	WMS
10	1-15-76	WMS

**3.0 X 1**



8409190192

PDR RIDS

