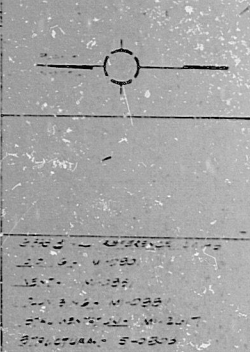


PLAN AT EL. 838'-9" & 841'-0"



GENERAL NOTES

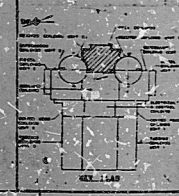
1. ALL ARCHITECTURAL ITEMS SHALL BE INSTALLED IN ACCORDANCE WITH THE LATEST EDITIONS OF THE FOLLOWING CODES AND STANDARDS:  
 1. BUILDING CODE  
 2. NATIONAL FIRE PROTECTION ASSOCIATION (NFPA) 101  
 3. PROTECTIVE PAINT COATING

- LEGEND**
- 1 HOUR FIRE FLOOR
  - 3 HOUR FIRE WALL
  - 3 HOUR FIRE FLOOR
  - 2 HOUR FIRE WALL
  - 1 HOUR FIRE CRECK WALL

- EXTERIOR WALL FIRE AREA BOUNDARY
  - FIRE AREA DESIGNATION
  - FIRE DOOR LABEL RATING
  - HOSE STATION
  - IONIZATION DETECTOR
  - FR: EXTINGUISHER
  - THERMAL DETECTOR
  - THERMISTOR STRIP DETECTOR
  - FLAME DETECTOR
  - SPRINKLER SYSTEM
  - DELUGE SYSTEM
  - HALON SYSTEM
  - CABLE TRAY
  - STRINNERS
- NOTE: FOR COMPLETE LEGEND SEE DRAWING FHA-22

**RATING NOTE**  
 FIRE RATINGS PROVIDED FOR NON-SAFETY-RELATED CONSIDERATIONS. NOT REQUIRED FOR SAFE SHUTDOWN.

TI  
 APERTURE  
 CARE



REV.	DATE	BY	APP'D.	REMARKS

THIS DRAWING IS THE PROPERTY OF TEXAS UTILITIES GENERATING CO. IT IS TO BE USED ONLY FOR THE PROJECT AND SITE SPECIFICALLY IDENTIFIED HEREON. IT IS NOT TO BE REPRODUCED, COPIED, OR TRANSMITTED IN ANY FORM OR BY ANY MEANS, ELECTRONIC OR MECHANICAL, INCLUDING PHOTOCOPYING, RECORDING, OR BY ANY INFORMATION STORAGE AND RETRIEVAL SYSTEM, WITHOUT THE WRITTEN PERMISSION OF TEXAS UTILITIES GENERATING CO.

TEXAS UTILITIES GENERATING CO.  
 FIRE HAZARD ANALYSIS  
 FUEL BUILDING FLOOR PLAN  
 O.E.L. 838'-9" & 841'-0"  
 SHEET NO. FHA-22

8408300324

PDR RDS

