

PLAN AT EL. 320.0'  
SCALE: 1/4" = 1'-0"

SECTION AA

SECTION BB

NOTE 1	FINISH IN 20.35	EL. V. 718'-0" 718'-0" 718'-0" 718'-0" 718'-0" 718'-0" 718'-0" 718'-0"
NOTE 2	FINISH IN 12.25	EL. V. 718'-0" 718'-0" 718'-0" 718'-0" 718'-0" 718'-0" 718'-0" 718'-0"
NOTE 3	FINISH IN 10.35	ELEV. 718'-0" 718'-0" 718'-0" 718'-0" 718'-0" 718'-0" 718'-0" 718'-0"
NOTE 4	FINISH IN 20.35	ELEV. 830'-0" 830'-0" 830'-0" 830'-0" 830'-0" 830'-0" 830'-0" 830'-0"

GENERAL NOTE  
ALL DIMENSIONS LOCATION DIMENSIONS  
SHOWN UNLESS OTHERWISE NOTED  
NOT TO BE USED FOR INSTALLATION

CROSS & HILL  
REFERENCE DRAWINGS

- STRUCTURAL - 10/27/54
  - Mechanical - 10/27/54
  - Electrical - 10/27/54
- THIS DRAWING SHOWS THE APPROXIMATE LOCATIONS AND NUMBER OF DETECTOR HEADS. FOR DETAILS SEE ELECTRICAL DRAWING ME322-EI-2014.

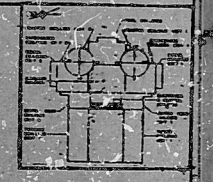
NOTE:  
DETECTORS LOCATED IN THE  
FLOOR SLABS ARE SHOWN ON  
DWG. ME322-EI-2014

- LEGEND
- 3 HOUR FIRE WALL
  - 2 HOUR FIRE WALL
  - 1 HOUR FIRE WALL
  - 1 HOUR FIRE BREAK WALL

- EXTENSIVE AREA SCHEMATIC
- FIRE ALARM CONTROL
- FIRE ALARM CONTROL
- SMOKE DETECTOR
- FLAME DETECTOR
- TEMPERATURE DETECTOR
- IONIZATION SMOKE DETECTOR
- FLAME DETECTOR
- SMOKE DETECTOR
- FLAME DETECTOR
- SMOKE DETECTOR
- FLAME DETECTOR
- SMOKE DETECTOR
- FLAME DETECTOR

RATING NOTE: FIRE RATINGS PROVIDED FOR NON-SAFETY RATED  
CONDUITS ARE NOT REQUIRED FOR SAFE  
SHUTOFFS

APERTURE CARD



NO.	REV.	DATE	BY	APP.	DESCRIPTION
1					ISSUED FOR CONSTRUCTION

TEXAS UTILITIES  
GENERATING CO.  
FIRE HAZARD ANALYSIS  
ELEC. & CONTROL BLDG.  
PLANS & DETAILS  
PLAN: FHA-20  
CP-11

8408300318

PDR RIDS

