

PART PLAN AT EL 866'-6"

NOTE:
ATMOSPHERIC CLEANUP UNITS
EVEN NUMBERS ON 873'-0"
ODD NUMBERS ON 866'-6"

PLAN AT EL 873'-0"

PART PLAN AT EL 847'-0"

GENERAL NOTES

1. ALL EQUIPMENT LOCATION SHALL BE AS SHOWN ON THIS DRAWING.
2. ALL ELECTRICAL WORK SHALL BE IN ACCORDANCE WITH THE NATIONAL ELECTRICAL CODE (NEC) AND THE TEXAS ELECTRICAL CODE (TEC).
3. ALL ELECTRICAL WORK SHALL BE IN ACCORDANCE WITH THE NATIONAL FIRE ALARMS ASSOCIATION (NFPA) STANDARDS.
4. ALL ELECTRICAL WORK SHALL BE IN ACCORDANCE WITH THE NATIONAL FIRE PROTECTION ASSOCIATION (NFPA) STANDARDS.
5. ALL ELECTRICAL WORK SHALL BE IN ACCORDANCE WITH THE NATIONAL FIRE PROTECTION ASSOCIATION (NFPA) STANDARDS.

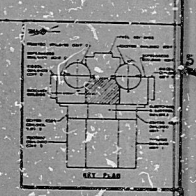
REVISIONS

NO.	DATE	DESCRIPTION
1	10/27/80	ISSUED FOR PERMIT
2	11/13/80	REVISED TO SHOW PERMIT CONDITIONS
3	11/13/80	REVISED TO SHOW PERMIT CONDITIONS
4	11/13/80	REVISED TO SHOW PERMIT CONDITIONS
5	11/13/80	REVISED TO SHOW PERMIT CONDITIONS

LEGEND

- 3 HOUR FIRE WALL
- 3 HOUR FIRE FLOOR
- 2 HOUR FIRE WALL
- 1 HOUR FIRE BREAK WALL
- WALL PENETRATION
- EXTERIOR WALL, FIRE AREA BOUNDARY
- FIRE AREA DECAUTION
- FIRE DOOR LABEL RATING
- HOSE STATION
- UNDERMATH AND CANZ FIRE EXTINGUISHER
- FIRE EXTINGUISHER
- IONIZATION DETECTOR
- THERMAL DETECTOR
- THEMISTOR STRIP DETECTOR
- FLAME DETECTOR
- SIGNAL SYSTEM
- DELAY SYSTEM
- VALVE SYSTEM
- CABLE TRAY
- SPRINKLERS

TI APERTURE CARD



NO.	DATE	DESCRIPTION
1	10/27/80	ISSUED FOR PERMIT
2	11/13/80	REVISED TO SHOW PERMIT CONDITIONS
3	11/13/80	REVISED TO SHOW PERMIT CONDITIONS
4	11/13/80	REVISED TO SHOW PERMIT CONDITIONS
5	11/13/80	REVISED TO SHOW PERMIT CONDITIONS

TEXAS UTILITIES GENERATING CO.
FIRE HAZARD ANALYSIS
AUXILIARY BLDG
PART PLANS C
EL 842'-0" / 873'-6" / 866'-6"
FHA-18

8408300314

PDR RIDS

