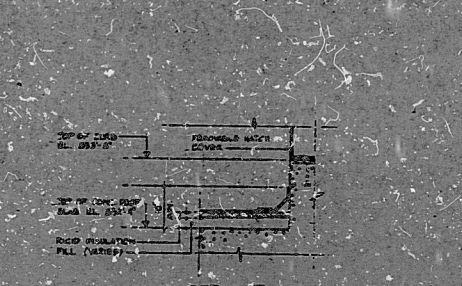
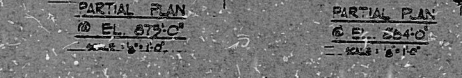
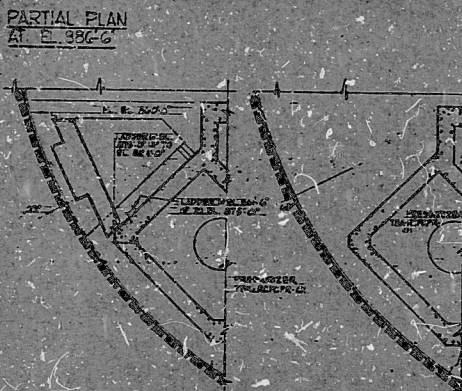
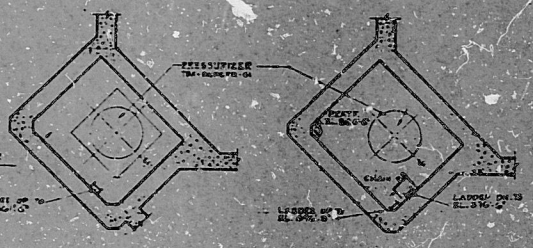
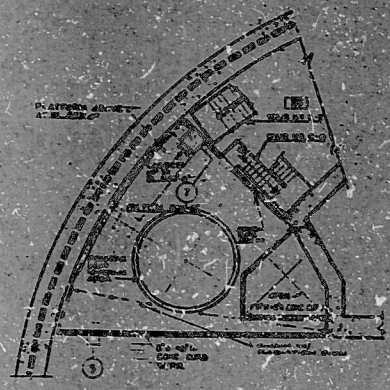


CA NOTE Z	FHA-1-6, 36	EL. 781'-7", 808'-6", 832'-6", 847'-0", 873'-0", 905'-9"
SK NOTE K	FHA-4-5, 36	EL. 852'-6", 873'-6", 880'-6"
SO NOTE C	FHA-1-6	EL. 773'-0", 783'-6", 790'-6", 800'-6", 810'-6", 831'-6", 852'-6", 873'-6", 896'-4"
SM NOTE M	FHA-2-4	EL. 810'-6", 832'-6", 852'-6"
SE NOTE E	FHA-3-4, 6	EL. 842'-6", 852'-6"
SN NOTE N	FHA-4-5	EL. 852'-6", 873'-6", 880'-6"



ROOF DETAIL

BREAK NOTE: FIRE BREAK PROVIDED FOR SEPARATION OF SAFE SHUTDOWN COMPONENTS.

ROOF WALL NOTE: WALL IS 3 HR RATED UP TO 3'-0" ABOVE ROOF ELEV. RATED AS EXTERIOR WALL ABOVE PER NFPA FIRE PROTECTION HANDBOOK, 14TH ED.

GENERAL NOTES:

- ALL EQUIPMENT LOCATION DIMENSIONS SHOWN ON THIS DRAWING SHALL NOT BE USED FOR INSTALLATION.
- FOR INDICATION OF CENTERLINE & DEPTH OF GRATING, SEE STRUCTURAL DRAWINGS.
- FOR ALL PENETRATIONS IN GRATING & FLOOR SLABS, SEE MECH. SECT. ELECTR. DRAWINGS.
- FOR EXCP DETAILS NOT INDICATED ON THIS DRAWING, SEE EXCP PLAN & DETAIL DRAWING 2315-AI-0006.

REFERENCE TO OTHER DRAWINGS

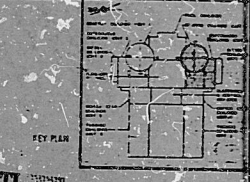
NO.	DESCRIPTION
1	MECH. SECT. 2315-AI-0006
2	ELECTR. SECT. 2315-AI-0007
3	MECH. SECT. 2315-AI-0008
4	ELECTR. SECT. 2315-AI-0009
5	MECH. SECT. 2315-AI-0010
6	ELECTR. SECT. 2315-AI-0011
7	MECH. SECT. 2315-AI-0012
8	ELECTR. SECT. 2315-AI-0013
9	MECH. SECT. 2315-AI-0014
10	ELECTR. SECT. 2315-AI-0015

GENERAL NOTES:

THE DRAWING SHOWS THE APPROXIMATE LOCATIONS AND NUMBER OF DETECTOR HEADS. FOR DETAILS SEE ELECTRICAL DRAWING NE 2315-EI-0023 & CONTROL DRAWING 2315-01-01.

LEGEND

- 3 HOUR FIRE WALL
 - 3 HOUR FIRE FLOOR
 - 2 HOUR FIRE WALL
 - 1 HOUR FIRE BREAK WALL
 - WALL PENETRATION
 - EXTERIOR WALL FIRE AREA BOUNDARY
 - FIRE AREA DESIGNATION
 - 3 HOUR FIRE BREAK WALL
- NOTE: FOR COMPLETE LEGEND SEE PHAS-1.



NON-NUCLEAR SAFETY
GA PROGRAM APPLICABLE
CLASS-B SECOND CATEGORY II
FIRE PROTECTION SYSTEM
RADIOACTIVE WASTE MANAGEMENT SYSTEM

**TEXAS UTILITIES
GENERATING CO**
FIRE PROTECTION SYSTEM
CONTAINMENT BARRIER
ELECTRICAL SECT. 2315-AI-0007
EL. 852'-6" & 873'-6"

NO.	DATE	BY	APP'D	REVISIONS
1	11/15/77	J. H. [unclear]	[unclear]	ISSUED FOR CONSTRUCTION
2	11/15/77	J. H. [unclear]	[unclear]	REVISED TO INCLUDE PORTING OF 6 IN. DIA. PIPES TO 4 IN. DIA. WALLS EXCEEDING FIRE AREA WALLS
3	11/15/77	J. H. [unclear]	[unclear]	REVISED TO INCLUDE PORTING OF 6 IN. DIA. PIPES TO 4 IN. DIA. WALLS EXCEEDING FIRE AREA WALLS
4	11/15/77	J. H. [unclear]	[unclear]	REVISED TO INCLUDE PORTING OF 6 IN. DIA. PIPES TO 4 IN. DIA. WALLS EXCEEDING FIRE AREA WALLS
5	11/15/77	J. H. [unclear]	[unclear]	REVISED TO INCLUDE PORTING OF 6 IN. DIA. PIPES TO 4 IN. DIA. WALLS EXCEEDING FIRE AREA WALLS

22
11
11
58
35
11
17
22

22
11
11
58
35
11
17
22

PDR RIDS

8408300285

