

SA	NOTE 1	SAFETY CAGE	SHOWN ON ELEV. 773'-0" 783'-0" 793'-0" 803'-0" 813'-0" 823'-0"
SB	NOTE 2	SAFE AREA	SHOWN ON ELEV. 773'-0" 783'-0" 793'-0" 803'-0" 813'-0" 823'-0"
SC	NOTE 3	SAFE AREA	SHOWN ON ELEV. 773'-0" 783'-0" 793'-0" 803'-0" 813'-0" 823'-0"
CA	NOTE 4	SAFE AREA	SHOWN ON ELEV. 773'-0" 783'-0" 793'-0" 803'-0" 813'-0" 823'-0"
SO	NOTE 5	SAFE AREA	SHOWN ON ELEV. 773'-0" 783'-0" 793'-0" 803'-0" 813'-0" 823'-0"

FIRE PROTECTION

ABBREVIATIONS:

- HPK HAND HELD POTASSIUM BASE DRY CHEMICAL (PURPLE K) EXTINGUISHER
- WPK WHEELED POTASSIUM BASE DRY CHEMICAL (PURPLE K) EXTINGUISHER
- MHP HAND HELD MULTI-PURPOSE DRY CHEMICAL EXTINGUISHER
- MHA HAND HELD HEALON (1211) EXTINGUISHER
- H2O PUMP TANK WATER EXTINGUISHER

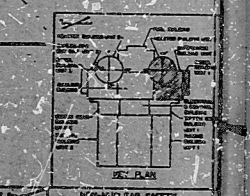
NOTE (CONT. BLDG. ONLY)
 DUE TO EXISTING CONDITIONS WITHIN THE SAFEGUARD BUILDING, THE LOCATION OF THE CONTAINMENT DURING REACTOR OPERATIONS WILL BE AS SHOWN ON THE DRAWING. STORAGE AREAS WILL BE AS SHOWN ON THE DRAWING. ACCESS TO THESE AREAS WILL BE AS SHOWN ON THE DRAWING. ACCESS TO THESE AREAS WILL BE AS SHOWN ON THE DRAWING. ACCESS TO THESE AREAS WILL BE AS SHOWN ON THE DRAWING. ACCESS TO THESE AREAS WILL BE AS SHOWN ON THE DRAWING.

GENERAL NOTES
 ALL EXPANSION JOINTS BRT. BLDG. AT FIRE FLOORS & WALLS PROVIDED WITH 3HR FIRE RATED SEAL.

LEGEND

- 3 HOUR FIRE WALL
- 2 HOUR FIRE WALL
- 1 HOUR FIRE BREAK WALL
- 3 HOUR FIRE BREAK WALL
- EXTERIOR WALL FIRE AREA BOUNDARY
- FIRE AREA DESIGNATION
- FIRE DOOR LABEL RATING
- HOSE STATION
- UNHAZARDOUS KNEZ FIRE DETECTOR
- SMOKE DETECTOR
- TEMPERATURE DETECTOR
- THERMAL DETECTOR
- FLAME DETECTOR
- SPRINKLER SYSTEM
- DELUGE SYSTEM
- HALON SYSTEM
- CABLE TRAY
- FLOOR PENETRATION
- WALL PENETRATION
- 2 HOUR FIRE FLOOR
- 1 HOUR FIRE FLOOR

TI APERTURE CARD



TEXAS UTILITIES GENERATING CO.
 FIRE HAZARD ANALYSIS CONTAINMENT SAFEGUARD BLDG. UNIT WITH PLANS ELEV. 773'-0" & 790'-6"
 FMA-1

AFAC

To be coded

8408300270

PDR RIDS

