

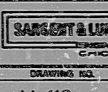
PRO APERTURE CARD

- NOTES:
1. ALL PIPING SHOWN ON THIS DRAWING CATEGORY II D
 2. SEE DRAWING M-61 FOR EQUIPMENT DRAINS.
 3. ALL PIPING SHOWN ON THIS DRAWING IS PER PIPING DESIGN TABLE 103 BB UNLESS OTHERWISE INDICATED.

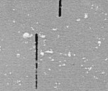


DRAWING RELEASE RECORD					DRAWING RELEASE RECORD					SCALE		DESCRIPTION		DRAWING NO.	
REV	DATE	BY	APPROVED	PURPOSE	REV	DATE	BY	APPROVED	PURPOSE	NO.	NO.	NO.	NO.	NO.	NO.
										1:1	1:1	1:1	1:1	1:1	1:1
										43 91	43 91	43 91	43 91	43 91	43 91
										46 83	46 83	46 83	46 83	46 83	46 83
										40 69	40 69	40 69	40 69	40 69	40 69

DRAWING RELEASE RECORD					DRAWING RELEASE RECORD					SCALE		DESCRIPTION		DRAWING NO.	
REV	DATE	BY	APPROVED	PURPOSE	REV	DATE	BY	APPROVED	PURPOSE	NO.	NO.	NO.	NO.	NO.	NO.
										1:1	1:1	1:1	1:1	1:1	1:1
										43 91	43 91	43 91	43 91	43 91	43 91
										46 83	46 83	46 83	46 83	46 83	46 83
										40 69	40 69	40 69	40 69	40 69	40 69



- NOTES:
1. THIS UN-SHOWN TAG ATTACHED TO AN ENCLOSED AREA OF THIS DRAWING INDICATES A UNUSUAL FEATURE FOR MARBLE HILL, ILL. FOR.



- NOTES:
1. THIS UN-SHOWN TAG ATTACHED TO AN ENCLOSED AREA OF THIS DRAWING INDICATES A UNUSUAL FEATURE FOR MARBLE HILL, ILL. FOR.

8305110578

RID's

