

POOR ORIGINAL

TI APERTURE CARD

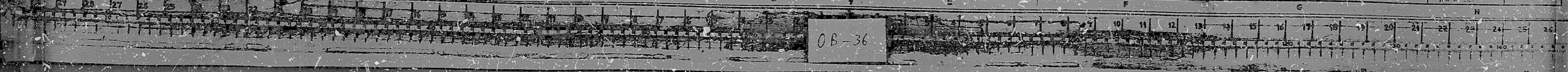
OPERATOR RESPONSIBILITY FOR FLOW DIAGRAMS AND TITERS TO THE APERTURE CARD FLOW DIAGRAMS AND TITERS TO ALL RATE INDICATING DEVICES CONCERNED BY APERTURE CARD

THIS FLOW DIAGRAM HAS BEEN REVISIONED FROM A PREVIOUS EDITION AND IS SUBJECT TO CHANGE WITHOUT NOTICE. THE CENTER COMPANY WILL BE RESPONSIBLE FOR THE ACCURACY OF THE CENTER COMPANY'S FLOW DIAGRAMS AND TITERS.

SUPERSEDED

TEXAS UTILITIES SERVICES INC.	
DALLAS POWER & LIGHT COMPANY	
FORT WORTH POWER & LIGHT COMPANY	
HOUSTON POWER & LIGHT COMPANY	
SAN ANTONIO POWER & LIGHT COMPANY	
WICHITA POWER & LIGHT COMPANY	
FLOW DIAGRAM	
CHEMICAL & VOLUME	
CONTROL SYSTEM (COMMON)	
DATE: 11/1/57	BY: [Signature]
PROJECT NO. 252	MI-0257

OB-36



11
98

8.5"

11"

17"

PDR RIDS

8405270332

