

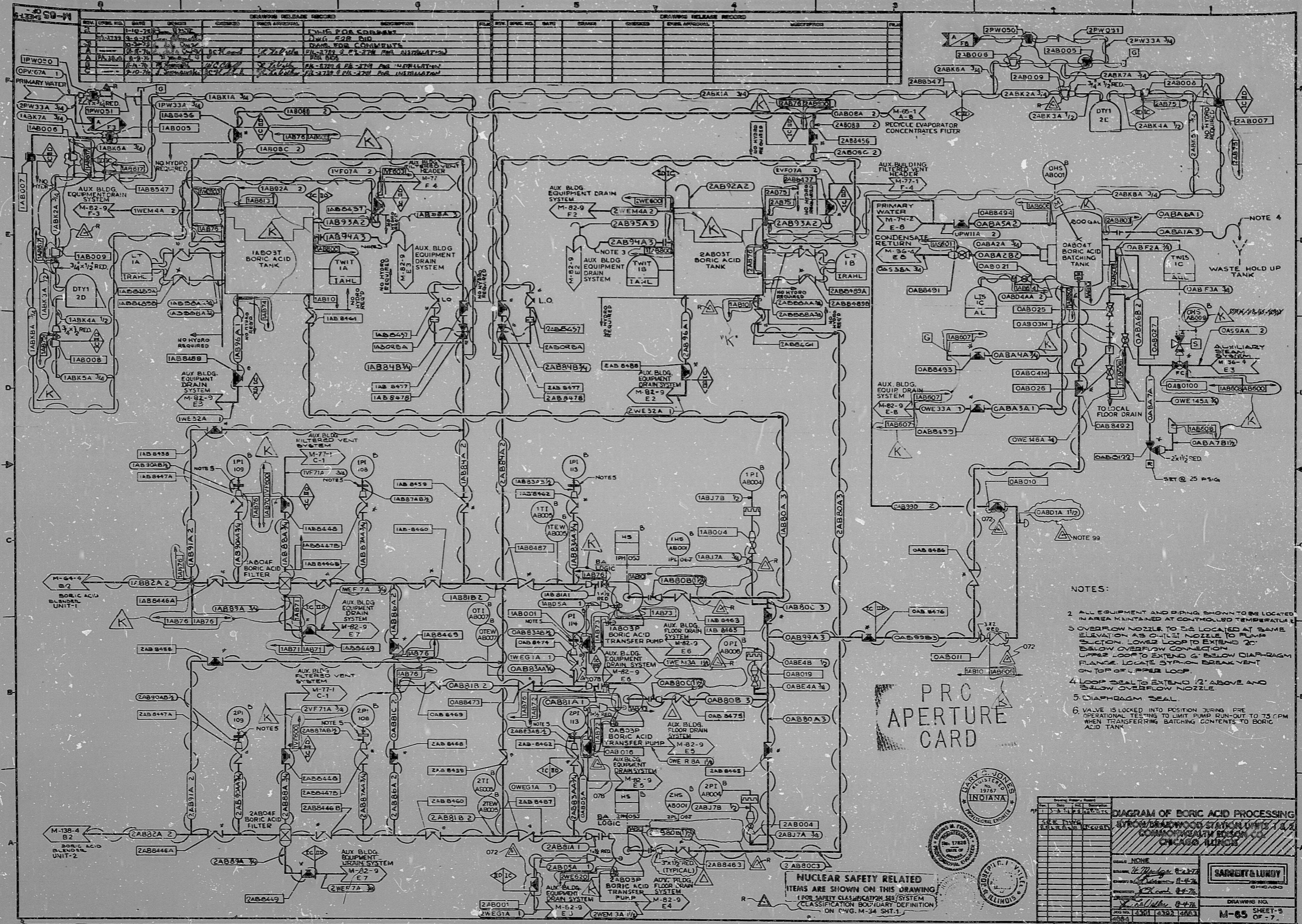
17

11
5.8

8.5

11

17



- NOTES:
2. ALL EQUIPMENT AND DRIVING SHOULD BE LOCKED IN AREA MAINTAINED AT CONTROLLED TEMPERATURE
 3. OVERFLOW NOZZLE TO BE LOCATED AT SAME ELEVATION AS OULET NOZZLE TO PUMP SECTION. LOWER LOOP TO EXTEND 2" BELOW OVERFLOW CONNECTION. UPPER LOOP TO EXTEND 6" BELOW DIAPHRAGM FLANGE. LOCATE SYSTEM DRAIN VENT ON TOP OF UPPER LOOP.
 4. LOOP SEAL TO EXTEND 1/2" ABOVE AND BELOW OVERFLOW NOZZLE
 5. DIAPHRAGM SEAL
 6. VALVE IS LOCKED INTO POSITION DURING PRE OPERATIONAL TESTING TO LIMIT PUMP RUNOUT TO 75 RPM WHEN TRANSFERRING BATCHING CONTENTS TO BORIC ACID TANK

PRO APERTURE CARD

NUCLEAR SAFETY RELATED ITEMS ARE SHOWN ON THIS DRAWING. (SEE SAFETY CLASSIFICATION SYSTEM CLASSIFICATION BOUNDARY DEFINITION ON C4G-M-34-SHT.1)



DATE	11-21-82
BY	...
CHECKED	...
APPROVED	...

DIAGRAM OF BORIC ACID PROCESSING

BYRON POWER STATION OFFS 1 & 2

CONTRACT NO. 100-82-001

REV. 100-82-001-001

DATE 11-21-82

DRAWING NO. M-85

SHEET 5 OF 7

REV.	DATE	RELD.	PREPARED	REVIEWED	APPROVED	PURPOSE
K	11-21-82					PREVIOUSLY RELEASED FOR FAB-Y-2962&CONSTRY-2730 IN CORP BYRON REV. 7-18-24-82 & REV 7A 07-27-82. ADD UNIQUE FEATURE---PER FORMAL ANALYSIS---FOR FAB & CONSTRUCT PER SPEC Y-278 FOR INFO Y-2702.

DATE	11-21-82
BY	...
CHECKED	...
APPROVED	...

DIAGRAM OF BORIC ACID PROCESSING

MARBLE HILL NUCLEAR GENERATING STA UNITS 1 & 2

PUBLIC SERVICE INDIANA PLAINFIELD, INDIANA

DRAWING NO. M-85

SHEET 5 OF 7

8305090635

RIDS

