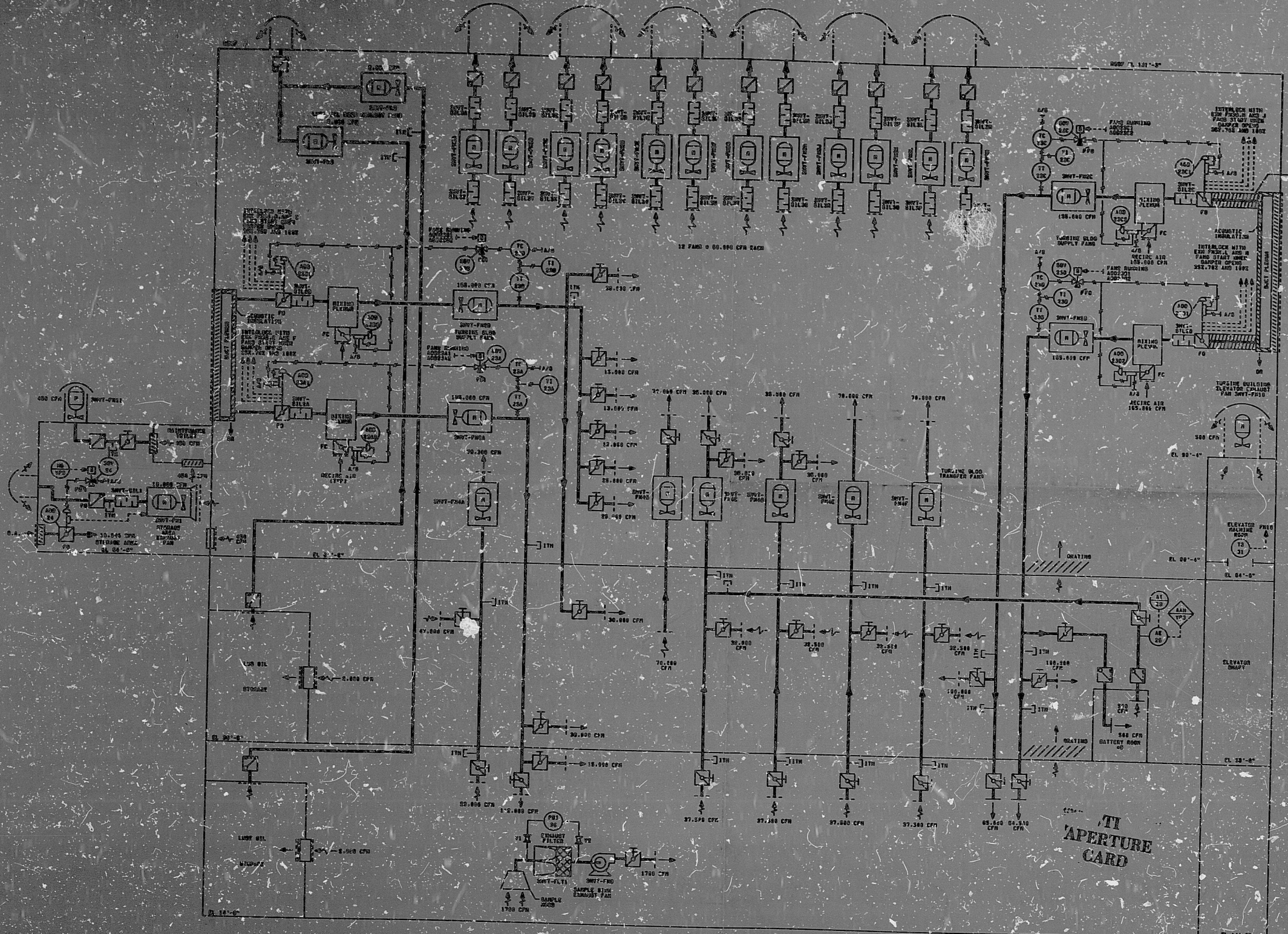


1-7001 (REV. 10-67)



- NOTES:
1. ALL INSTRUMENTATION AND EQUIPMENT REQUIRED FOR TURBINE PLANT VENTILATION TO BE PROVIDED WITH "SHUT-F" EXCEPT WHERE A DIFFERENT PREFIX IS SHOWN.
 2. CFM DENOTES INSTRUMENT TEST RATE.
 3. ALL INSTRUMENTATION AND EQUIPMENT PROVIDED FOR SPECIAL OPERATIONS SHALL BE IDENTIFIED BY A PREFIX OTHER THAN "SHUT-F" EXCEPT WHERE A DIFFERENT PREFIX IS SHOWN.
 4. ALL AIR INTAKE AND EXHAUST PLANS AND THE AIR FLOW RATE TO BE USED AS SHOWN.
 5. ALL INSTRUMENTATION AND EQUIPMENT PROVIDED FOR TURBINE PLANT VENTILATION TO BE PROVIDED WITH "SHUT-F" EXCEPT WHERE A DIFFERENT PREFIX IS SHOWN.
 6. FOR COLLING WATER TO SHUT-ACROSS, PREFIX IS SHOWN.
 7. ALL INSTRUMENTATION AND EQUIPMENT PROVIDED FOR TURBINE PLANT VENTILATION TO BE PROVIDED WITH "SHUT-F" EXCEPT WHERE A DIFFERENT PREFIX IS SHOWN.
 8. ALL INSTRUMENTATION AND EQUIPMENT PROVIDED FOR TURBINE PLANT VENTILATION TO BE PROVIDED WITH "SHUT-F" EXCEPT WHERE A DIFFERENT PREFIX IS SHOWN.
 9. ALL INSTRUMENTATION AND EQUIPMENT PROVIDED FOR TURBINE PLANT VENTILATION TO BE PROVIDED WITH "SHUT-F" EXCEPT WHERE A DIFFERENT PREFIX IS SHOWN.
 10. ALL INSTRUMENTATION AND EQUIPMENT PROVIDED FOR TURBINE PLANT VENTILATION TO BE PROVIDED WITH "SHUT-F" EXCEPT WHERE A DIFFERENT PREFIX IS SHOWN.

NOT TO BE USED FOR CONSTRUCTION

TI APERTURE CARD

NUCLEAR SAFETY RELATED
GA CAT. I, II, III

DATE	9-4-3	BY	1023
REVISION		BY	
APPROVED		BY	
CHECKED		BY	
DESIGNED		BY	
DRAWN		BY	
SCALE		DATE	
NORTH EAST NUCLEAR ENERGY COMPANY NORTH EAST UTILITIES HILLSTONE NUCLEAR POWER STATION-UNIT NO. 2 PIPING & INSTRUMENTATION DIAGRAM TURBINE PLANT VENTILATION SHEET NO. 1 OF 2 P. 1-100-100			
SAH DWG NO 12179-E-R-150A-1 DRAWN BY: S. H. HARRISON CHECKED BY: R. T. LEE			

THE INFORMATION ON THIS DRAWING MUST BE
COPIED ON SHUT-F SHEETS FROM THE CONSTRUCTION
DRAWINGS TO BE USED IN THE FIELD.

PDR RDS

8406020395

