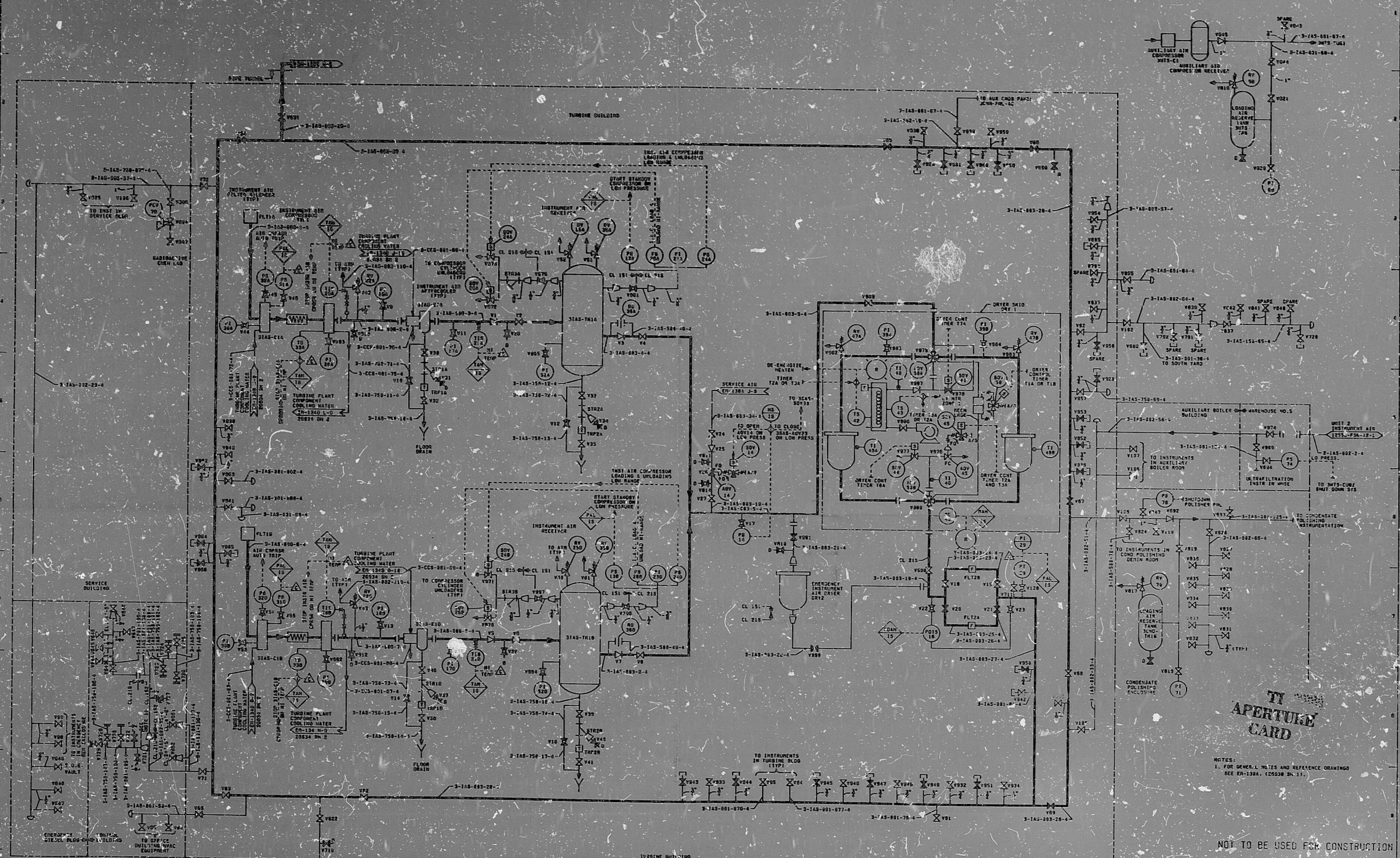


12179-E-M-1388-1



TY APERTURE CARD

NOTES:
1. FOR GENERAL NOTES AND REFERENCE DRAWINGS SEE EN-1304, 125038 IN 11.

NOT TO BE USED FOR CONSTRUCTION

NUCLEAR SAFETY RELATED
QA CAT. I, II, III

REV	DATE	DESCRIPTION	BY	CHKD

NORTHWEST NUCLEAR ENERGY COMPANY
 SUBSIDIARY OF
 NORTHWEST UTILITIES
 HILLSTONE NUCLEAR POWER STATION - UNIT NO. 3
 PIPING & INSTRUMENTATION DIAGRAM
 COMPRESSED AIR
 25212-26380 DN 2 & 3
 25212-26380 DN 2 & 3
 S&W ENGINEERING CORPORATION
 8001 N. 45TH ST.
 MILWAUKEE, WIS. 53212

S&W DWG NO 12179-E-M-1388-1
DRAWN BY: B.T. DOORAN CHECKED BY: R.T. LAW

THE INFORMATION ON THIS DRAWING MAY NOT BE COPIED, REPRODUCED, OR OTHERWISE TRANSMITTED IN ANY FORM OR BY ANY MEANS, ELECTRONIC OR MECHANICAL, INCLUDING PHOTOCOPYING, RECORDING, OR BY ANY INFORMATION STORAGE AND RETRIEVAL SYSTEM, WITHOUT THE WRITTEN PERMISSION OF THE ORIGINAL AUTHOR.

PDR RIDS

84060Z0327

