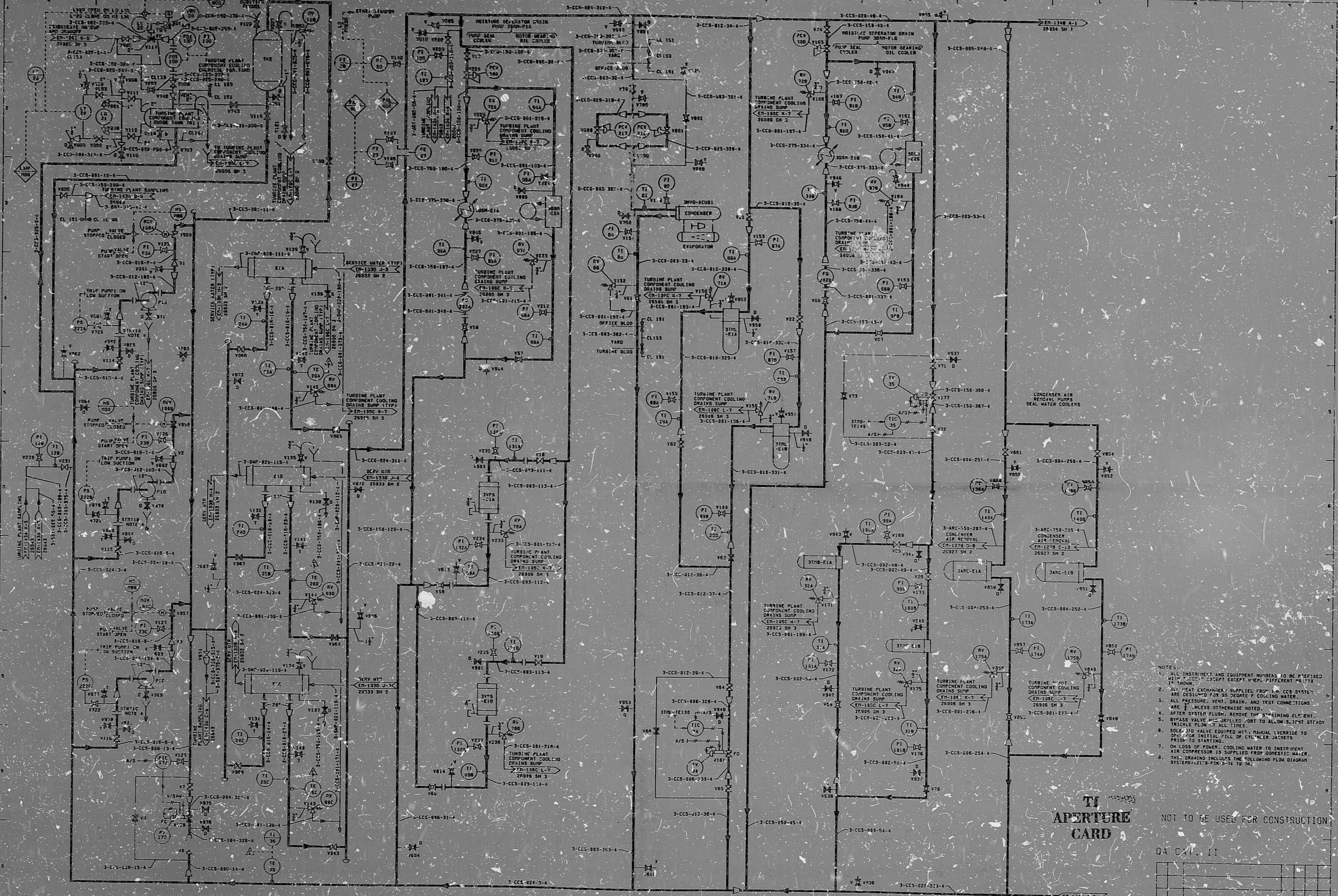


12179-EN-134A



- NOTES:
1. ALL INSTRUMENT AND EQUIPMENT NUMBERS TO BE REIFIED TO SHOWN.
 2. ALL HEAT EXCHANGERS SUPPLIED FROM THE CCS SYSTEM ARE DESIGNATED FOR THE PURPOSE OF COOLING WATER.
 3. ALL PRESSURE, VENT, DRAIN, AND TEST CONNECTIONS ARE TO BE MADE OTHERWISE NOTED.
 4. AFTER SYSTEM FLUSH, REMOVE THE STOPPING ELEMENT TRICKLE FLOW AT ALL TIES.
 5. BEFORE THE VALVE BEING OPERATED, MANUAL LOCK TO THE TRICKLE FLOW POSITION TO ALLOW SUFFICIENT TIME TO STARTING.
 6. ON LOSS OF POWER, COOLING WATER TO INSTRUMENT AIR COMPRESSOR IS SUPPLIED FROM DOMESTIC WATER.
 7. THIS DRAWING INCLUDES THE FOLLOWING PUMP DIAGRAM SYSTEMS: 12179-FSK-3-74 TO 36.

TI APERTURE CARD

NOT TO BE USED FOR CONSTRUCTION

QA CONTROL

REV.	DATE	DESCRIPTION	BY	CHK.	APP.

NORTHEAST NUCLEAR ENERGY COMPANY
SUBSIDIARY OF
NORTHEAST UTILITIES

TITLE: HILLSTONE NUCLEAR POWER STATION - UNIT NO. 3
PIPING & INSTRUMENTATION DIAGRAM
TURBINE PLANT COMPONENT COOLING SYSTEM

DATE: 12-22-62
SCALE: AS SHOWN
P.L. 471-155

STONE & WEBSTER ENGINEERING CORPORATION
201 N. 10th St.
P.O. Box 1000
Rochester, N.Y. 14603

9-2-10
102

THE INFORMATION ON THIS DRAWING MAY NOT BE COPIED OR USED FOR OTHER THAN THE CONTRACTOR'S USE WITHOUT THE WRITTEN PERMISSION OF THE PROJECT MANAGER.

SAW-DWG NO. 12179-EN-134A-1

PDR RIDS

840602035

