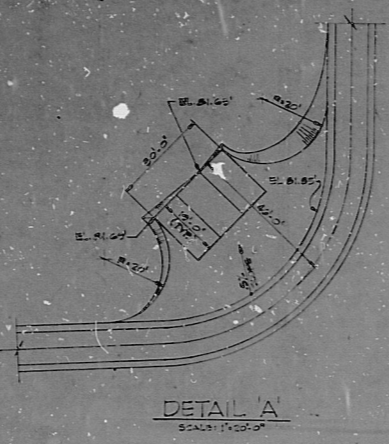
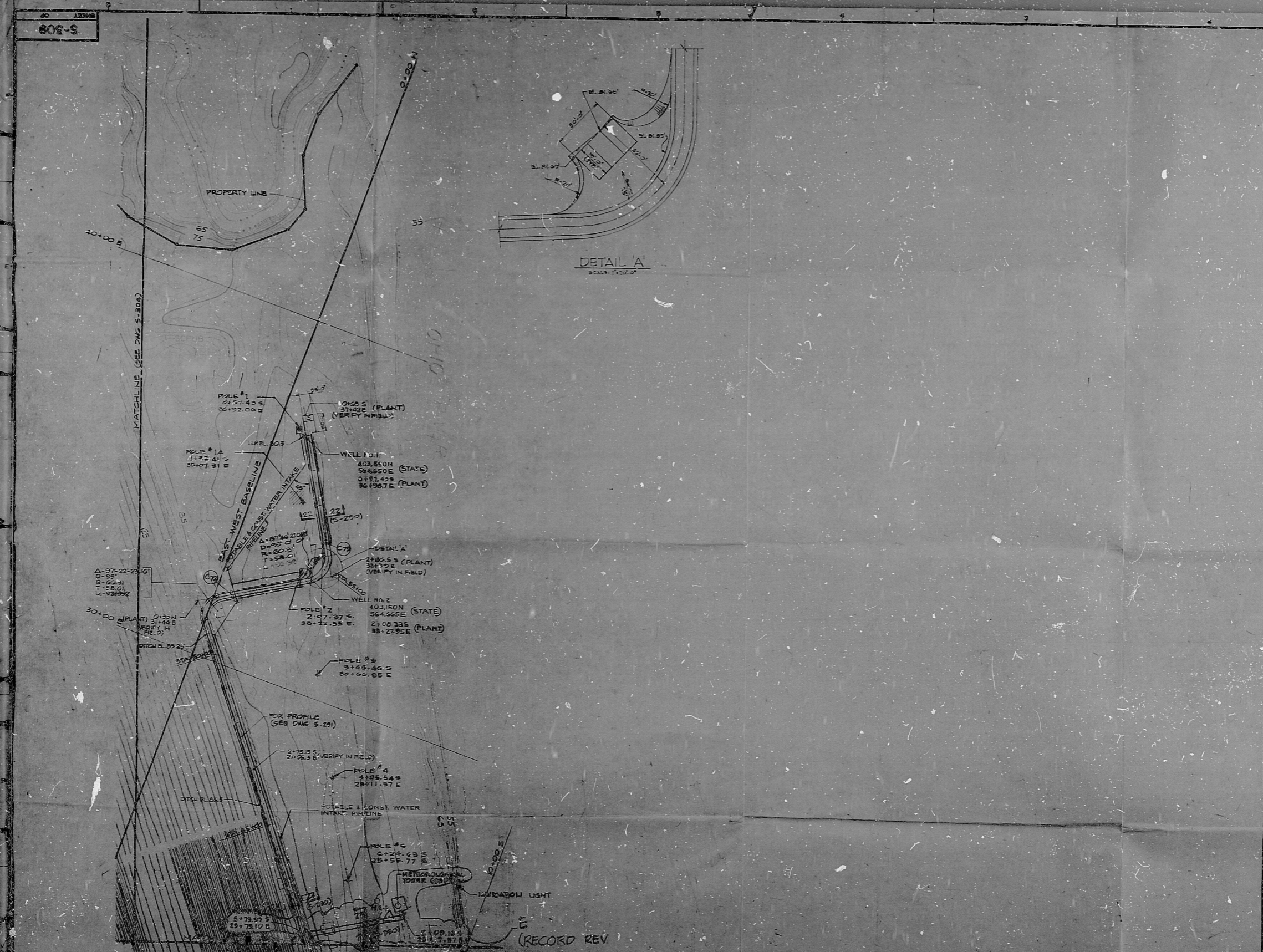


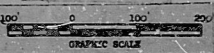
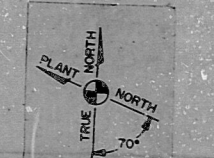
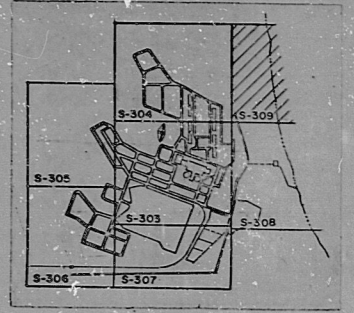
S-308

22"
11"
8.5"
11"
8.5"
11"
17"
22"

22"
11"
8.5"
11"
17"
22"



DESIGNED BY MULTIDISCIPLINARY SERVICES, INC.
 400 W. WABASH, CHICAGO, ILL. 60601
 PHONE: (312) 467-1000
 FAX: (312) 467-1001
 WWW: WWW.MDSI.COM



NOTES
 1. FOR GENERAL NOTES SEE DWG. S-301 & S-302.

REFERENCE DRAWINGS
 S-301 SITE PLAN, SHEET 1
 S-302 SITE PLAN, SHEET 2
 S-304 GRADING, ROADWORK & DRAINAGE - SHEET 2
 S-305 GRADING, ROADWORK & DRAINAGE - SHEET 3
 S-306 ROAD SECTION & DETAILS PLANT AREA SHEET

PRC
 APERTURE
 CARD

NO.	DATE	BY	CHECKED	REVISION
1	11-16-81	W. J. Smith	A. J. Smith	INITIAL DESIGN FOR RECORD
2	12-15-81	W. J. Smith	A. J. Smith	REVISION FOR RECORD

FOR CONCRETE STRUCTURE & SITEWORK BIDDING
 SEE SPECIFICATIONS & R.F.I.'S
 GENERAL REVISION
 REVISION NO. 11/16/81



DATE: 11-16-81
 TIME: 10:00 AM
 DRAWN BY: W. J. Smith
 CHECKED BY: A. J. Smith

GRADING, ROADWORK & DRAINAGE
 SHEET 7
 MARBLE HILL NUCLEAR GENERATING STATION
 UNIT 1 & 2
 PUBLIC SERVICE INDIANA
 PLAINFIELD, INDIANA

BARCLAY
 S-308
 E

8305040401

RIDS
RIDS

