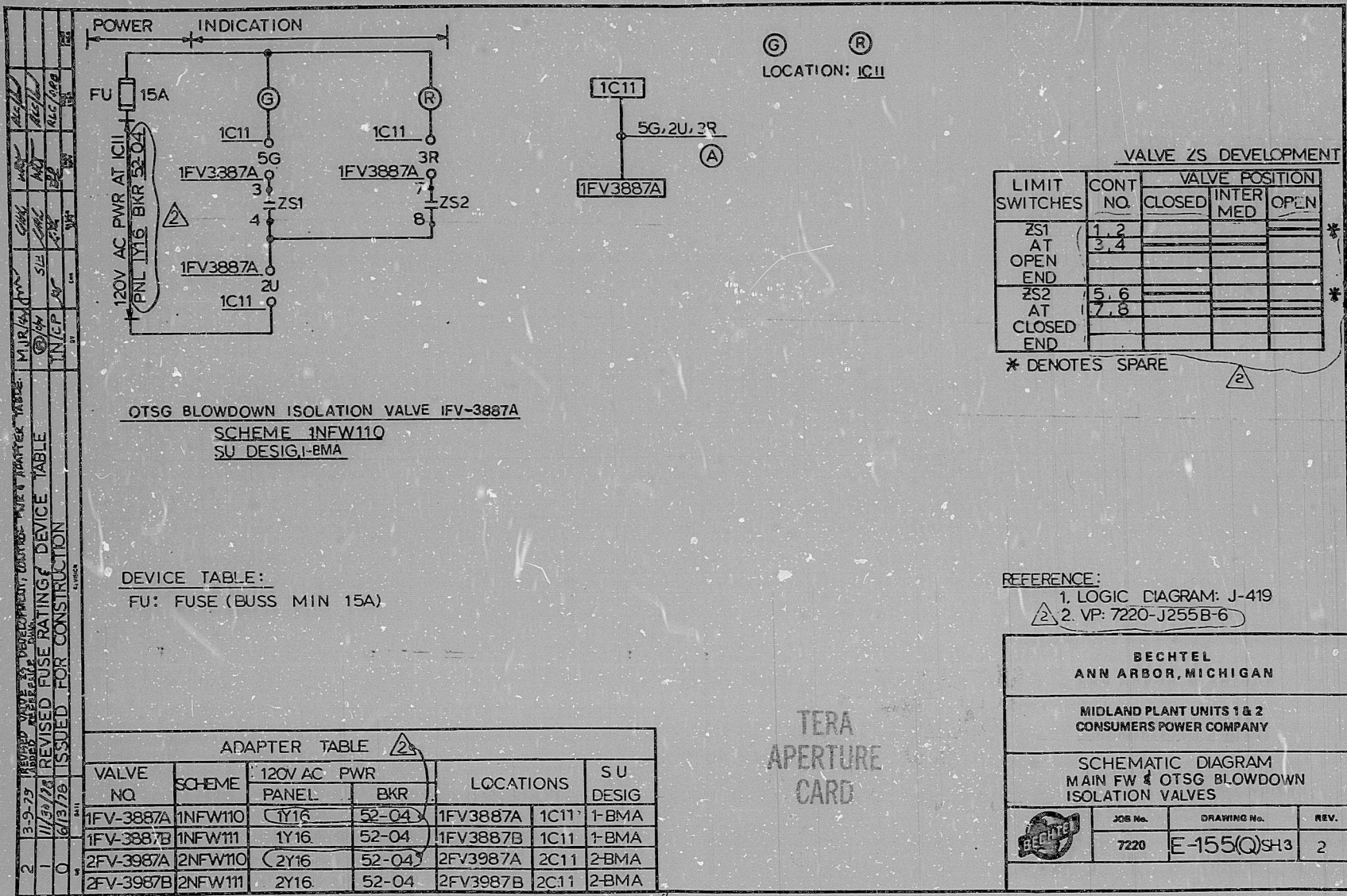


This drawing and the design it covers are the property of BECHTEL. They are hereby loaned and on the borrower's return accompanied by the borrower's signature and date. They are not to be reproduced, copied, loaned, exhibited, or used except in the limited way and for the limited purpose permitted by any written consent given by the lender to the borrower.



VALVE ZS DEVELOPMENT

LIMIT SWITCHES	CONT NO.	VALVE POSITION		
		CLOSED	INTER MED	OPEN
ZS1 AT OPEN END	1, 2 3, 4			*
ZS2 AT CLOSED END	5, 6 7, 8			*

* DENOTES SPARE

OTSG BLOWDOWN ISOLATION VALVE IFV-3887A
SCHEME 1NFW110
SU DESIG:1-BMA

DEVICE TABLE:
FU: FUSE (BUSS MIN 15A)

REFERENCE:
1. LOGIC DIAGRAM: J-419
2. VP: 7220-J255B-6

ADAPTER TABLE

VALVE NO	SCHEME	120V AC PWR		LOCATIONS	SU DESIG
		PANEL	BKR		
1FV-3887A	1NFW110	1Y16	52-04	1FV3887A 1C11	1-BMA
1FV-3887B	1NFW111	1Y16	52-04	1FV3887B 1C11	1-BMA
2FV-3987A	2NFW110	2Y16	52-04	2FV3987A 2C11	2-BMA
2FV-3987B	2NFW111	2Y16	52-04	2FV3987B 2C11	2-BMA

BECHTEL
ANN ARBOR, MICHIGAN

MIDLAND PLANT UNITS 1 & 2
CONSUMERS POWER COMPANY

SCHEMATIC DIAGRAM
MAIN FW & OTSG BLOWDOWN
ISOLATION VALVES

JOB No.	DRAWING No.	REV.
7220	E-155(Q)SH3	2

TERA
APERTURE
CARD

16X

I certify that the image contained on this frame was made in the normal and regular course of business, on the date stated below and that it is an accurate reproduction of the document submitted to reprographics.

8-14-81
DATE
Evelyn S. ...
OPERATOR
REPRODUCTION
0-1540

RIDS

811130087

