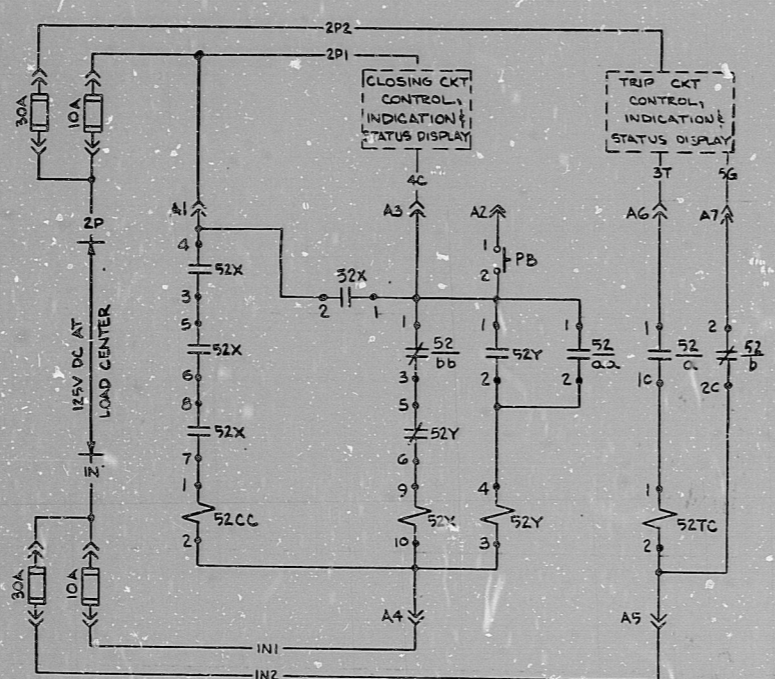


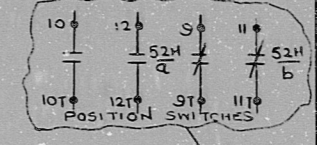
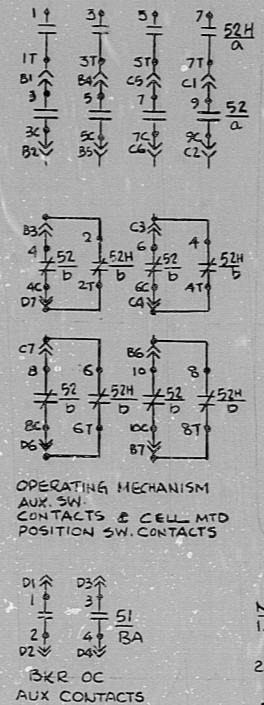
This drawing and the design it covers are the property of BECHTEL. They are hereby loaned and on the borrower's express agreement that they will not be reproduced, copied, exhibited, or used except in the limited way and private use permitted by any written consent given by the lender to the borrower.

REV	DATE	BY	CHKD	DESCRIPTION
1	12-4-75	WJL	WJL	ISSUED FOR CONSTRUCTION
2	7/27/77	WJL	WJL	REVISED & REISSUED FOR CONSTRUCTION

REFERENCES:  
V.P. EG-23-24



TYPICAL 480V BREAKER INTERNAL SCHEMATIC  
SOLENOID OPERATED-STORED ENERGY  
(600A)



- DEVICES
- 52 - AC CIRCUIT BREAKER
  - 52X - CONTROL RELAY
  - 52Y - CONTROL RELAY LOCKOUT (ANTI-PUMP RELAY)
  - 52CC - SOLENOID CLOSING COIL
  - 52TC - TRIP COIL
  - 52/aa - LIMIT SW CONTACTS, ACTUATED BY OPERATING MECHANISM
  - 52/bb - MECHANISM OPERATED AUX SW CONTACTS
  - 52/a - MECHANISM OPERATED AUX SW CONTACTS
  - 52H/a - CELL MOUNTED AUX SW ACTUATED BY THE POSITION OF THE REMOVABLE ELEMENT, DEVICE 52
  - 51 - BREAKER OVERCURRENT AUX CONTACT OPERATES ON AUTOMATIC BKR TRIP

- NOTES
- SCHEMATIC SHOWN FOR BKR IN WITHDRAWN POSITION & DE-ENERGIZED
  - ALL BREAKERS HAVE AN ELECTRICAL CLOSE P13 & A MECHANICAL TRIP PB AT THE LOAD CENTER.

BECHTEL ANN ARBOR, MICHIGAN		
MIDLAND PLANT UNITS 1 & 2 CONSUMERS POWER COMPANY		
SCHEMATIC DIAGRAM TYPICAL 480V CIRCUIT BREAKER INTERNAL SCHEMATIC		
JOB No.	DRAWING No.	REV.
7220	E-72 SH 2	2

TERA  
APERTURE  
CARD

RDS

811120893

