

22"

22"

17"

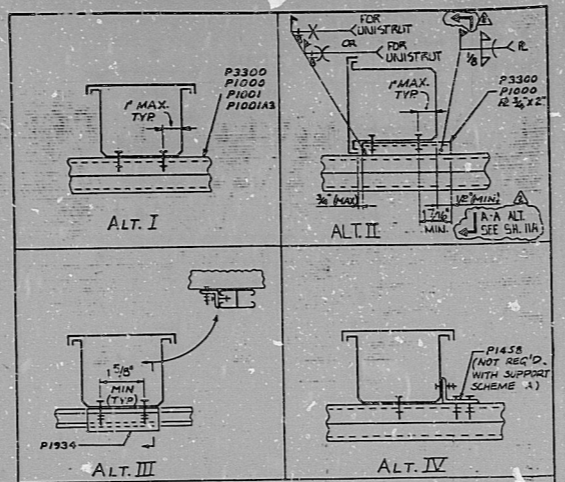
17"

11"

11"

5.8"

5.8"



TYPICAL CONNECTION OF CLASS IE WIREWAY TO SUPPORT

- NOTE:
1. ORIENTATION OF CONNECTIONS MAY BE ROTATED 180°
 2. CONNECTION SHALL BE FIELD DRILLED 3/8" Ø HOLES FOR 1/2" Ø UNIFRUIT BOLTS W/ P1010 NUTS
 3. CONNECTION ALTERNATE, MAY BE COMBINED TO PROVIDE ADD'L. ALT.

11/17/75	ADDED A-C ALT TO ALT II	SEC	424	REV	BY	AKL
10/24/75	REVISED DCU NRS 4, 5	DES	510	REV	BY	AKL
5/14/75	REVISED TO ACCOMMODATE 3"	DES	210	REV	BY	AKL
	REVISIONS	BY	CHKD	DATE	CHKD	DATE
	DESIGNED BY	MCNEEL	DRWN	D. JONES		
ORIGIN	MIDLAND PLANT UNITS 1 & 2	JOB No.	7220	DRWING No.		
	CONSUMERS POWER COMPANY					
	SEISMIC WIREWAY SUPPORTS					
	NOTES, SYMBOLS & DETAILS					

12RA
APERTURE
CARD

16X

I certify that the image contained on this frame was made in the normal and regular course of business, on the date stated below and that it is an accurate reproduction of the document submitted to reprographics.

8.5"

8.5"

11"

11"

17"

17"

22"

22"

RIDS

811120880

