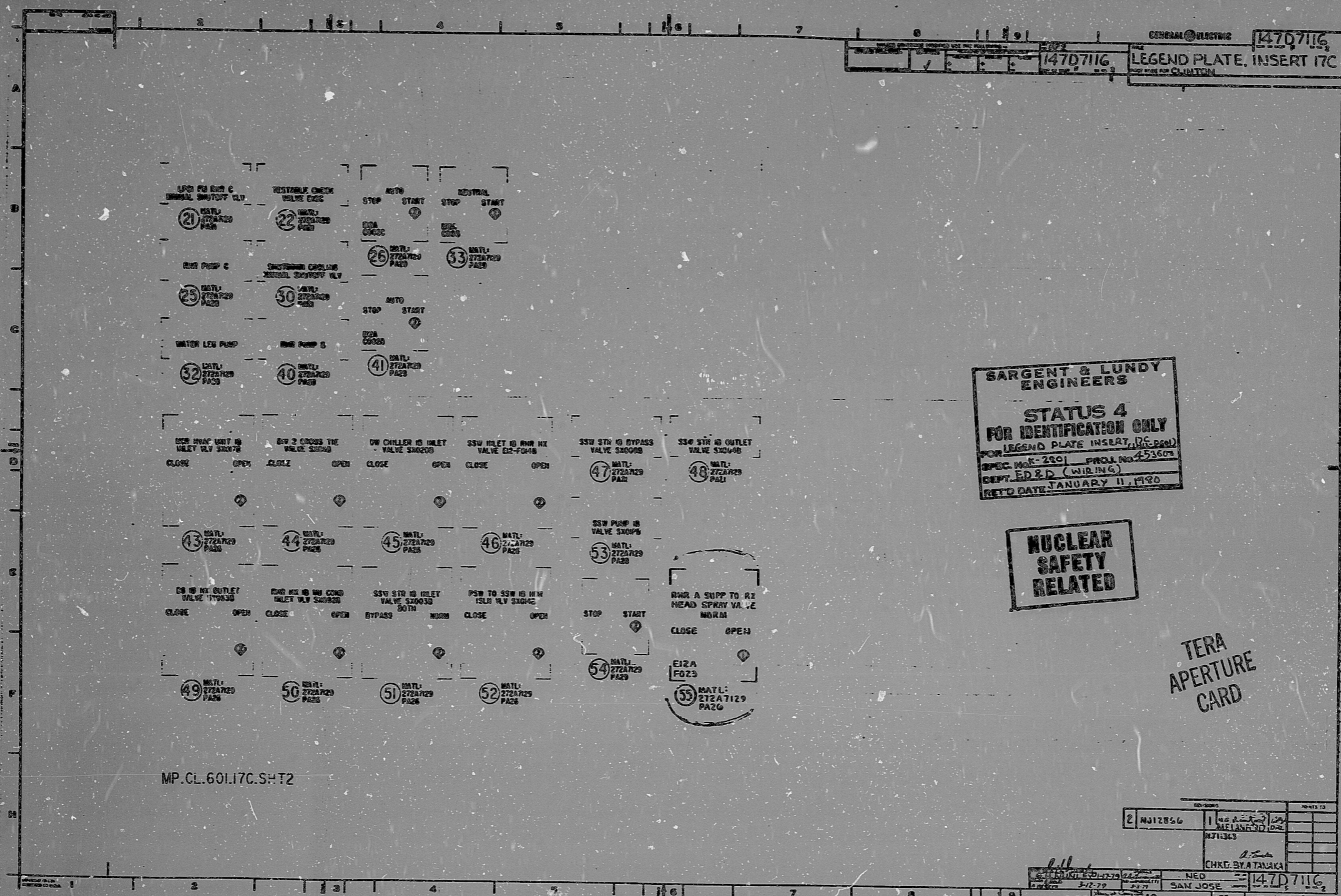


GENERAL ELECTRIC 147D7116
LEGEND PLATE, INSERT 17C
FOR USE ON CLINTON



SARGENT & LUNDY
ENGINEERS
STATUS 4
FOR IDENTIFICATION ONLY
FOR LEGEND PLATE INSERT, (R&E-280)
SPEC. NO. E-280 PROJ. NO. 453604
DEPT. E&E (WIRING)
RET'D DATE: JANUARY 11, 1980

**NUCLEAR
SAFETY
RELATED**

TERA
APERTURE
CARD

BALDWIN COPY # *17C*
AUG 18 1981

FOR REFERENCE ONLY
Not To Be Used For Construction

REV.	DATE	BY	CHKD. BY
1	3-7-79	WED	147D7116
2	3-7-79	WED	147D7116

CHD BY: CH. CONST. 10 2 MAR 79 CI T 100 4

RIDS

811120769

