

UNLESS OTHERWISE SPECIFIED USE THE FOLLOWING:
 STANDARD SYMBOLS: SOURCE: GEARS: MATERIALS: FINISHES: TOLERANCES: DIMENSIONS: UNLESS OTHERWISE SPECIFIED USE THE FOLLOWING:
 112D2127
 INSERT P800-62C
 FOR SAN JOSE CLINTON I
 DISCUSSED

TABLE I (CONT)

PART NO.	MARKING	QTY	MP ITEM NO.	CHAR. SIZE
1028	(1) RR PMP IA SEAL/OIL (2) CLR INLT VLV ICC06B (3) CLOSE (5) OPEN	2	164	.12
1029	(1) RR PMP IB SEAL/OIL (2) CLR INLT VLV ICC06S (3) CLOSE (5) OPEN	2	164	
1030	(1) CCW INBD SUPPLY (2) TO MRHX VLV ICC127 (3) CLOSE (5) OPEN	2	164	
1031	(1) FC PMP IA DESCH (2) CROSS TIE VLV ICC06A (3) CLOSE (5) OPEN	1	164	
1032	(1) FC DEMIN INLT (2) HDR VLV IFC07 (3) CLOSE (5) OPEN	1	164	
1033	(1) FC HX IA INLT (2) CROSS TIE VLV IFC02AA (3) CLOSE (5) OPEN	1	164	
1034	(1) FP CNMT INBD (2) ISOL VLV IFC053	2	164	
1035	(1) FUEL POOL HX IA CCW OUTLT VLV ICC076A (3) CLOSE (5) OPEN	1	164	
1036	(1) FUEL POOL HX IB CCW OUTLT VLV ICC076B (3) CLOSE (5) OPEN	2	164	
1037	(1) RR PMP IA SEAL/OIL (2) CLR OUTLT VLV ICC07A (3) CLOSE (5) OPEN	2	164	
1038	(1) RR PMP IB SEAL/OIL (2) CLR OUTLT VLV ICC07B (3) CLOSE (5) OPEN	2	164	
1039	(1) CCW CNMT INBD RTN (2) FROM MRHX ICC060 (3) CLOSE (5) OPEN	2	164	
1040	(1) FC PMP IB (2) SUCT VLV IFC01B (3) CLOSE (5) OPEN	2	164	
1041	(1) FC PMP IB DESCH (2) CROSS TIE VLV IFC06B (3) CLOSE (5) OPEN	2	164	
1042	(1) FC DEMIN OUTLT (2) HDR VLV IFC02B (3) CLOSE (5) OPEN	2	164	
1043	(1) FC HX IB INLT (2) CROSS TIE VLV IFC02AB (3) CLOSE (5) OPEN	2	164	
1044	(1) FP DRYWELL OUTBD (2) ISOL VLV IFC07B (3) CLOSE (5) OPEN	1	164	
1045	(1) CNMT CCW RTN LINE (2) OUTBD VLV ICC05E (3) CLOSE (5) OPEN	1	164	
1046	(1) RR PMP SSW RTN CNMT (2) OUTBD ISOL ICC072 (3) CLOSE (5) OPEN	2	164	
1047	(1) RR PMP SSW RTN CNMT (2) INBD ISOL ICC071 (3) CLOSE (5) OPEN	2	164	
1048	(1) CNMT CCW RTN LINE (2) INBD VLV ICC05S (3) CLOSE (5) OPEN	2	164	
1049	(1) CCW CNMT INBD RTN (2) FROM MRHX ICC12B (3) CLOSE (5) OPEN	1	164	
1050	(1) FUEL POOL CLG (2) PUMP IFC02PB	2	161	
1051	(1) FTR DEMIN BYPS TO (2) HX IB VLV IFC00AB (3) CLOSE (5) OPEN	2	164	
1052	(1) FC HX IB OUTLT (2) VLV IFC026B	2	162	
1053	(1) FC HX IB INLT (2) VLV IFC026A (3) CLOSE (5) OPEN	2	164	
1054	(1) FP DRYWELL INBD (2) ISOL VLV IFC07A (3) CLOSE (5) OPEN	2	164	
1055	(1) ANNUNC (2) PB SILENCE	1	163	.12

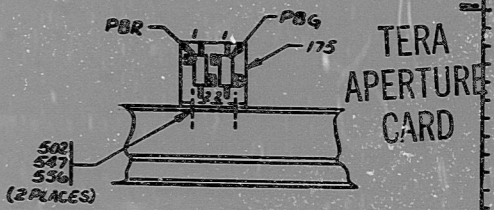
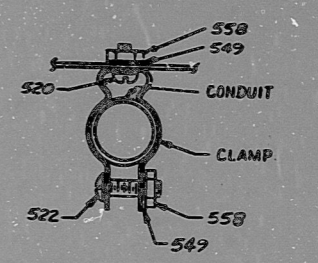
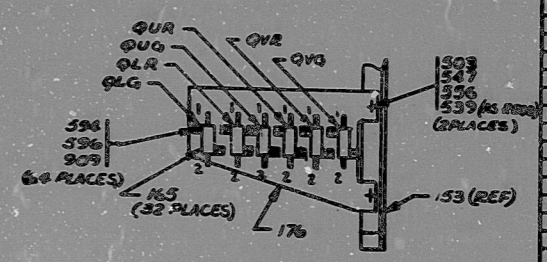


TABLE I (CONT)

PART NO.	MARKING	QTY	MP ITEM NO.	CHAR. SIZE
1056	(1) ANNUNC (2) PB ACKNOWLEDGE	1	163	.12
1057	(1) ANNUNC (2) PB RESET	1	163	.12
1058	(1) ANNUNC (2) PB TEST	1	163	.12

FOR REFERENCE ONLY
 Not To Be Used For Construction

REVISIONS

NO.	DATE	BY	CHKD	DESCRIPTION
1	11/22/80	W. J.
2

112D2127
 SAN JOSE
 INCORPORATED

RIDS

811110114

