

TABLE I (CONT)

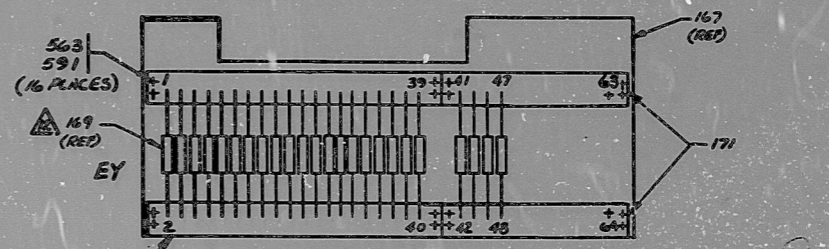
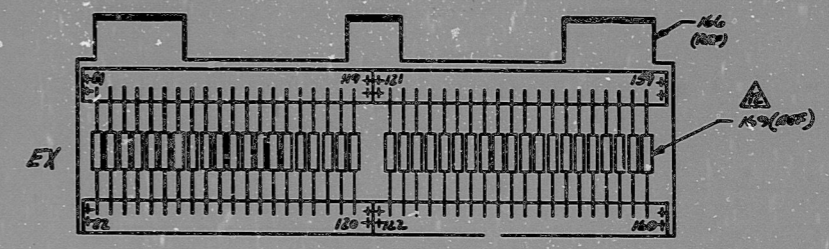
PART NO.	MARKING	HP PART NO.	CHAR SIZE
1016	(1) LP NTR 2A S-U VENT (2) VLV IDV01DA (3) CLOSE (S) OPEN	160	.12
1017	(1) LP NTR 2C S-U VENT (2) VLV IDV01DA (3) CLOSE (S) OPEN	160	
1018	(1) LP NTR 2A S-U VENT (2) VLV IDV03DA (3) CLOSE (S) OPEN	160	
1019	(1) DRN CLR & LP NTR 1A (2) ISOL VLV ICS020A & 5A (3) CLOSE (S) OPEN	160	.12
1020	DRN CLR 1A	163	▲
1021	LP NTR 1A	163	▲
1022	(1) DRN CLR & LP NTR 1A (2) OUTLT VLV ICS005A	162	.12
1023	(1) LP NTR STRANG A ISOL (2) VLV ICS006A & 8A (3) CLOSE (S) OPEN	160	.12
1024	(1) LP NTR 2A EXT STM (2) ISOL VLV ICS008A (3) CLOSE (S) OPEN	160	.12
1025	LP NTR 2A	163	▲
1026	(1) LP NTR 2A EXT STM (2) ISOL VLV ICS005C (3) CLOSE (S) OPEN	160	.12
1027	(1) LP NTR 3A EXT STM (2) ISOL VLV ICS007A (3) CLOSE (S) OPEN	160	.12
1028	LP NTR 3A	163	▲
1029	(1) LP NTR 4A EXT STM (2) ISOL VLV ICS009A (3) CLOSE (S) OPEN	160	.12
1030	DRN CLR & LP NTR 1B (2) ISOL VLV ICS005B & 5B (3) CLOSE (S) OPEN	160	.12
1031	LP NTR 4A	163	▲
1032	LP NTR 5A	163	▲
1033	(1) LP NTR STRANG A OUTL (2) ISOL VLV ICS008A	162	.12
1034	(1) LP NTR 1A/B BYPASS (2) VLV ICS004	160	
1035	(1) 8TH STAGE EXT STM (2) SUPPLY	164	
1036	(1) LP NTR 2A EXT STM LO (2) PT DRN VLV ICS031A	162	
1037	(1) LP NTR 2A EXT STM (2) DRN VLV ICS029A	162	
1038	(1) LP NTR 2B EXT STM (2) DRN VLV ICS029B	162	
1039	(1) LP NTR 2B EXT STM LO (2) PT DRN VLV ICS031B	162	
1040	(1) 8TH STAGE EXT STM (2) SUPPLY	164	
1041	(1) LP NTR 2A EXT STM LO (2) PT DRN VLV ICS031C	162	
1042	(1) LP NTR 2A EXT STM (2) DRN VLV ICS029C	162	
1043	(1) LP NTR 2B EXT STM (2) DRN VLV ICS029D	162	.12

TABLE I (CONT)

PART NO.	MARKING	HP PART NO.	CHAR SIZE
1044	(1) LP NTR 2B EXT STM LO (2) PT DRN VLV ICS031D	162	.12
1045	(1) 8TH STAGE EXT STM (2) SUPPLY	164	
1046	(1) LP NTR 3A EXT STM LO (2) PT DRN VLV ICS032A	162	
1047	(1) LP NTR 3A EXT STM (2) DRN VLV ICS029A	162	
1048	(1) LP NTR 3B EXT STM (2) DRN VLV ICS029B	162	
1049	(1) LP NTR 3B EXT STM LO (2) PT DRN VLV ICS032B	162	
1050	(1) 8TH SUPPLY EXT STM (2) SUPPLY	164	
1051	(1) LP NTR 4A EXT STM LO (2) PT DRN VLV ICS033A	162	
1052	(1) LP NTR 4A EXT STM (2) DRN VLV ICS026A	162	
1053	(1) LP NTR 4B EXT STM (2) DRN VLV ICS026B	162	
1054	(1) LP NTR 4B EXT STM LO (2) PT DRN VLV ICS033B	162	
1055	(1) HP EXHAUST EXT STM (2) SUPPLY	164	
1056	(1) LP NTR 5A EXT STM (2) DRN VLV ICS016A	162	
1057	(1) LP NTR 5B EXT STM (2) DRN VLV ICS016B	162	
1058	(1) DRN CLR & LP NTR 1B (2) ISOL VLV ICS005B & 5B (3) CLOSE (S) OPEN	160	.12
1059	DRN CLR 1B	163	▲
1060	LP NTR 1B	163	▲
1061	(1) DRN CLR & LP NTR 1B (2) OUTLT VLV ICS005B	162	.12
1062	(1) LP NTR STRANG B ISOL (2) VLV ICS006B & 8B (3) CLOSE (S) OPEN	164	.12
1063	(1) LP NTR 2B EXT STM (2) ISOL VLV ICS005B (3) CLOSE (S) OPEN	160	.12
1064	LP NTR 2B	163	▲
1065	(1) LP NTR 2B EXT STM (2) ISOL VLV ICS005D (3) CLOSE (S) OPEN	160	.12
1066	(1) LP NTR 3B EXT STM (2) ISOL VLV ICS007B (3) CLOSE (S) OPEN	160	.12
1067	LP NTR 3B	163	▲
1068	(1) LP NTR 4B EXT STM (2) ISOL VLV ICS009B (3) CLOSE (S) OPEN	160	.12
1069	LP NTR 4B	163	▲
1070	(1) LP NTR 5B EXT STM (2) ISOL VLV ICS008B (3) CLOSE (S) OPEN	160	.12
1071	(1) LP NTR STRANG B OUTL (2) ISOL VLV ICS008B	162	.12

TABLE I (CONT)

PART NO.	MARKING	HP PART NO.	CHAR SIZE
1072	LP NTR 5B	163	▲
1073	(1) LP NTR 1B S-U VENT (2) VLV IDV004B (3) CLOSE (S) OPEN	160	.12
1074	(1) LP NTR 1B S-U VENT (2) VLV IDV002B (3) CLOSE (S) OPEN	160	
1075	(1) LP NTR 2B S-U VENT (2) VLV IDV001B (3) CLOSE (S) OPEN	160	
1076	(1) LP NTR 2B S-U VENT (2) VLV IDV001B (3) CLOSE (S) OPEN	160	
1077	(1) ANNUNCI (2) PB-SILENCE	165	
1078	(1) ANNUNCI (2) A-RESET	165	
1079	(1) LP NTR 3B S-U VENT (2) VLV IDV003B (3) CLOSE (S) OPEN	160	
1080	(1) LP NTR 3B S-U VENT (2) VLV IDV003B (3) CLOSE (S) OPEN	160	
1081	(1) LP NTR 4B S-U VENT (2) VLV IDV005B (3) CLOSE (S) OPEN	160	
1082	(1) LP NTR 4B S-U VENT (2) VLV IDV005B (3) CLOSE (S) OPEN	160	
1083	(1) LP NTR 5B S-U VENT (2) VLV IDV007B (3) CLOSE (S) OPEN	160	
1084	(1) LP NTR 5B S-U VENT (2) VLV IDV007B (3) CLOSE (S) OPEN	160	
1085	(1) DRN CLR 1B OPER VENT (2) VLV IDV057B (3) CLOSE (S) OPEN	160	
1086	(1) LP NTR 1B OPER VENT (2) VLV IDV003B (3) CLOSE (S) OPEN	160	
1087	(1) LP NTR 1B OPER VENT (2) VLV IDV001B (3) CLOSE (S) OPEN	160	
1088	(1) LP NTR 2B OPER VENT (2) VLV IDV009B (3) CLOSE (S) OPEN	160	
1089	(1) ANNUNCI (2) PB-ACKNOWLEDGE	165	
1090	(1) ANNUNCI (2) PB-TEST	165	
1091	(1) LP NTR 3B OPER VENT (2) VLV IDV059B (3) CLOSE (S) OPEN	160	
1092	(1) LP NTR 4B OPER VENT (2) VLV IDV011B (3) CLOSE (S) OPEN	160	
1093	(1) LP NTR 5B OPER VENT (2) VLV IDV013B (3) CLOSE (S) OPEN	160	.12



TERA APERTURE CARD  
 COPY # 17C  
 AUG 18 1981  
 FOR REFERENCE ONLY  
 Not To Be Used For Construction

REV	DATE	BY	CHKD	APP'D	POINTS TO
1	11/18/77	AL	AL		
2	11/15/81	AL	AL		

CONTROL ISSUE  
 2 NJ15857

112D2137  
 SAN JOSE  
 1/14/77  
 R. B. G.

RIDS

811110073

