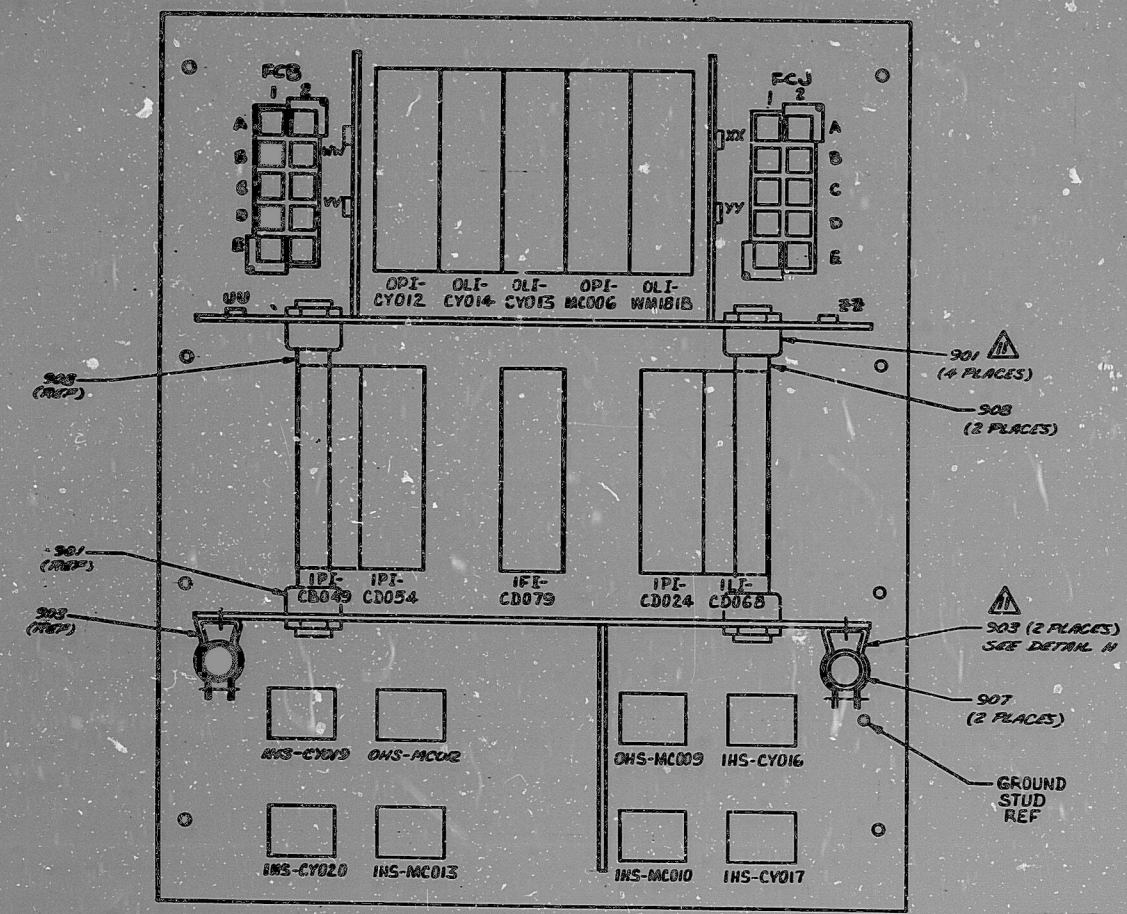
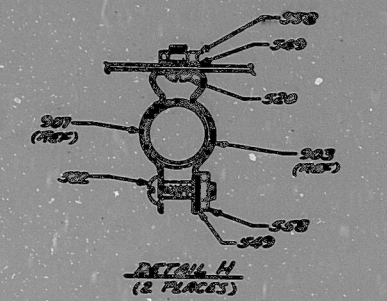


PART NO.	MARKING	MP CHAR ITEM NO.	SIZE
1000A	COND IN WTR STOR STNR LEVEL	①	.12
1000B	COND XFER PMP DISCH PRESSURE	②	
1000C	COND STOR STNR 1A LEVEL	③	.157
1000D	COND STOR STNR 1B LEVEL	④	
1000E	COND XFER PMP DISCH HDR PRESSURE	⑤	
1001	COND POLISHER INLET FLOW	⑥	.158
1002A	COND HOTWELL LEVEL	⑦	
1002B	COND PMP DISCH HDR PRESSURE	⑧	.159
1003A	COND BATH PMP DISCH HDR PRESSURE	⑨	.159
1003B	COND BATH PMP DISCH HDR PRESSURE	⑩	.159
1004	COND SYS DIV 1 OUT OF SERVICE NORMAL (S) INOP	⑪	.160
1005	COND SYS DIV 1 OUT OF SERVICE NORMAL (S) INOP	⑫	.160
1006	COND SYS DIV 2 OUT OF SERVICE NORMAL (S) INOP	⑬	.160
1007	COND SYS DIV 2 OUT OF SERVICE NORMAL (S) INOP	⑭	.160
1008	COND SYS DIV 1 IN TEST NORMAL (S) TEST	⑮	.160
1009	COND SYS DIV 1 IN TEST NORMAL (S) TEST	⑯	.160
1010	COND SYS DIV 2 IN TEST NORMAL (S) TEST	⑰	.160
1011	COND SYS DIV 2 IN TEST NORMAL (S) TEST	⑱	.160 .12



TERA  
 APERTURE  
 CARD

REVISED BY DCC  
 AUG 18 1981  
 FOR REFERENCE ONLY  
 Not To Be Used For Construction

REV	DATE	BY	CHKD BY	APP'D BY	DESCRIPTION
1	11/22/77	W. J. R. / R. B. S.			CONTROL ISSUE
2	11/22/77	W. J. R. / R. B. S.			REVISION
3	11/22/77	W. J. R. / R. B. S.			REVISION
4	11/22/77	W. J. R. / R. B. S.			REVISION
5	11/22/77	W. J. R. / R. B. S.			REVISION
6	11/22/77	W. J. R. / R. B. S.			REVISION
7	11/22/77	W. J. R. / R. B. S.			REVISION
8	11/22/77	W. J. R. / R. B. S.			REVISION
9	11/22/77	W. J. R. / R. B. S.			REVISION
10	11/22/77	W. J. R. / R. B. S.			REVISION



RIDS

811110047

