

GENERAL ELECTRIC

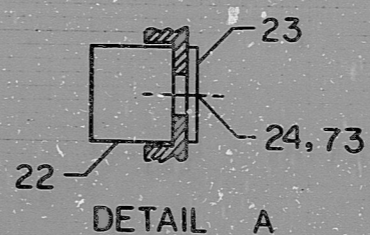
164C5874CA  
REV. 2

UNLESS OTHERWISE SPECIFIED USE THE FOLLOWING:  
APPLIED PRACTICES SURFACES FINISHES OR METHODS OTHERWISE SPECIFIED

TITLE  
OPERATOR CONTROL MODULE  
FIRST MADE PCB

LEGEND SEE ITEM 40	REF DESIGNATION	ITEM NO			REMARKS
		G1	G2	G3	
P741	SL111	32	32	32	
P742	SL121	33	33	33	
P743	SL131	32	32	32	
P744	SL141	32	32	32	
P745	SL151	33	33	33	
P746	SL161	32	32	32	
P747	SL211	32	32	32	
P748	DS221	28	28	28	
P749	DS231	29	29	29	
P750	—	—	—	—	SEE DETAIL A
P751	DS311	35	35	35	
P752	DS321	35	35	35	
P753	DS331	36	36	36	
P754	DS411	35	35	35	
P755	DS421	35	35	35	
P756	—	—	—	—	SEE DETAIL A
P757	—	—	—	—	SEE DETAIL A
P758	—	—	—	—	SEE DETAIL A
P759	SL132	32	32	32	
P760	SL142	32	32	32	
P761	SL152	33	33	33	
P762	SL162	33	33	33	
P763	S212	34	34	34	
P764	S222	38	38	38	
P765	S232	38	38	38	
P766	—	—	—	—	SEE DETAIL A
P767	DS312	36	36	36	
P768	DS322	37	37	37	
P769	—	—	—	—	SEE DETAIL A
P770	DS412	29	29	29	

LEGEND SEE ITEM 40	REF DESIGNATION	ITEM NO			REMARKS
		G1	G2	G3	
P771	DS422	35	35	35	
P772	—	—	—	—	SEE DETAIL A
P773	SI13	34	34	34	
P774	SI23	34	34	34	
P775	SI33	34	34	34	
P776	SI43	34	34	34	
P777	SI53	34	34	34	
P778	SI63	34	34	34	
P779	S213	34	34	34	
P780	S223	38	38	38	
P781	SL233	31	31	31	
P782	SL243	30	30	30	
P783	DS313	37	37	37	
P784	DS323	37	37	37	
P785	DS333	37	37	37	
P786	S413	38	38	38	
P787	S423	34	34	34	
P788	—	—	—	—	SEE DETAIL A
P789	SI64	34	34	34	
P790	S214	34	34	34	
P791	S314	34	34	34	
P792	S334	34	34	34	



TERA  
APERTURE  
CARD

164C5874CA

REVISIONS	POINTS TO
3 NJ12118	
4 NJ16903	

DESIGNED BY: A. MAJEKODUMI 12 JUN 79  
 CHECKED BY: W. H. W. 3 AUG 79  
 APPROVED BY: B. SIMAN 8 AUG 79  
 NED SAN JOSE  
 164C5874CA  
 CONT. ON SHEET F

BALDWIN COPY  
 AUG 18 1981

FOR REFERENCE ONLY  
 Not To Be Used For Construction



RIDS

8111100806

