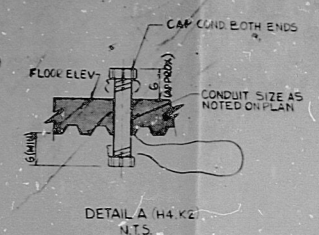
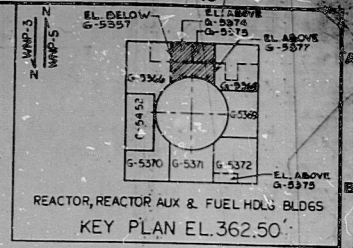
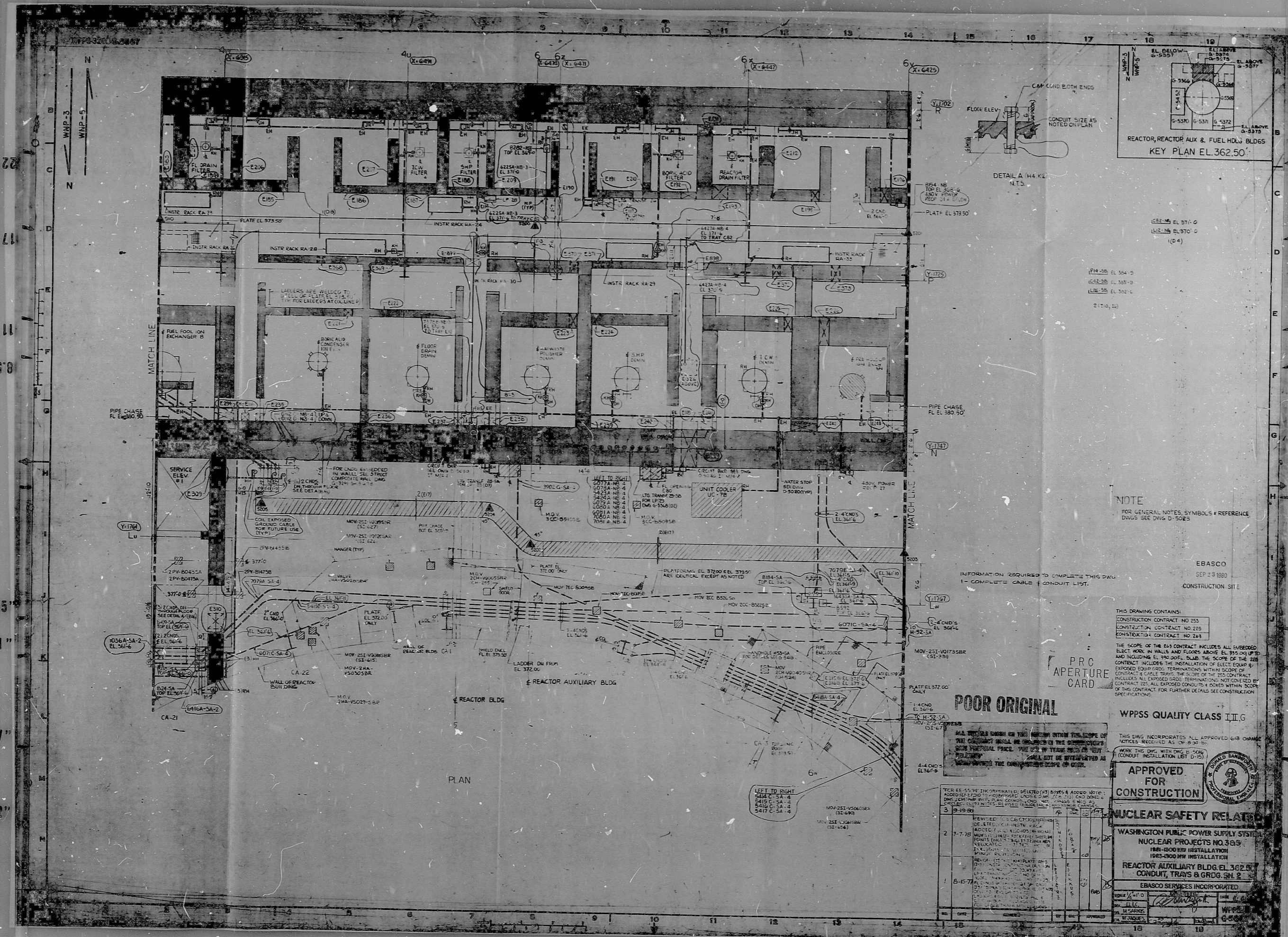


34

78



REACTOR, REACTOR AUX. & FUEL HOLD BLDGS  
KEY PLAN EL. 362.50

EL. BELOW 0-9557  
EL. ABOVE 0-9576  
EL. ABOVE 0-9579  
EL. ABOVE 0-9577

EL. BELOW 0-9370  
EL. ABOVE 0-9372  
EL. ABOVE 0-9375

EL. 362.50  
EL. 361.0  
EL. 360.0  
(0.4)

104-55 EL. 364.0  
104-56 EL. 363.0  
106-55 EL. 362.4  
2170, 10

NOTE  
FOR GENERAL NOTES, SYMBOLS & REFERENCE  
DWGS SEE DWG D-5023

EBASCO  
SEP 23 1980  
CONSTRUCTION SITE

THIS DRAWING CONTAINS:  
CONSTRUCTION CONTRACT NO. 253  
CONSTRUCTION CONTRACT NO. 215  
CONSTRUCTION CONTRACT NO. 243

THE SCOPE OF THE EAS CONTRACT INCLUDES ALL ENRICHED  
ELECT. HOOD. IN WALLS AND FLOORS ABOVE EL. 355.00 UP TO  
AND INCLUDING EL. 360.00. THE SCOPE OF THE EAS  
CONTRACT INCLUDES THE INSTALLATION OF ELECT. EQUIP. &  
ENRICHED EQUIP. TERMINATIONS WITHIN SCOPE OF  
CONTRACT & CABLE TRAYS. THE SCOPE OF THE EAS CONTRACT  
INCLUDES ALL ENRICHED CABLE TRAYS, TERMINATIONS, NOT COVERED BY  
CONTRACT. SEE ALL ENRICHED CABLE TRAYS WITHIN SCOPE  
OF THE CONTRACT FOR FURTHER DETAILS SEE CONSTRUCTION  
SPECIFICATIONS.

PRO  
APERTURE  
CARD

POOR ORIGINAL

WPPSS QUALITY CLASS II G

THIS DWG INCORPORATES ALL APPROVED CHG. ORDER  
NOTICES RECEIVED AS OF 9-30-80  
WORK THE DWG WITH DRC 10-0-80  
(CONDUIT INSTALLATION LET D-15)

APPROVED FOR CONSTRUCTION

NUCLEAR SAFETY RELATED

WASHINGTON PUBLIC POWER SUPPLY SYSTEM  
NUCLEAR PROJECTS NO. 309

1983-1988 INSTALLATION

REACTOR AUXILIARY BLDG. EL. 362.50  
CONDUIT, TRAYS & GRDG. SM. 2

EBASCO SERVICES INCORPORATED

NO.	DATE	DESCRIPTION	BY	CHKD.	APPROVED
1	8-15-77	REVISED TO CORRECT DISCREPANCIES IN ELECTRICAL SYMBOLS & ADDITIONAL CONDUIT SIZES IN THE REACTOR AUXILIARY BUILDING	...	...	...
2	7-7-78	ADDED TO CORRECT DISCREPANCIES IN ELECTRICAL SYMBOLS & ADDITIONAL CONDUIT SIZES IN THE REACTOR AUXILIARY BUILDING	...	...	...
3	9-19-80	REVISED TO CORRECT DISCREPANCIES IN ELECTRICAL SYMBOLS & ADDITIONAL CONDUIT SIZES IN THE REACTOR AUXILIARY BUILDING	...	...	...

PLAN

LEFT TO RIGHT  
5417 C-5A-4  
5418 C-5A-4  
5419 C-5A-4  
5416 C-5A-4

18 19

RIDS

8303300601

