

34

34

22

22

17

17

11

11

8.5

8.5

8.5

8.5

11

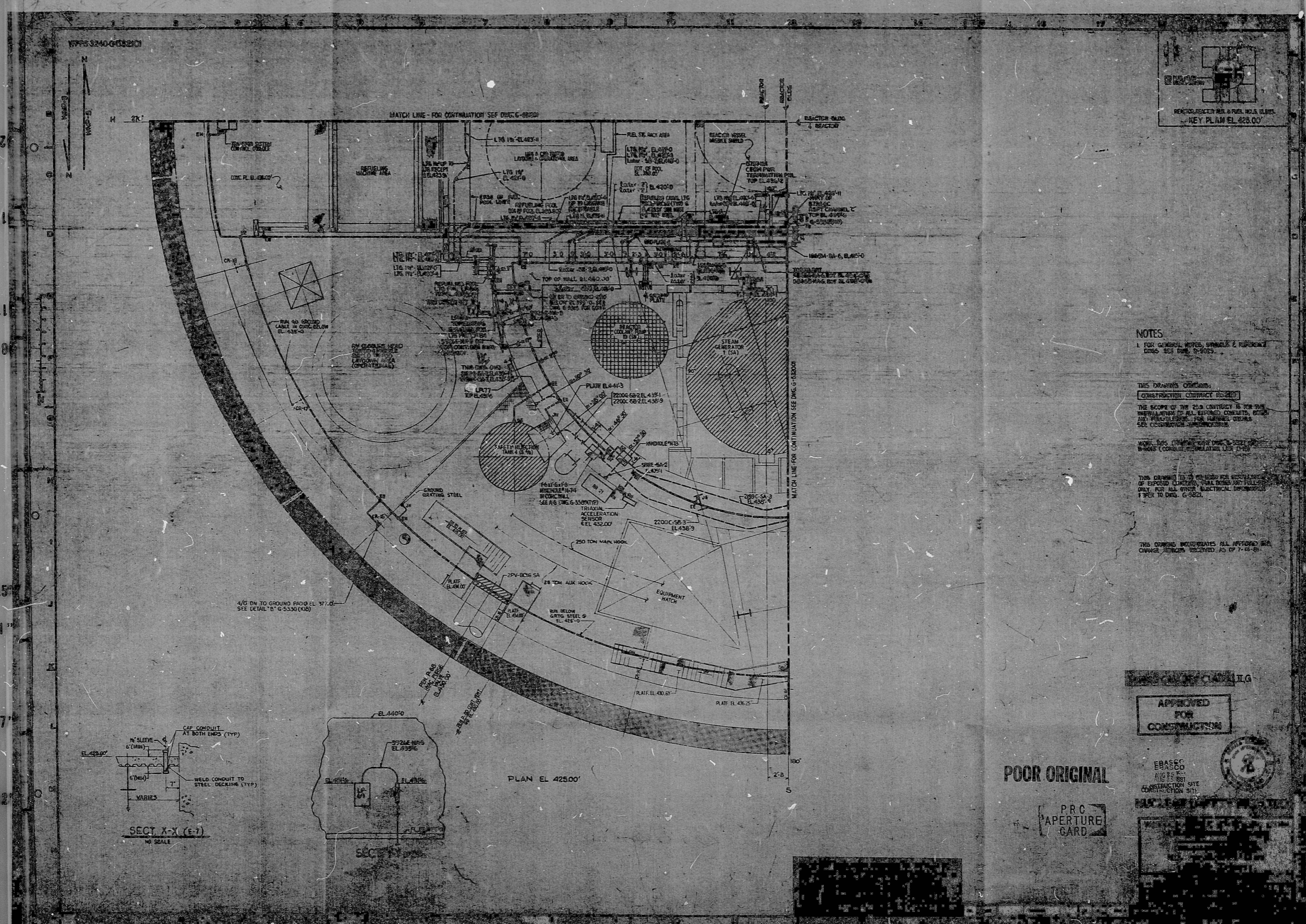
11

17

17

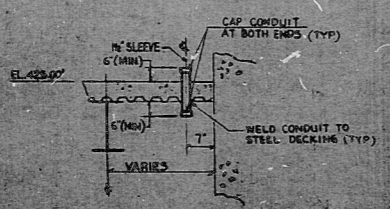
22

22

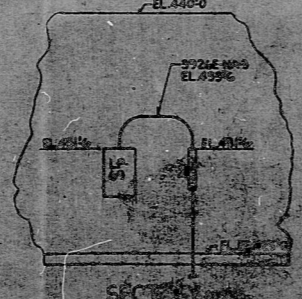


NOTES

1. FOR GENERAL NOTES, SYMBOLS & REFERENCES SEE DRAWING G-5000.
- THIS DRAWING CONTAINS:
CONSTRUCTION CONTRACT NO. 200
- THE SCOPE OF THE THIS CONTRACT IS FOR THE INSTALLATION OF ALL EXPOSED CONDUITS, BUSES AND TRAYS FOR THE REACTOR VESSEL. SEE CONSTRUCTION CONTRACT NO. 200.
- WORK THIS DRAWING WITH DRAWING G-5000 & G-5001 (CONDUIT INSTALLATION FOR THIS).
- THIS DRAWING IS TO BE USED FOR ESTIMATION OF EXPOSED CONDUIT, BUSES AND TRAYS ONLY. FOR ALL OTHER ELECTRICAL INSTRUMENTS REFER TO DRAWING G-5000.
- THIS DRAWING INDICATES ALL APPROVED AND CHANGE ORDERS RECEIVED AS OF 7-11-61.



SECT. X-X (E-7)
NO SCALE



SECT. Y-Y

PLAN EL. 425.00'

POOR ORIGINAL

PRC APERTURE GARD

APPROVED FOR CONSTRUCTION

EBASCO
 AUG 12 1961
 CONSTRUCTION SITE
 CHATTANOOGA SITE



RIDS

8303300556

