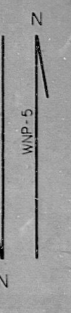
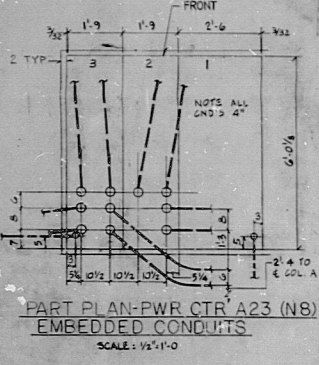
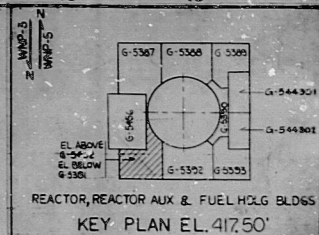
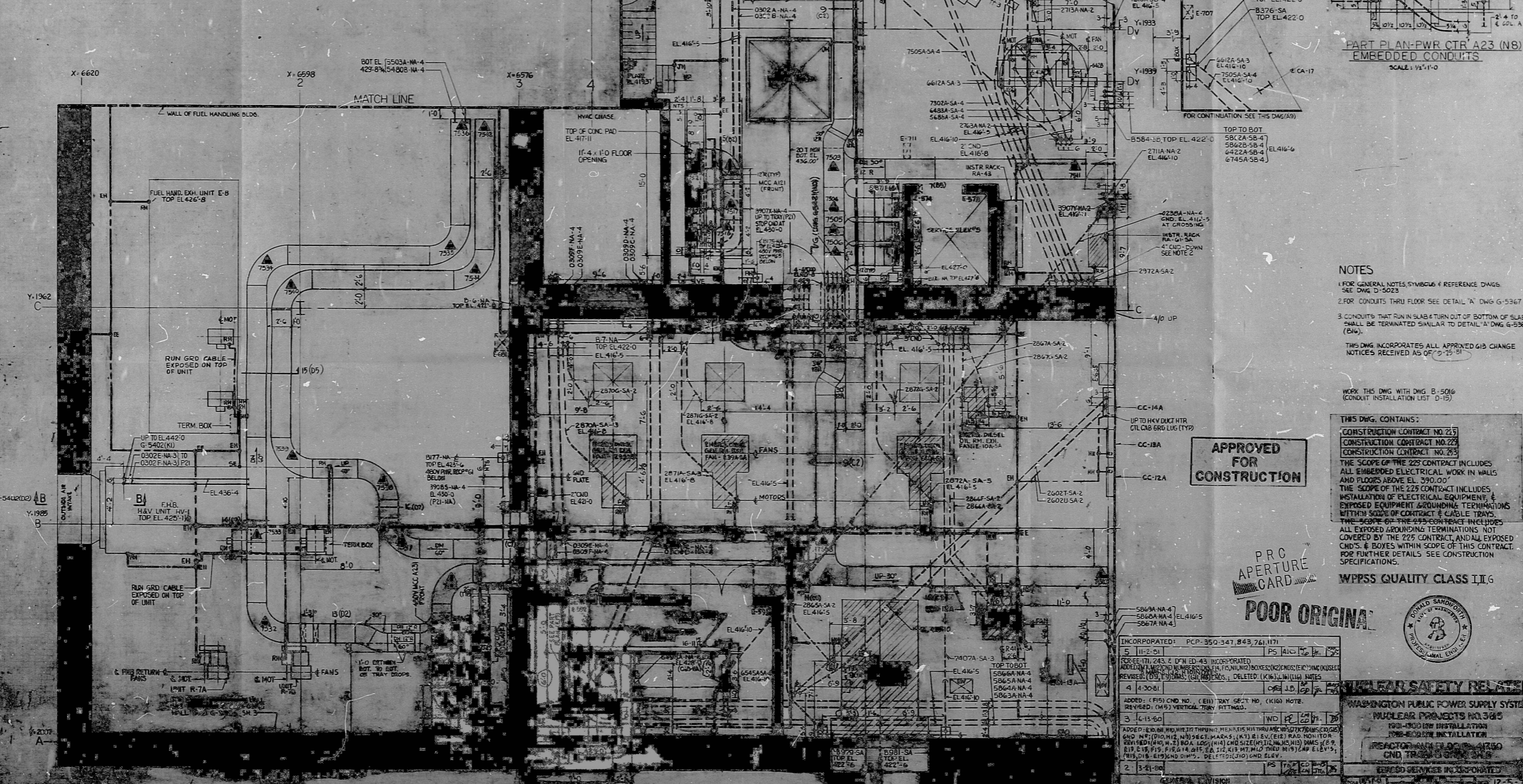


WPPSS-3240-B-5391



(P21-NA) EL 430-9 (C63-NA) EL 428-3 1 (D10)	(P21-NA) EL 430-9 (C63-NA) EL 428-3 2 (C11)	(P21-NA) EL 429-6 (C63-NA) EL 428-3 3 (L8)	(P21-NA) EL 429-6 (C63-NA) EL 427-3 4 (L6)	(P21-NA) EL 429-6 (C63-NA) EL 427-3 5 (F10)	(P21-NA) EL 429-6 (C63-NA) EL 428-3 6 (D10)	(P21-NA) EL 429-6 (C63-NA) EL 427-0 7 (F12)	(P21-NA) EL 429-6 (C63-NA) EL 427-0 8 (G11)	(P21-NA) EL 429-6 (C63-NA) EL 427-0 9 (C14, T1)	(P21-NA) EL 429-6 (C63-NA) EL 427-0 10 (L13)	(P21-NA) EL 429-6 (C63-NA) EL 427-0 11 (L11)	(P21-NA) EL 429-6 (C63-NA) EL 427-0 12 (L7)	(P21-NA) EL 429-6 (C63-NA) EL 427-0 13 (K5)	(P21-NA) EL 429-6 (C63-NA) EL 427-0 14 (K3)	(P21-NA) EL 429-6 (C63-NA) EL 427-0 15 (L4)	(P21-NA) EL 429-6 (C63-NA) EL 427-0 16 (K5)
---	---	--	--	---	---	---	---	---	--	--	---	---	---	---	---



NOTES

- FOR GENERAL NOTES SYMBOLS & REFERENCE DWGS SEE DWG D-5023
- FOR CONDUITS THRU FLOOR SEE DETAIL 'A' DWG G-5367
- CONDUITS THAT RUN IN SLAB & TURN OUT OF BOTTOM OF SLAB SHALL BE TERMINATED SIMILAR TO DETAIL 'A' DWG G-5367 (2ND)

THIS DWG INCORPORATES ALL APPROVED GIB CHANGE NOTICES RECEIVED AS OF 2-25-81

WORK THIS DWG WITH DWG B-5016
(CONDUIT INSTALLATION LIST D-15)

APPROVED FOR CONSTRUCTION

PRC APERTURE CARD
POOR ORIGINAL

THIS DWG CONTAINS:

- CONSTRUCTION CONTRACT NO. 225
- CONSTRUCTION CONTRACT NO. 225
- CONSTRUCTION CONTRACT NO. 225

THE SCOPE OF THE 225 CONTRACT INCLUDES ALL EMBEDDED ELECTRICAL WORK IN WALLS AND FLOORS ABOVE EL. 390.00'

THE SCOPE OF THE 225 CONTRACT INCLUDES INSTALLATION OF ELECTRICAL EQUIPMENT & EXPOSED EQUIPMENT GROUNDING TERMINATIONS WITHIN SCOPE OF CONTRACT & CABLE TRAYS.

THE SCOPE OF THE 225 CONTRACT INCLUDES ALL EXPOSED GROUNDING TERMINATIONS NOT COVERED BY THE 225 CONTRACT, AND ALL EXPOSED CHDS. & BOVES WITHIN SCOPE OF THIS CONTRACT. FOR FURTHER DETAILS SEE CONSTRUCTION SPECIFICATIONS.

WPPSS QUALITY CLASS II.6



INCORPORATED: P.C.P. 350-341, 843, 261, 171	PS AIG 1/2 1/2
5 11-2-81	PS AIG 1/2 1/2
FOR EIT 243 & 244 INCORPORATED	
ADDRESS: 1100 N. 10TH ST., SUITE 100, DENVER, CO 80202	
REVISION: (01) SYSTEMS (CHANGES) - DELETED (K) (M) (L) (N) (O) (P) (Q) (R) (S) (T) (U) (V) (W) (X) (Y) (Z)	
4 1-20-81	CHG 1/2 1/2
ADDRESS: 1100 N. 10TH ST., SUITE 100, DENVER, CO 80202	
3 1-15-81	NO 1/2 1/2
ADDRESS: 1100 N. 10TH ST., SUITE 100, DENVER, CO 80202	
2 1-15-81	NO 1/2 1/2
ADDRESS: 1100 N. 10TH ST., SUITE 100, DENVER, CO 80202	
1 1-15-81	NO 1/2 1/2

LEAD SAFETY RELEASE

WASHINGTON PUBLIC POWER SUPPLY SYSTEM
NUCLEAR PROJECTS NO. 385
1981-1982 INSTALLATION
1981-1982 INSTALLATION

REACTOR AUX. & FUEL H.C.G. BLDGS
CND TRAYS & GROUNDING

SEE DWG B-5016

RIDS

8303300544

