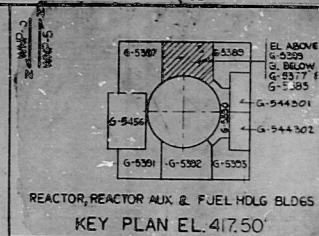
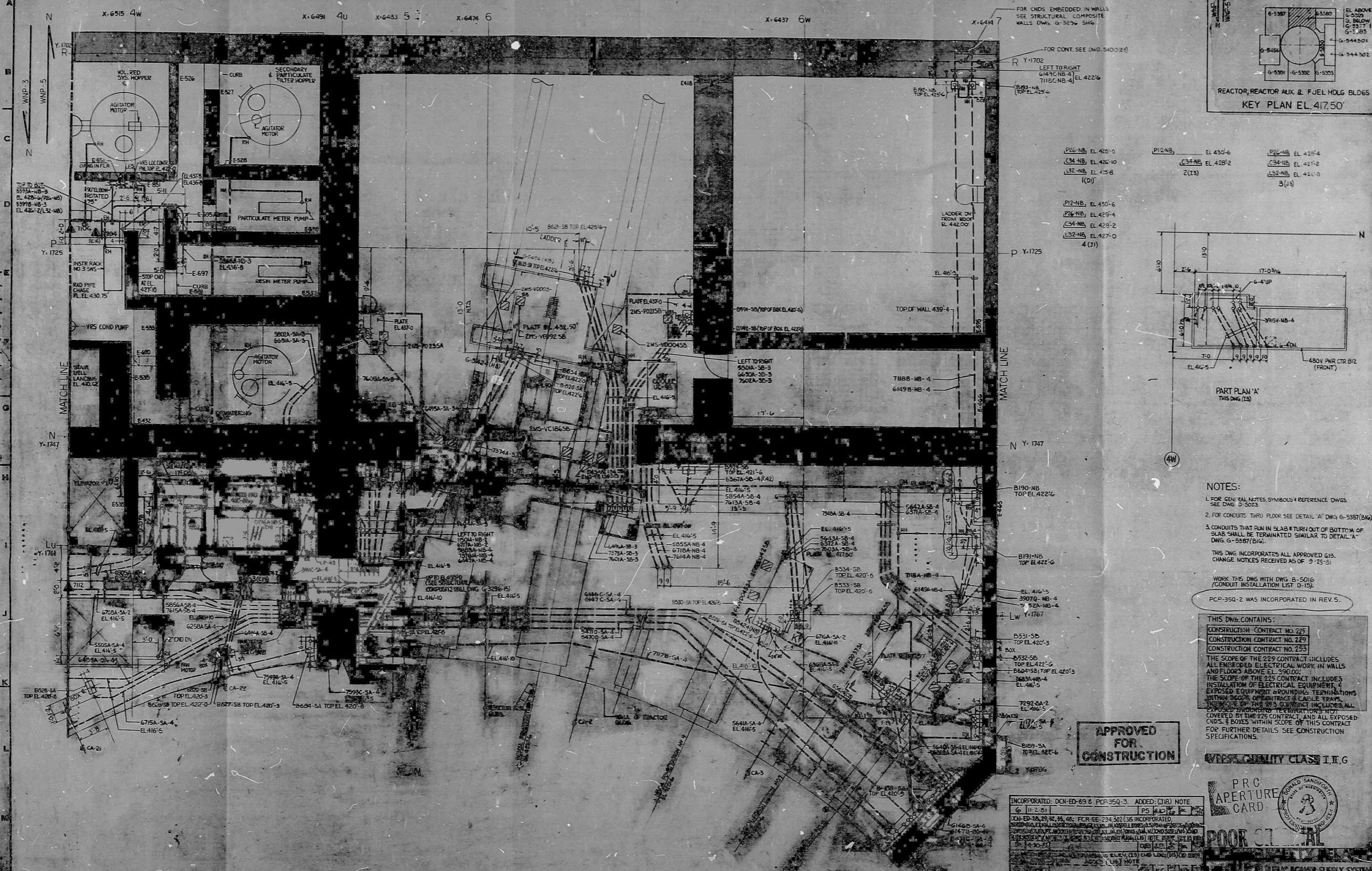
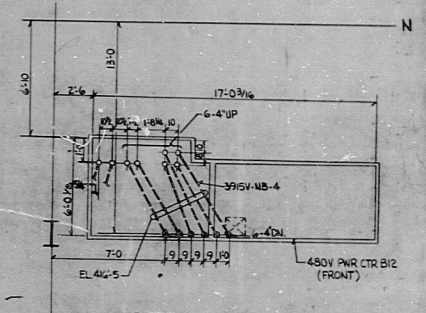


WPPS-3240-G-5398



P26-NB	EL. 420-0	P26-NB	EL. 430-6	P26-NB	EL. 420-4
C34-NB	EL. 424-10	C34-NB	EL. 428-2	C34-NB	EL. 427-8
L32-NB	EL. 425-6	L32-NB	EL. 425-2	L32-NB	EL. 424-0
					3(1)
P26-NB	EL. 420-6				
P26-NB	EL. 429-4				
C34-NB	EL. 428-2				
L32-NB	EL. 427-0				
					4(1)



NOTES:

1. FOR GENERAL NOTES, SYMBOLS & REFERENCE DWGS. SEE DWG. G-5397(8A).
2. FOR CONDUITS THRU FLOOR SEE DETAIL 'A' DWG. G-5397(8A).
3. CONDUITS THAT RUN IN SLAB & TURN OUT OF BOTTOM OF SLAB SHALL BE TERMINATED SIMILAR TO DETAIL 'A' DWG. G-5397(8A).

THIS DWG. INCORPORATES ALL APPROVED G.I.S. CHANGE NOTICES RECEIVED AS OF 9-25-51.

WORK THIS DWG. WITH DWG. B-5016 (CONDUIT INSTALLATION LIST D-15).

PCP-350-2 WAS INCORPORATED IN REV. 5.

APPROVED FOR CONSTRUCTION

THIS DWG. CONTAINS:
 CONSTRUCTION CONTRACT NO. 228
 CONSTRUCTION CONTRACT NO. 229
 CONSTRUCTION CONTRACT NO. 253

THE SCOPE OF THE 229 CONTRACT INCLUDES ALL EMBEDDED ELECTRICAL WORK IN WALLS AND FLOORS ABOVE EL. 390.000.

THE SCOPE OF THE 225 CONTRACT INCLUDES INSTALLATION OF ELECTRICAL EQUIPMENT & EXPOSED EQUIPMENT WORKING TERMINATIONS WITHIN SCOPE OF CONTRACT & CABLE TRAYS.

THE SCOPE OF THE 225 CONTRACT INCLUDES ALL ELECTRICAL WORKING TERMINATIONS NOT COVERED BY THE 225 CONTRACT, AND ALL EXPOSED CHDS. & BOXES WITHIN SCOPE OF THIS CONTRACT.

FOR FURTHER DETAILS SEE CONSTRUCTION SPECIFICATIONS.

WPPS QUALITY CLASS I.I.I.G



INCORPORATED: DCN-ED-69 & PCP-350-3. ADDED: (JIB) NOTE
 G-11-2-51
 PS 1407-1-1-51

CON-ED-69-2-2-51 FOR EE-234-507-55 INCORPORATED.
 CON-ED-69-2-2-51 FOR EE-234-507-55 INCORPORATED.
 CON-ED-69-2-2-51 FOR EE-234-507-55 INCORPORATED.
 CON-ED-69-2-2-51 FOR EE-234-507-55 INCORPORATED.

FOR FURTHER DETAILS SEE CONSTRUCTION SPECIFICATIONS.

REVISIONS:

NO.	DATE	DESCRIPTION
1	11-2-51	ISSUED FOR CONSTRUCTION
2	11-2-51	ISSUED FOR CONSTRUCTION
3	11-2-51	ISSUED FOR CONSTRUCTION
4	11-2-51	ISSUED FOR CONSTRUCTION
5	11-2-51	ISSUED FOR CONSTRUCTION
6	11-2-51	ISSUED FOR CONSTRUCTION
7	11-2-51	ISSUED FOR CONSTRUCTION
8	11-2-51	ISSUED FOR CONSTRUCTION
9	11-2-51	ISSUED FOR CONSTRUCTION
10	11-2-51	ISSUED FOR CONSTRUCTION

RIDS

8303300537

