

..28

..28

..27

..27

..26

..26

..25

..25

..24

..24

8.5

8.5"

11

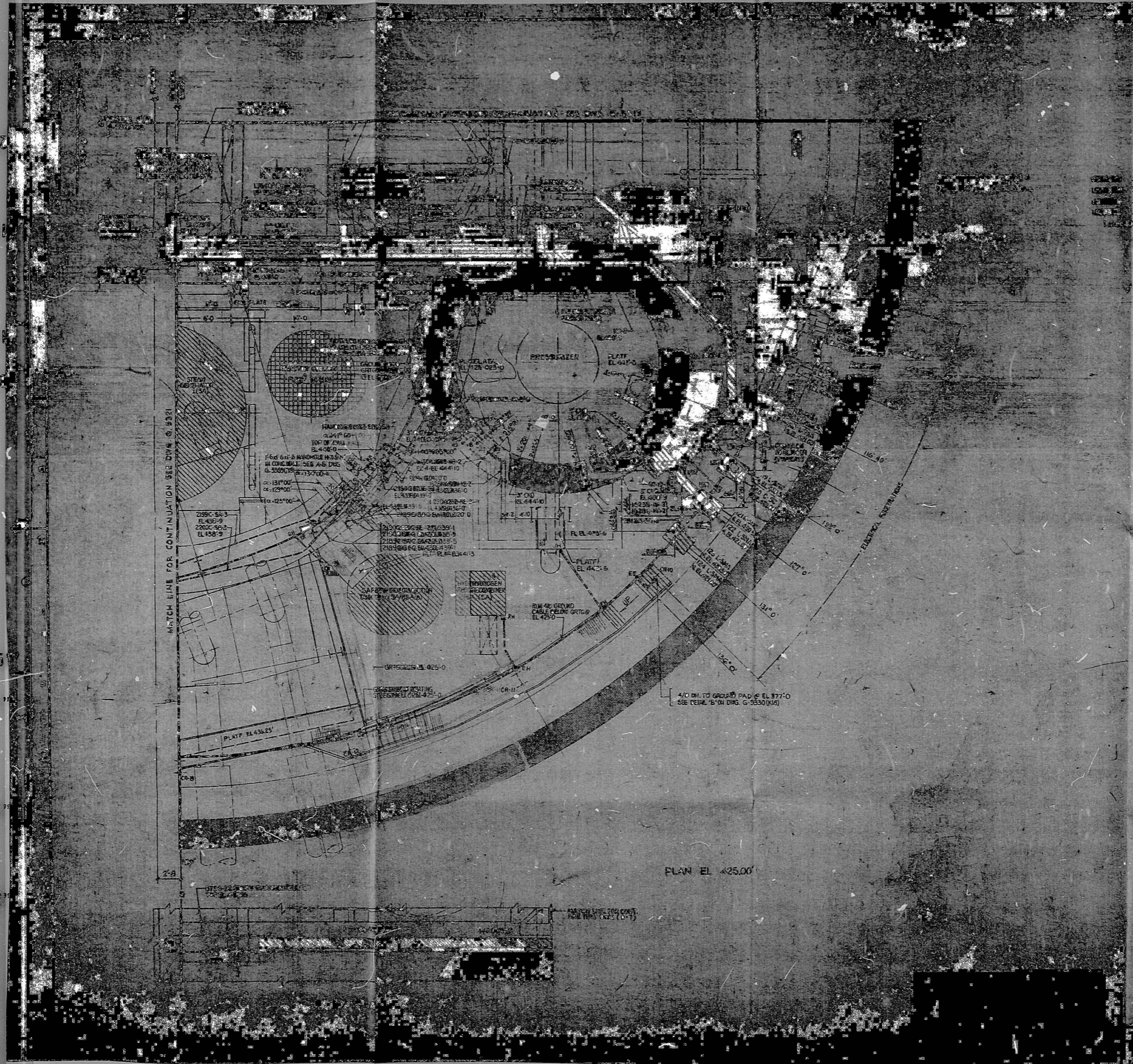
11"

17

17"

22

22"



435-2
437-2
439-2
441-2
443-2

NOTES:
 1. PER GENERAL NOTES, SYMBOLS & REFERENCES, ETC.
 SEE DWG. G-5025.

THIS DRAWING CONTAINS:
 CONSTRUCTION CONTRACT NO. 253
 THE SCOPE OF THE 253 CONTRACT IS FOR THE
 LOCATION OF ALL EXPOSED CONDUITS, TRAYS
 AND PULL SLEEVES. FOR FURTHER DETAILS SEE
 CONSTRUCTION SPECIFICATIONS.

WORK THIS DRAWING WITH (DWG. G-5320) & (5321)
 (CONDUIT INSTALLATION LIST DIS).

THIS DWG. IS TO BE USED FOR INSTALLATION OF
 EXPOSED CONDUITS, PULL BOXES & TRAYS ONLY.
 ONLY FOR ALL OTHER ELECTRICAL INSTALLATIONS
 REFER TO DWG. G-5320.

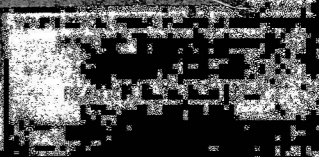
THIS DWG. SHOWS ALL APPROVED AS
 CHANGE NOTICES RECEIVED UP TO 7-15-51

APPROVED
 FOR
 CONSTRUCTION



POOR ORIGINAL

PRG
 PERTON
 BOARD



PLAN EL. 425.00

57

RIDS

8303300S15

