

34

34

22

22

17

17

11

11

58

58

8.5

8.5

11

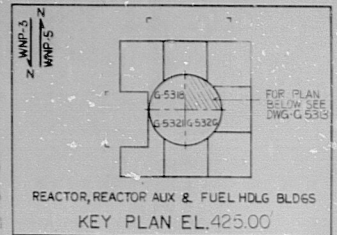
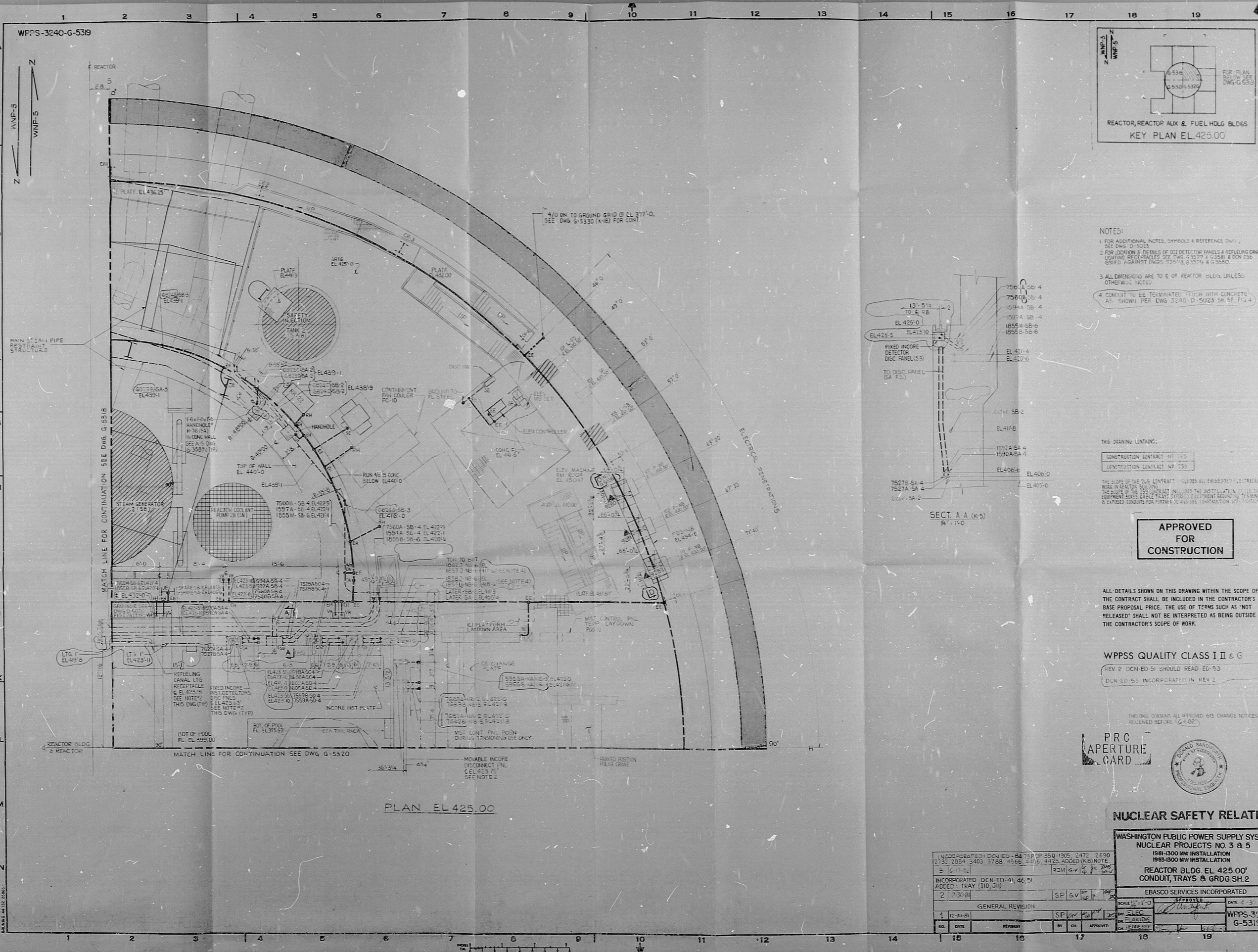
11

17

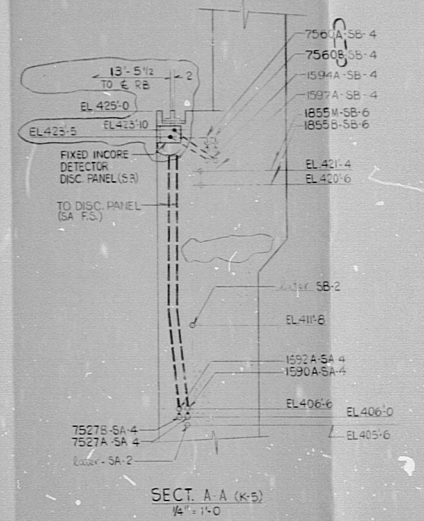
17

22

22



- NOTES:
- FOR ADDITIONAL NOTES, SYMBOLS & REFERENCE DWG., SEE DWG. D-3033.
  - FOR LOCATION & DETAILS OF FID DETECTOR PANELS & REFUELING CANAL LIGHTING RECEPTACLES SEE DWG. G-5320 & DCM 236. SYMBOLS AGAINST DWGS. 23612, G-5320 & G-5320.
  - ALL DIMENSIONS ARE TO C.E. OF REACTOR BLDG. UNLESS OTHERWISE NOTED.
  - CONCRETE TO BE TERMINATED WITH CONCRETE AS SHOWN PER DWG. 3240-D-5023 SH. SF. FIG. 4.



THIS DRAWING CONTAINS:

CONSTRUCTION CONTRACT NO. 100

CONSTRUCTION CONTRACT NO. 100

THE SCOPE OF THIS CONTRACT INCLUDES ALL EMBEDDED ELECTRICAL WORK IN REACTOR BLDG. & FUEL BLDG. AS SHOWN IN THIS DRAWING. EQUIPMENT SUPPLIERS SHALL VERIFY ALL EQUIPMENT IS IN ACCORDANCE WITH THE DRAWING. CONTACTS FOR FINISH & COORDINATION SEE CONSTRUCTION 177. ADDITIONAL NOTES:

**APPROVED FOR CONSTRUCTION**

ALL DETAILS SHOWN ON THIS DRAWING WITHIN THE SCOPE OF THE CONTRACT SHALL BE INCLUDED IN THE CONTRACTOR'S BASE PROPOSAL PRICE. THE USE OF TERMS SUCH AS "NOT RELEASED" SHALL NOT BE INTERPRETED AS BEING OUTSIDE THE CONTRACTOR'S SCOPE OF WORK.

WPSS QUALITY CLASS II & G

REV 2 DCM ED-51 SHOULD READ ED-53

DCM ED 53 INCORPORATED IN REV 2

THIS DWG. CONTAINS ALL WRITTEN 615 CHANGE NOTICES RECEIVED BEFORE 6-1-82

PRC APERTURE CARD



**NUCLEAR SAFETY RELATED**

WASHINGTON PUBLIC POWER SUPPLY SYSTEM  
 NUCLEAR PROJECTS NO. 3 & 5  
 1984-1985 MW INSTALLATION  
 1985-1986 MW INSTALLATION  
 REACTOR BLDG. EL. 425.00'  
 CONDUIT, TRAYS & GRDG. SH. 2

INCORPORATED DCM ED - 84781P 350-1905, 2475, 2690, 2735, 2884, 3403, 3788, 4666, 4716, 4725, ADDED (K) NOTE 2	DATE: 12-11-81	BY: [Signature]	APPROVED: [Signature]
INCORPORATED DCM ED-41, 46, 51, ADDED TRAY (110, 111)	DATE: 7-30-81	BY: [Signature]	APPROVED: [Signature]
GENERAL REVISION			
1	12-21-81	BY: [Signature]	APPROVED: [Signature]
NO.	DATE	REVISION	BY

SCALE: 1" = 1'-0"	DATE: 4-83
PROJECT: WPSS-3240	DATE: 4-83
DWG. NO.: G-5319	DATE: 4-83



**RIDS**

8303390506

