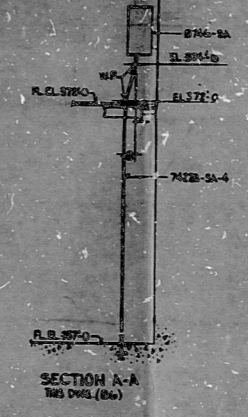
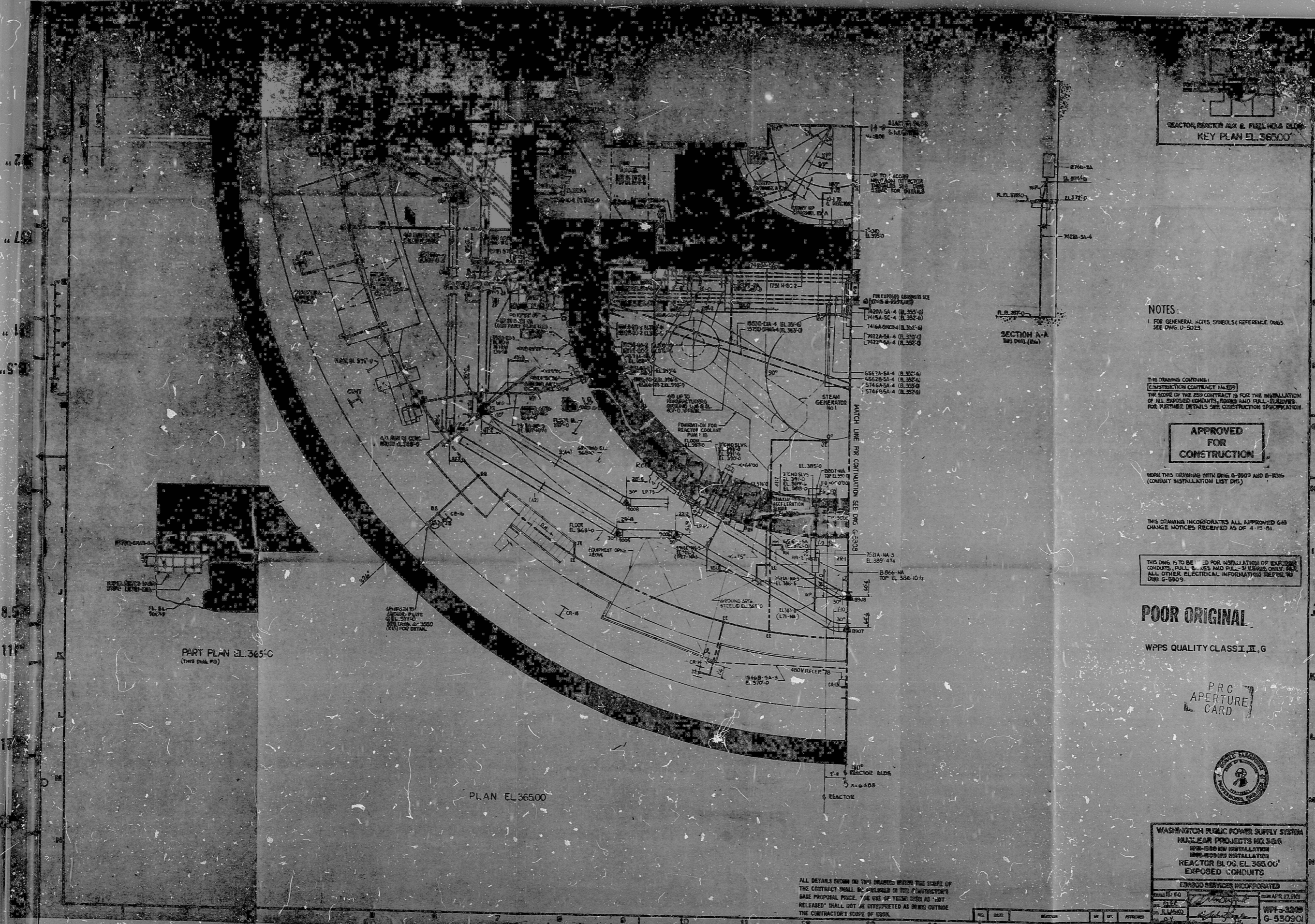


34

34



NOTES:
 1. FOR GENERAL NOTES, SYMBOLS & REFERENCE DWGS SEE DWG. D-5023.

THIS DRAWING CONTAINS:
 CONSTRUCTION CONTRACT NO. 100
 THE SCOPE OF THIS CONTRACT IS FOR THE INSTALLATION OF ALL EXPOSED CONDUITS, RINGS AND PULL-LEADS FOR FURTHER DETAILS SEE CONSTRUCTION SPECIFICATION.

APPROVED FOR CONSTRUCTION

WORK THIS DRAWING WITH DWGS G-5989 AND G-5986 (CONDUIT INSTALLATION LIST DTS)

THIS DRAWING INCORPORATES ALL APPROVED GNS CHANGE NOTICES RECEIVED AS OF 4-15-51.

THIS DWG IS TO BE USED FOR INSTALLATION OF EXPOSED CONDUITS, PULL-LEADS AND PULL-STRINGS ONLY. ALL OTHER ELECTRICAL INFORMATION REFER TO DWG. G-5989.

POOR ORIGINAL

WPPS QUALITY CLASS II, G

PRC APERTURE CARD



WASHINGTON PUBLIC POWER SUPPLY SYSTEM
 NUCLEAR PROJECTS NO. 368
 1950-1950 R&I INSTALLATION
 1950-1950 R&I INSTALLATION
 REACTOR BLDG. EL. 365.00
 EXPOSED CONDUITS

DATE	BY	CHKD	APPROVED
10/15/51	[Signature]	[Signature]	[Signature]
WPPS-3200			G-5989Q

ALL DETAILS SHOWN ON THIS DRAWING WITHIN THE SCOPE OF THE CONTRACT SHALL BE PERFORMED BY THE CONTRACTOR'S BEST PERSONNEL. THE USE OF TERMS SUCH AS "NOT RELEASED" SHALL NOT BE INTERPRETED AS BEING OUTSIDE THE CONTRACTOR'S SCOPE OF WORK.

1	2	3	4	5	6	7	8	9	10	11	12	13	14	15	16	17	18	19	20
---	---	---	---	---	---	---	---	---	----	----	----	----	----	----	----	----	----	----	----

8.5

8.5

11

11

17

17

22

PART PLAN EL 365-C
 (THIS DWG. IS)

PLAN EL 365.00

REACTOR BLDG.
 5 X 16.408
 REACTOR

RIDS

803290870

