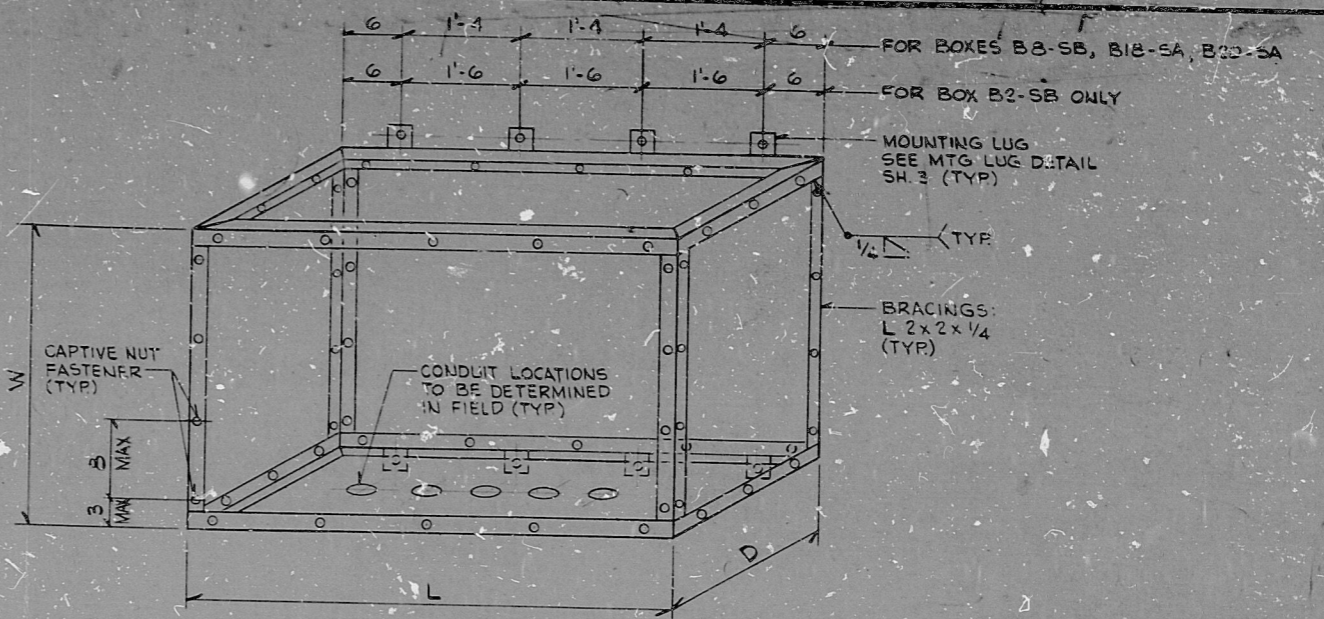


**TYPE III A**

NEMA TYPE 2  
INDOOR PAD MOUNTED  
NOTES: 1. 2 SIDES, FRONT & TOP SHOWN REMOVED  
2. FOR BOXES B96-SB, B104-SB & B105-SB ONLY  
3. BOX BRACINGS TO BE INSTALLED ON INTERNAL SIDE OF BOX



**TYPE IA**

NEMA TYPE 2  
INDOOR SURFACE MOUNTED  
NOTES: 1. 2 SIDES, FRONT & TOP SHOWN REMOVED  
2. FOR BOXES B2-SB, B8-SB & B18-SA & B20-SA ONLY  
3. BOX BRACINGS TO BE INSTALLED ON INTERNAL SIDE OF BOX

INCHES  
0 1 2 3 4 5

PRO APERTURE CARD

5		EBASCO SERVICES INCORPORATED		NUCLEAR SAFETY RELATED		WPPSS QUALITY CLASS II B6	
4		DIV. ELEC. DR. WD		WASHINGTON PUBLIC POWER SUPPLY SYSTEM		WPPS-3240	
3		CH. K ENG		NUCLEAR PROJECTS NO. 3 & 5		D-5033	
2		DATE DEC 1, 1980		BOX DETAILS		SHEET 3M	
1		REV. DATE BY APPROVED					

8.5"  
11"  
8.5"  
17"

