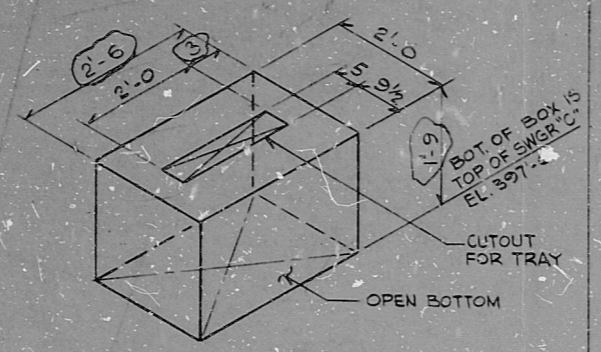


B 427-NA  
SCALE: 1/2" = 1'-0"



B 220-NA  
SCALE: 1/2" = 1'-0"

PRC  
APERTURE  
CARD

NOTE:  
1. FOR BOX BRACINGS SEE BOX TYPE V DETAIL SH. 3

5				
4				
3				
2	3-6-81	S.P.	KEG	WPS
1	12-1-80	WD	LM	9/10/80
REV	DATE	BY	APPROVED	

EBASCO SERVICES INCORPORATED  
DIV. ELEC. DR. WD.  
CH. K. ENG  
DATE OCT. 1, 1980

WASHINGTON PUBLIC POWER  
SUPPLY SYSTEM  
NUCLEAR PROJECTS NO. 3 & 5  
BOX DETAILS  
TRAY BOX DETAILS

WPPSS QUALITY CLASS I&G  
WPPS-3240  
D-5033  
SHEET 36



**RIDS**

803290688

