

**NOTES**

1. FOR GENERAL NOTES, SYMBOLS & REFERENCE DWGS. SEE DWG. D-5023.
2. WORK THIS DRAWING WITH DWGS. G-5456 & G-5479.
3. THIS DRAWING IS A REPRODUCTION OF DWG. G-5456 AND IS VALID ONLY FOR CAND & BOX SUPPORT INFORMATION. FOR ALL OTHER ELECTRICAL INFORMATION REFER TO DWG. G-5456.

THIS DRAWING CONTAINS:  
CONSTRUCTION CONTRACT NO. 253

THE SCOPE OF THE 253 CONTRACT IS FOR THE LOCATION OF CONDUITS & BOY SEISMIC SUPPORTS. FOR INSTALLATION & FABRICATION DETAILS REFER TO STRUCTURAL DWG. G-5479. FOR FURTHER DETAILS SEE CONSTRUCTION SPECIFICATIONS.

**APPROVED FOR CONSTRUCTION**

THIS DWG. INCORPORATES ALL APPROVED 613 CHANGE NOTICES RECEIVED AS OF 6-19-91.

WPPSS QUALITY CLASS 1

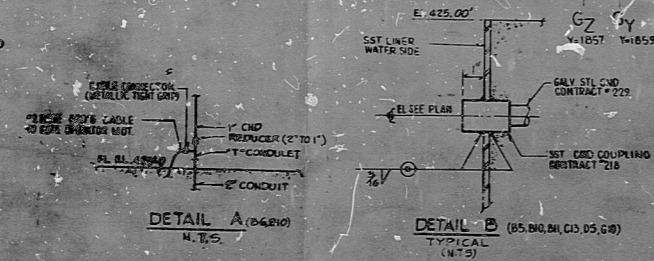


PRO APERTURE CARD

**NUCLEAR SAFETY RELATED**

WASHINGTON PUBLIC POWER SUPPLY SYSTEM  
NUCLEAR PROJECTS NO. 3 & 5  
1983-8500 NEW INSTALLATION  
1983-8500 NEW INSTALLATION  
FUEL HANDLING BLDG. EL. 425.00'  
CONDUIT SEISMIC SUPPORTS SH.4

ENGASCO SERVICES INCORPORATED  
DATE: JUNE 30, 1991  
DWG. NO.: WPPSS-3240  
REV. NO.: G-546057



PLAN EL. 425.00

THIS DRAWING IS A REPRODUCTION OF DWG. G-5456 AND IS VALID ONLY FOR CAND & BOX SUPPORT INFORMATION. FOR ALL OTHER ELECTRICAL INFORMATION REFER TO DWG. G-5456.

NO.	DATE	BY	CHKD.	APPROVED
1				
2				
3				
4				
5				
6				
7				
8				
9				
10				
11				
12				
13				
14				
15				
16				
17				
18				

**RIDS**

8303290637

