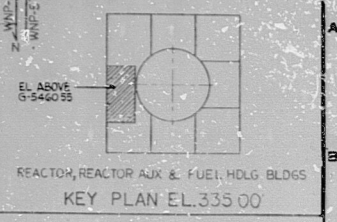
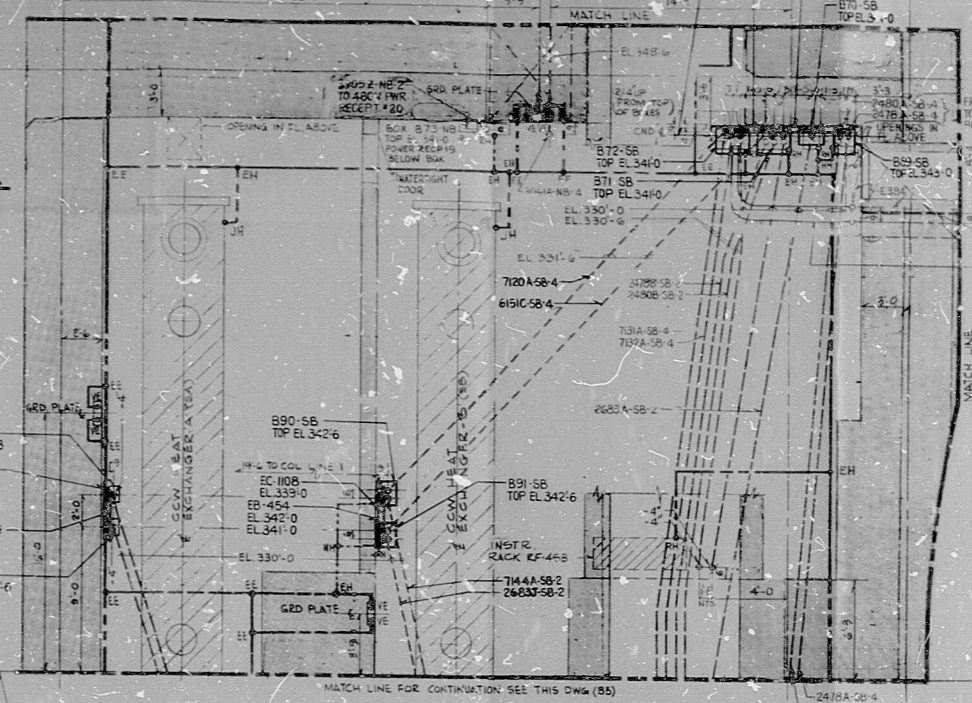
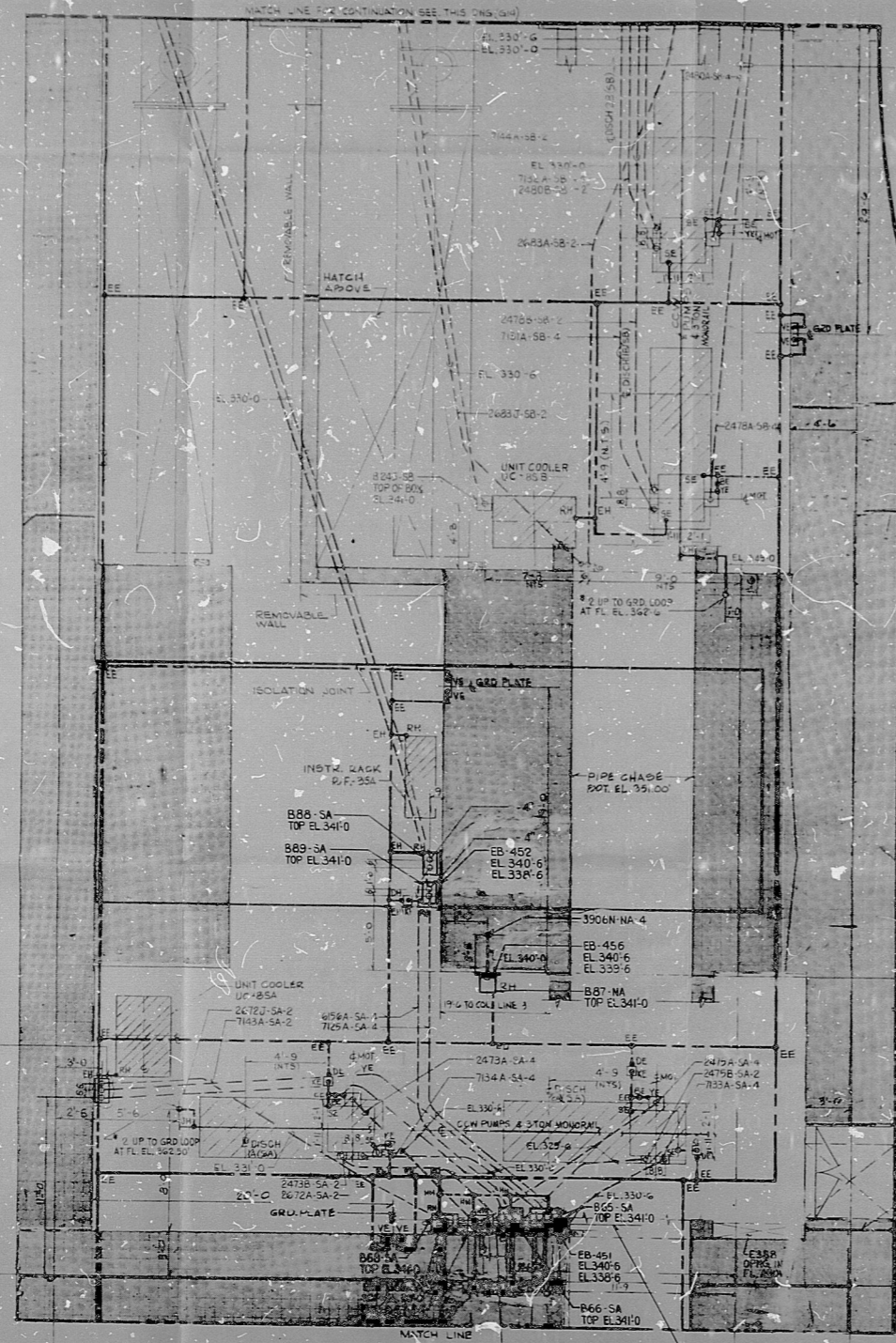


WPPS-3240-G-546054

Grid lines A through N and 1 through 19. Includes north arrow and WNP-3, WNP-5 labels.



NOTES
1. FOR GENERAL NOTES, SYMBOLS & REFERENCE DWGS SEE DWG. D-5023
2. WORK THIS DRAWING WITH G-5450, G-5453, G-54605B & G-3479.
3. THIS DRAWING IS A REPRODUCTION OF DWG. G-5450 AND IS VALID ONLY FOR CONDUIT & BOX SUPPORT INFORMATION. FOR ALL OTHER ELECTRICAL INFORMATION REFER TO DWG. G-5450.

THIS DRAWING CONTAINS:
CONSTRUCTION CONTRACT NO. 253
THE SCOPE OF THE 253 CONTRACT IS FOR THE LOCATION OF CONDUITS & BOX SEISMIC SUPPORTS FOR INSTALLATION & FABRICATION DETAILS REFER TO STRUCTURAL DWG. G-3479. FOR FURTHER DETAILS SEE CONSTRUCTION SPECIFICATIONS.

APPROVED FOR CONSTRUCTION

PRO APERTURE CARD

WPPSS QUALITY CLASS I

F APERTURE CARD



NUCLEAR SAFETY RELATED
WASHINGTON PUBLIC POWER SUPPLY SYSTEM
NUCLEAR PROJECTS NO. 38.5
1981-2000 MW INSTALLATION
1983-2000 MW INSTALLATION
FUEL HANDLING BLDG. EL. 335.00'
CONDUIT SEISMIC SUPPORTS SH.1

EBASCO SERVICES, INCORPORATED
DATE: JUNE 20, 1981
WPPS-3240 G-546054

ALL DETAILS SHOWN ON THIS DRAWING WITHIN THE SCOPE OF THIS CONTRACT SHALL BE PROVIDED BY THE CONTRACTOR'S BASE FURNISHING PRICE. THE USE OF TERMS SUCH AS 'TYPICAL' SHALL NOT BE INTERPRETED AS BEING OUTSIDE THE CONTRACTOR'S SCOPE OF WORK.

Table with columns: NO., DATE, REVISION, BY, CHK, APPROVED. Includes a signature and date.



RIDS

8303290633

