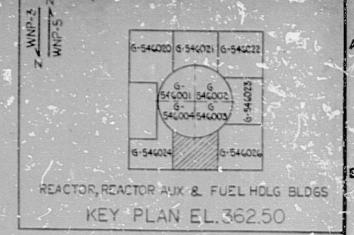
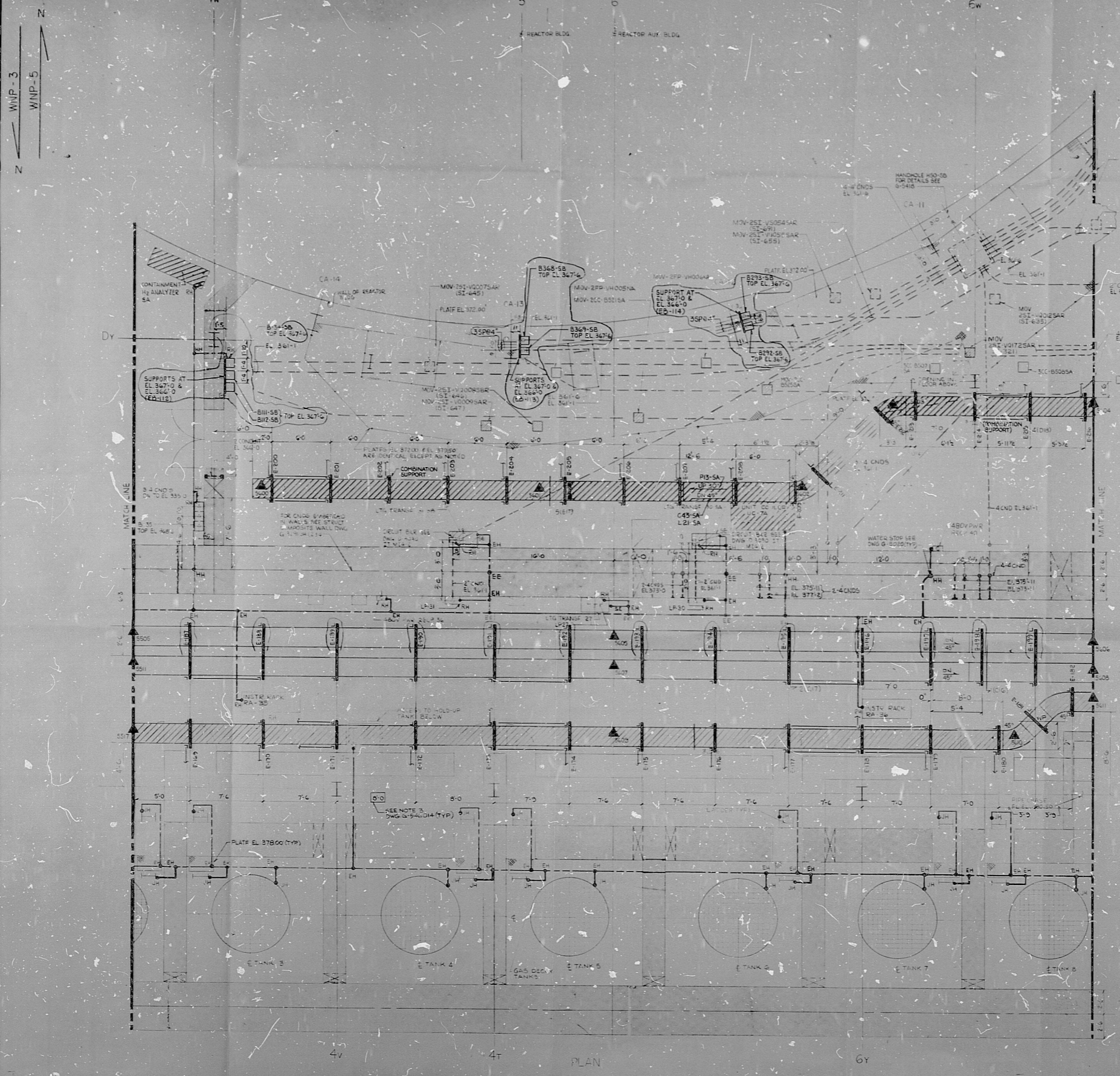


WPPSS-3240-G-546025



03-5A	EL. 362.0	03-5A	EL. 364.0
03-5A	EL. 363.0	03-5A	EL. 364.0
03-5A	EL. 362.0	03-5A	EL. 364.0
03-5A	EL. 362.0	03-5A	EL. 364.0
03-5A	EL. 362.0	03-5A	EL. 364.0
03-5A	EL. 362.0	03-5A	EL. 364.0
03-5A	EL. 362.0	03-5A	EL. 364.0
03-5A	EL. 362.0	03-5A	EL. 364.0
03-5A	EL. 362.0	03-5A	EL. 364.0
03-5A	EL. 362.0	03-5A	EL. 364.0

NOTES:
 1. FOR GENERAL NOTES, SYMBOLS & REFERENCE DWGS SEE DWG. G-5013
 2. WORK THIS DWG WITH DWGS G-5371 & G-5476 (S)
 3. THIS DRAWING IS A REPRODUCTION OF DWG G-5371 AND IS VALID ONLY FOR CND SUPPORTS, BOX SUPPORTS & CABLE TRAY SUPPORTS INFORMATION. FOR ALL OTHER ELECTRICAL INFORMATION, REFER TO DWG. G-5476 (S)

THIS DRAWING CONTAINS:
 CONSTRUCTION CONTRACT NO. 225
 CONSTRUCTION CONTRACT NO. 225

THE SCOPE OF THE 225 CONTRACT IS FOR THE LOCATION OF CABLE TRAY SEISMIC SUPPORTS FOR INSTALLATION DETAILS REFER TO STRUCTURAL DWG. G-5476 (S).

THE SCOPE OF THE 225 CONTRACT IS FOR THE LOCATION OF CONDUIT & CROWD BOX SEISMIC SUPPORTS. FOR INSTALLATION DETAILS REFER TO STRUCTURAL DWG. G-5476 (S).

FOR FURTHER DETAILS SEE CONSTRUCTION SPECIFICATIONS.

APPROVED FOR CONSTRUCTION

THIS DRAWING INCORPORATES ALL APPROVED 613 CHANGE NOTICES RECEIVED AS OF 03-30-80.

ALL DETAILS SHOWN ON THIS DRAWING WITHIN THE SCOPE OF THE CONTRACT SHALL BE INCLUDED IN THE CONTRACTOR'S BASE PROPOSAL PRICE. THE USE OF TERMS SUCH AS "NOT RELEASED" SHALL NOT BE INTERPRETED AS BEING OUTSIDE THE CONTRACTOR'S SCOPE OF WORK.

WPPSS QUALITY CLASS I



NUCLEAR SAFETY RELATED

WASHINGTON PUBLIC POWER SUPPLY SYSTEM
 NUCLEAR PROJECTS NO. 385
 1981-1989 MW INSTALLATION
 1983-1986 MW INSTALLATION
 REACTOR AUXILIARY BLDG EL. 362.50'
 CABLE TRAYS & CONDUITS
 SEISMIC SUPPORTS SH. 6

EBASCO SERVICES INCORPORATED

NO.	DATE	REVISION	BY	CHK	APPROVED
1	11-21-76				
2	03-15-80				

DATE 1-31-78
 WPPSS-3240
 G-546025

ADDED (F2/F7 E10) CND BOXES & SUPPORTS (179) CONST. CONTRACT NO. 225 - REVISED (G-5013) WPPSS-3240-G-546025	DATE 11-21-76	BY [Signature]	CHK [Signature]	APPROVED [Signature]
ADDED (F2/F7 E10) CND BOXES & SUPPORTS (179) CONST. CONTRACT NO. 225 - REVISED (G-5013) WPPSS-3240-G-546025	DATE 03-15-80	BY [Signature]	CHK [Signature]	APPROVED [Signature]

RIDS

8303250060

