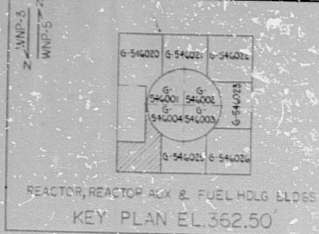
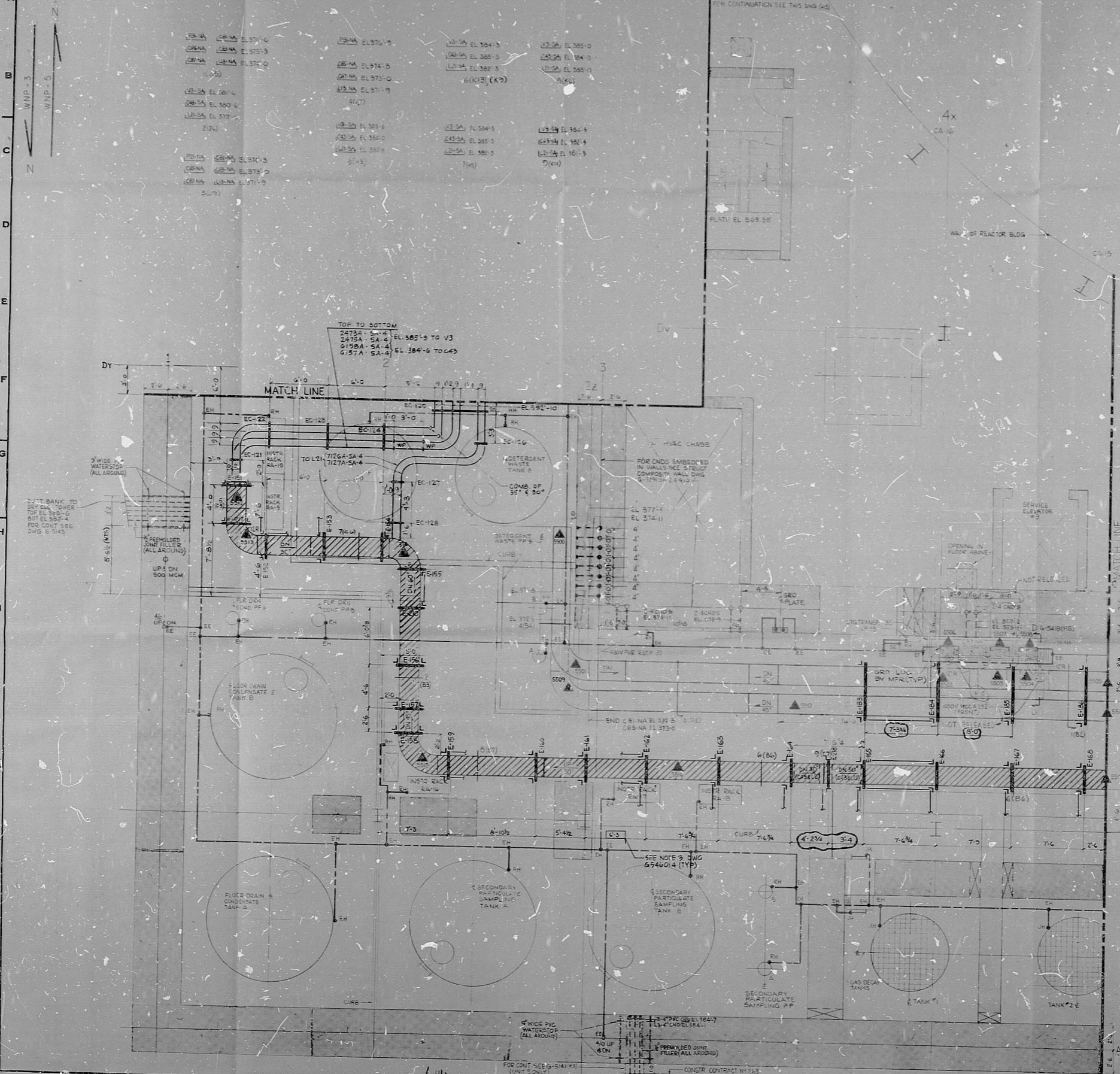


WPPSS-3240-C-546024



NOTES:
 1. FOR GENERAL NOTES, SYMBOLS & REFERENCE DWGS. SEE DWG. G-5013.
 2. FROM THIS DRAWING WITH DWG'S G-5870 AND G-7476(1).
 3. THIS DRAWING IS A REPRODUCTION OF DWG. G-5870 AND IS VALID ONLY FOR CND SUPPORTS, BOX SUPPORTS, & CABLE TRAY SUPPORTS INFORMATION. FOR ALL OTHER ELECTRICAL INFORMATION, REFER TO DWG. G-5870.

THIS DRAWING CONTAINS:
 CONSTRUCTION CONTRACT NO. 229
 CONSTRUCTION CONTRACT NO. 289

THE SCOPE OF THE 229 CONTRACT IS FOR THE LOCATION OF CABLE TRAY SEISMIC SUPPORTS. FOR INSTALLATION DETAILS REFER TO STRUCTURAL DWG. G-5875(4).
 THE SCOPE OF THE 289 CONTRACT IS FOR THE LOCATION OF CONDUIT & CONDUIT BOX SEISMIC SUPPORTS. FOR INSTALLATION DETAILS REFER TO STRUCTURAL DWG. G-5875(4).
 FOR FURTHER DETAILS SEE CONSTRUCTION SPECIFICATIONS.

APPROVED FOR CONSTRUCTION
 PRC APERTURE CARD

THIS DRAWING INCORPORATES ALL APPROVED 615 CHANGE NOTICES RECEIVED AS OF 10-25-81

ALL DETAILS SHOWN ON THIS DRAWING WITHIN THE SCOPE OF THE CONTRACT SHALL BE INCLUDED IN THE CONTRACTOR'S LATEST PROPOSAL PRICE. THE USE OF TERMS SUCH AS "NOT RELEASED" SHALL NOT BE INTERPRETED AS BEING OUTSIDE THE CONTRACTOR'S SCOPE OF WORK.

WPPSS QUALITY CLASS I



NUCLEAR SAFETY RELATED
 WASHINGTON PUBLIC POWER SUPPLY SYSTEM
 NUCLEAR PROJECTS NO. 3 & 5
 1981-1900 MW INSTALLATION
 1983-2000 MW INSTALLATION
 REACTOR AUXILIARY BLDG. EL. 362.50'
 CABLE TRAYS & CONDUITS
 SEISMIC SUPPORTS SH.5

INCORPORATED FOR EC-BLDCP-05-004	DATE: 1-31-78
3 1114-B1	BY: [Signature]
ADDED: (2) 1/2" (1.5) TRAY SUPPORTS; (1) NOTE (G-77) (A) CND & BOX SIZES; (1) CONST. CONTRACT NO. 113	DATE: 1-31-78
REVISED: (2) 1/2" (1.5) TRAY SUPPORTS; (1) NOTE (G-77) (A) CND & BOX SIZES; (1) CONST. CONTRACT NO. 113	DATE: 1-31-78
2 1114-B2	BY: [Signature]
REVISED: (1) 1/2" (1.5) TRAY SUPPORTS; (1) NOTE (G-77) (A) CND & BOX SIZES; (1) CONST. CONTRACT NO. 113	DATE: 1-31-78
1 1114-B1	BY: [Signature]
REVISED: (1) 1/2" (1.5) TRAY SUPPORTS; (1) NOTE (G-77) (A) CND & BOX SIZES; (1) CONST. CONTRACT NO. 113	DATE: 1-31-78

CONSTR. CONTRACT NO. 229
 CONSTR. CONTRACT NO. 289
 PLAN

RIDS

8303240347

