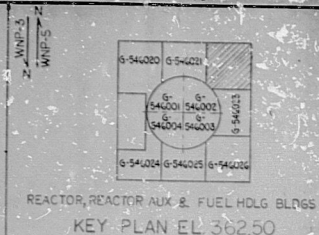
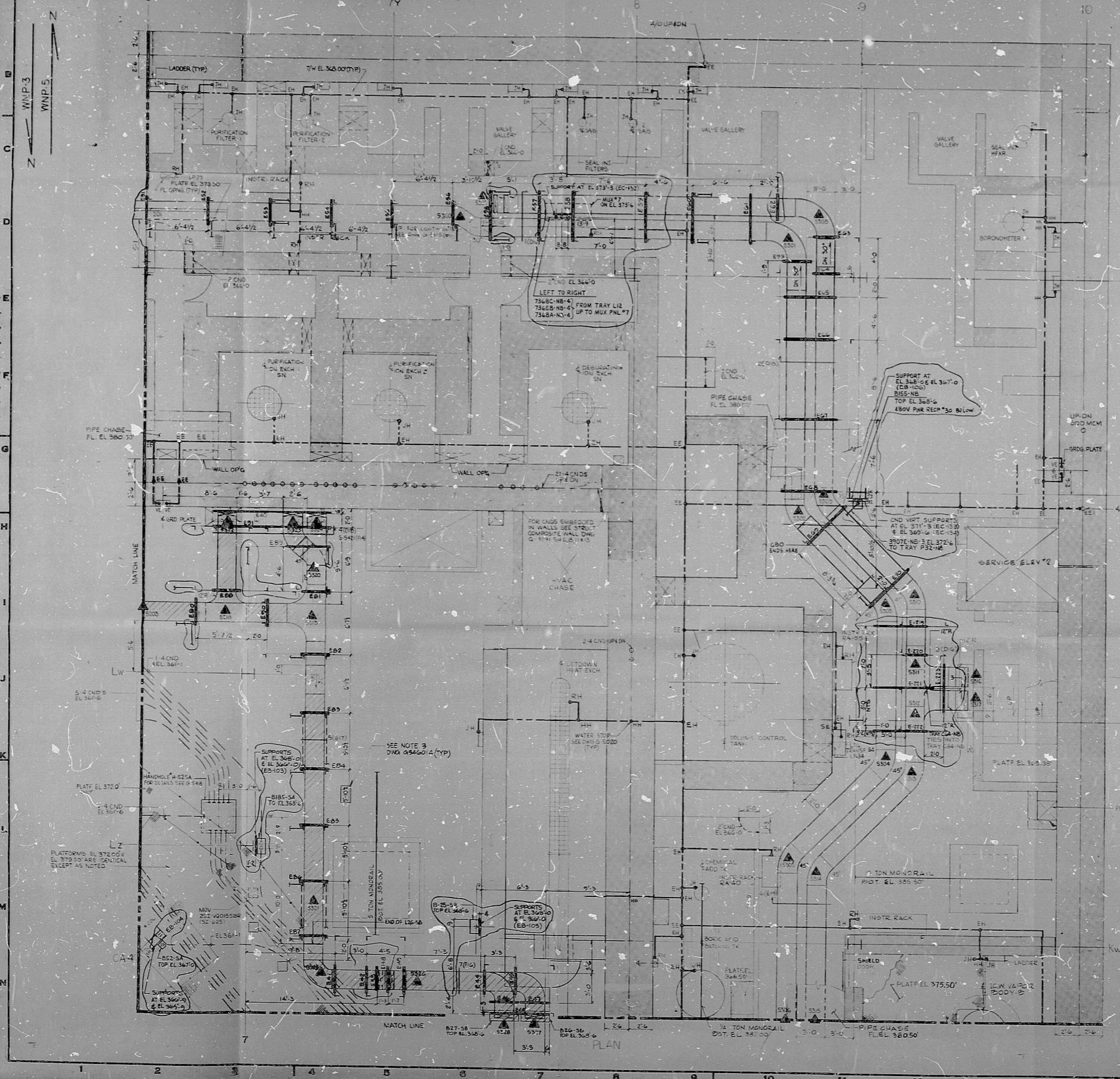


WPPS-3240-G-540022



CONDUIT (CND) EL 372.0	CABLE TRAY (CAB) EL 372.0
CONDUIT (CND) EL 370.9	CABLE TRAY (CAB) EL 370.9
CONDUIT (CND) EL 369.9	CABLE TRAY (CAB) EL 369.9
CONDUIT (CND) EL 368.9	CABLE TRAY (CAB) EL 368.9
CONDUIT (CND) EL 367.9	CABLE TRAY (CAB) EL 367.9
CONDUIT (CND) EL 366.9	CABLE TRAY (CAB) EL 366.9
CONDUIT (CND) EL 365.9	CABLE TRAY (CAB) EL 365.9
CONDUIT (CND) EL 364.9	CABLE TRAY (CAB) EL 364.9
CONDUIT (CND) EL 363.9	CABLE TRAY (CAB) EL 363.9
CONDUIT (CND) EL 362.9	CABLE TRAY (CAB) EL 362.9

**NOTES:**  
 1. FOR GENERAL NOTES, SYMBOLS & REFERENCE DWGS SEE DWG. D-5029.  
 2. WORK THIS DWG WITH DWGS 5-5368 & 5-5476.  
 3. THIS DRAWING IS A REPRODUCTION OF DWG. G-5508 AND IS VALID ONLY FOR CND SUPPORTS, BOX SUPPORTS & CABLE TRAY SUPPORTS INFORMATION. FOR ALL OTHER ELECTRICAL INFORMATION, REFER TO DWG. 5-5368.

**THIS DRAWING CONTAINS:**  
 CONSTRUCTION CONTRACT NO. 229  
 CONSTRUCTION CONTRACT NO. 285

THE SCOPE OF THE 229 CONTRACT IS FOR THE LOCATION OF CABLE TRAY SEISMIC SUPPORTS. FOR INSTALLATION DETAILS, REFER TO STRUCTURAL DWG. 5-5476.  
 THE SCOPE OF THE 285 CONTRACT IS FOR THE LOCATION OF CONDUIT & CABLE BOX SEISMIC SUPPORTS. FOR INSTALLATION DETAILS, REFER TO STRUCTURAL DWG. 5-5368. FOR FURTHER DETAILS, SEE CONSTRUCTION SPECIFICATIONS.

**APPROVED FOR CONSTRUCTION**

THIS DWG INCORPORATES ALL APPROVED 612 CHANGE NOTICES RECEIVED AS OF 8-30-78.

ALL DETAILS SHOWN ON THIS DRAWING WITHIN THE SCOPE OF THE CONTRACT SHALL BE INCLUDED IN THE CONTRACTOR'S BISE PROPOSAL PRICE. THE USE OF TERMS SUCH AS "NOT RELEASED" SHALL NOT BE INTERPRETED AS BEING OUTSIDE THE CONTRACTOR'S SCOPE OF WORK.

INFORMATION REQUIRED TO COMPLETE THIS DWG:  
 1. PER MEMO # 2020 WITH ATTACHED PRELIMINARY SKETCHES INDICATED PLANT AREAS WHERE SEISMIC SUPPORTS ARE REQUIRED, BASED ON THIS INFORMATION, SEISMIC SUPPORTS FOR CABLE TRAYS & CONDUITS WERE LOCATED. FINAL SKETCHED OUT SKETCHES OF THE ABOVE ARE REQUIRED TO CONFIRM THE PLANT SEISMIC AREAS.  
 2. COMPLETE CABLE & CONDUIT LIST.

WPPS QUALITY CLASS I



**PRC APERTURE CARD**  
**NUCLEAR SAFETY RELATED**

WASHINGTON PUBLIC POWER SUPPLY SYSTEM	
NUCLEAR PROJECTS NO. 385	
1981-1982 MW INSTALLATION	
1983-1984 MW INSTALLATION	
REACTOR AUXILIARY BLDG EL 362.50'	
CABLE TRAYS & CONDUITS	
SEISMIC SUPPORTS SH-3	
EASCO SERVICES INCORPORATED	
DATE: 1-31-78	DATE: 1-31-78
WPPS-3240	G-540022

**RIDS**

8303240343

