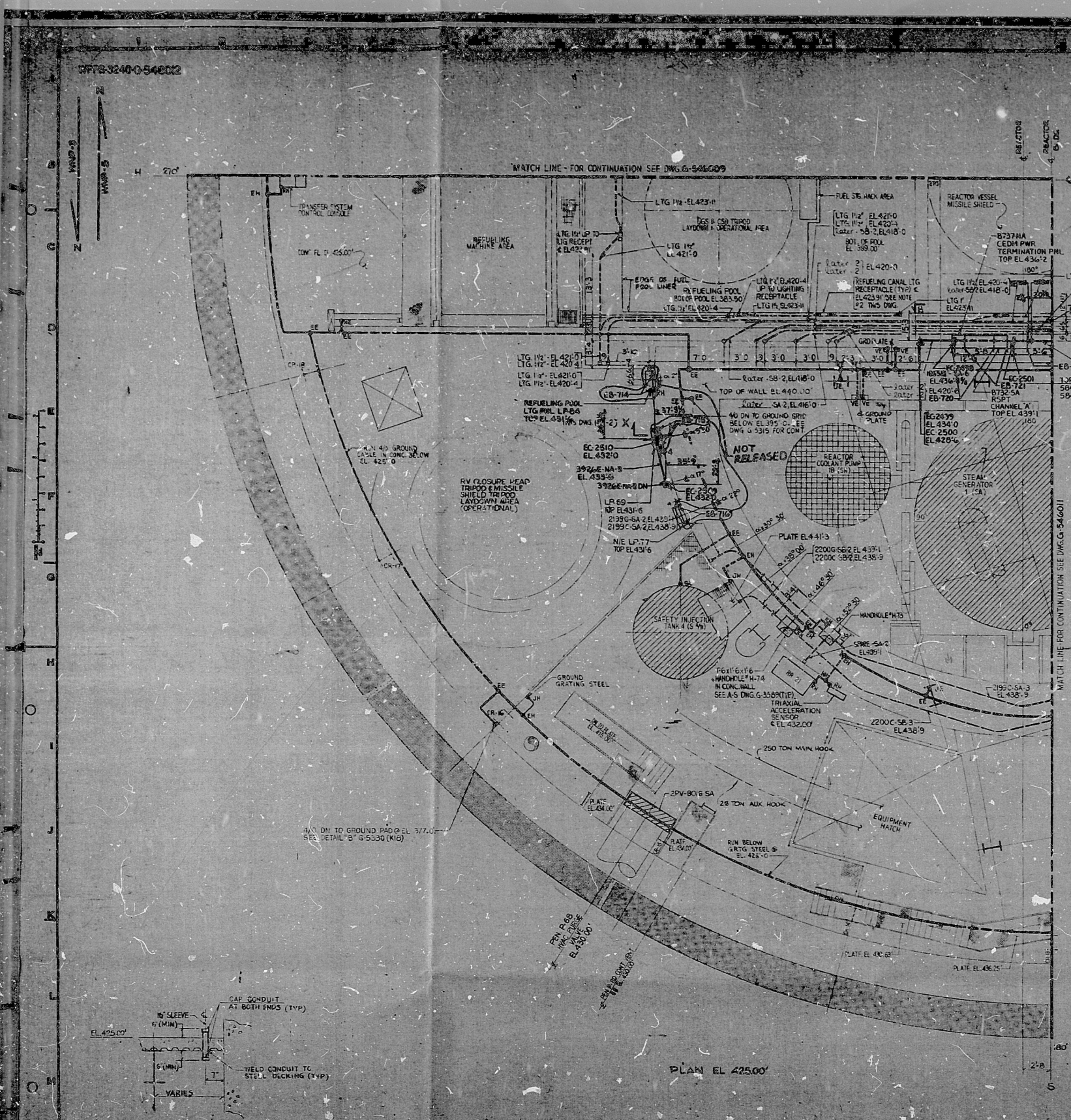
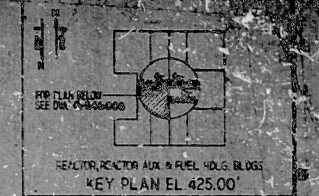
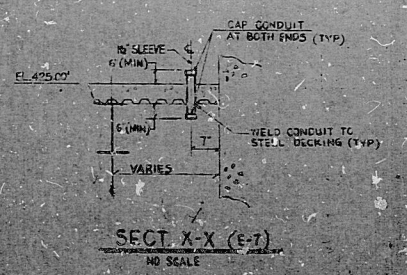


DWG NO. 3440-546012



PLAN EL 425.00'



NOTES

- 1. FOR GENERAL NOTES, SYMBOLS & REFERENCE DWGS. SEE DWG. 0-5023.
- 2. WORK THIS DWG. WITH DWGS. 0-3521 (0-5321).
- 3. THIS DWG. IS A REPRODUCTION OF DWG. 0-5321 (0-5321) AND IS VALID ONLY FOR CONDUIT & BOX SUPPORT INFORMATION. FOR ALL OTHER ELECTRICAL INFORMATION REFER TO DWG. 0-5321 (0-5321).
- 4. ALL CONDUIT SUPPORTS ARE U-BOLT TYPE SUPPORTS UNLESS OTHERWISE NOTED.
- 5. CONDUIT SUPPORT NOS. PRECEDED BY A "S" INDICATES PIPE TYPE STRAPS.

THIS DRAWING CONTAINS:
 CONSTRUCTION CONTRACT NO. 233
 THE SCOPE OF THE 299 CONTRACT IS FOR LOCATION OF CONDUIT & BOX SEISMIC SUPPORTS. FOR INSTALLATION & FABRICATION DETAILS REFER TO STRUCTURAL DWGS. 0-5495. FOR FURTHER DETAILS SEE CONSTRUCTION SPECIFICATION.

APPROVED FOR CONSTRUCTION

ALL DETAILS SHOWN ON THIS DRAWING WITHIN THE SCOPE OF THE CONTRACT SHALL BE INCLUDED IN THE CONTRACTOR'S BEST PROFESSIONAL JUDGMENT. THE USE OF TERMS SUCH AS "SHALL" SHALL NOT BE INTERPRETED AS BEING WITHIN THE CONTRACTOR'S SCOPE OF WORK.

THIS DWG. INCORPORATES ALL APPROVED G15 CHANGE NOTICES RECEIVED AS OF 7-15-61.

WPPSS QUALITY CLASS I, II, G

EBASCO
 SEP 04 1961
 CONSTRUCTION SITE



PRC
 APERTURE
 CARD

RIDS

8303240321

