

34

34

22

22

17

17

11

11

5.8

5.8

8.5

8.5

11

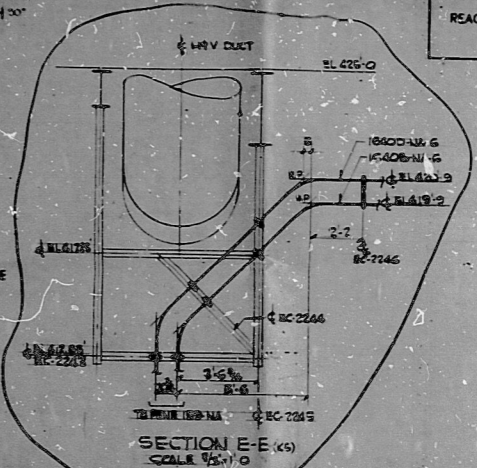
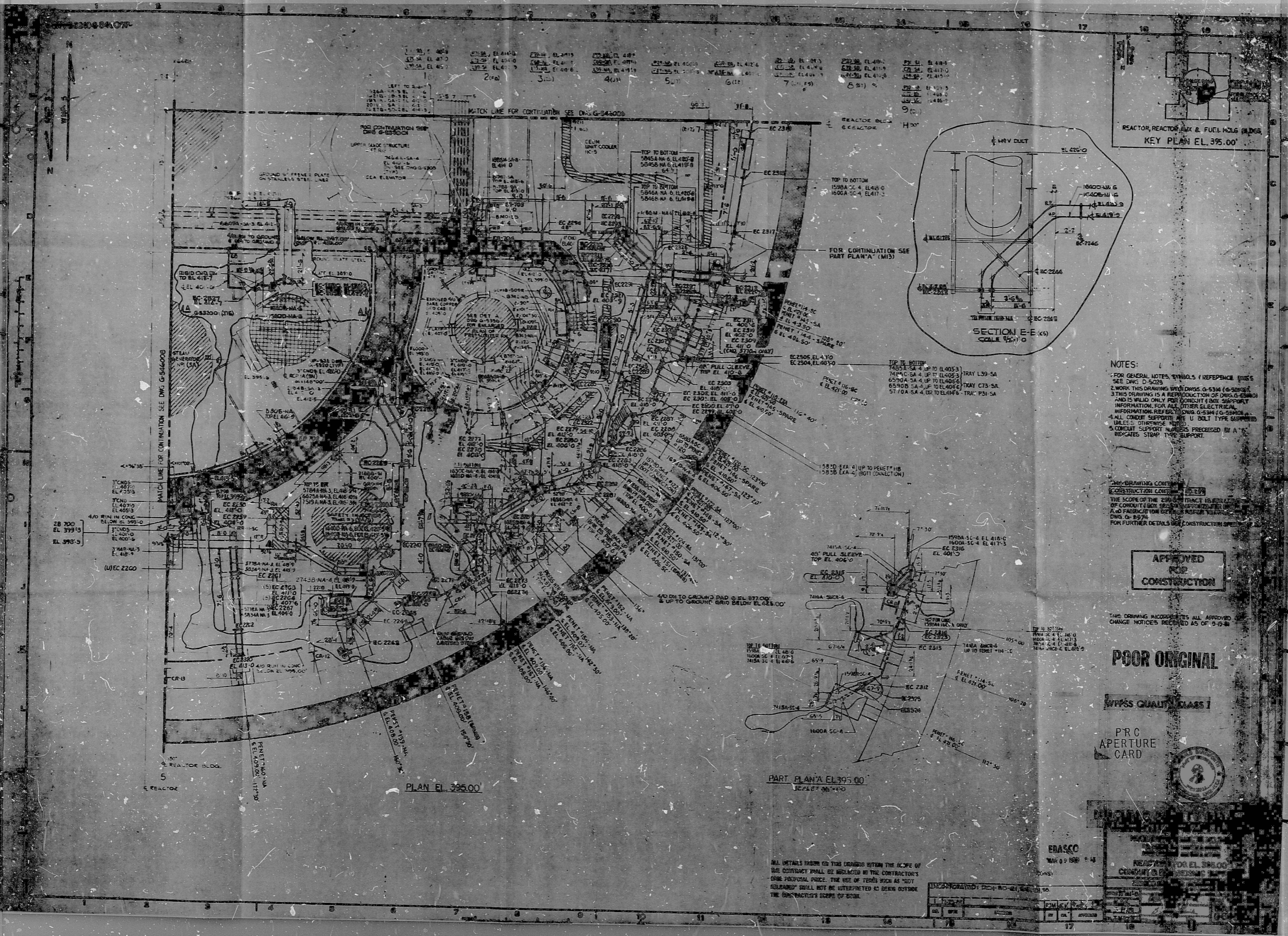
11

17

17

22

22



NOTES:

- FOR GENERAL NOTES, SYMBOLS & REFERENCE NUMBERS SEE DWG. D-5223.
- WORK THIS DRAWING WITH DWGS. G-534 (G-5300) & IS VALID ONLY FOR CONDUIT & BOLT SUPPORT INFORMATION FOR ALL OTHER ELECTRICAL INFORMATION REFER TO DWG. G-534 (G-5300).
- ALL CABLE SUPPORTS ARE U-BOLT TYPE SUPPORT UNLESS OTHERWISE NOTED.
- CONDUIT SUPPORT NUMBERS PRECEDED BY A "K" INDICATES STAMP TYPE SUPPORT.

APPROVED FOR CONSTRUCTION

THE DRAWING INCORPORATES ALL APPROVED CHANGE NOTICES RECEIVED AS OF 9-9-61

POOR ORIGINAL

WIPSS QUALITY CLASS I

PRC APERTURE CARD



BRASCO

REACTOR BUILDING ELECTRICAL

PART PLAN 'A' EL. 395.00
SCALE: 1/8" = 1'-0"

ALL DETAILS SHOWN ON THIS DRAWING WITHIN THE SCOPE OF THIS CONTRACT SHALL BE INSTALLED BY THE CONTRACTOR'S OWN PERSONAL FORCE. THE USE OF TERMS SUCH AS "NOT RELEASED" SHALL NOT BE INTERPRETED AS BEING OUTSIDE THE CONTRACTOR'S SCOPE OF WORK.

NO.	DATE	DESCRIPTION	BY	APP'D.
1	9-9-61	ISSUED FOR CONSTRUCTION		

RIDS

8303240306

