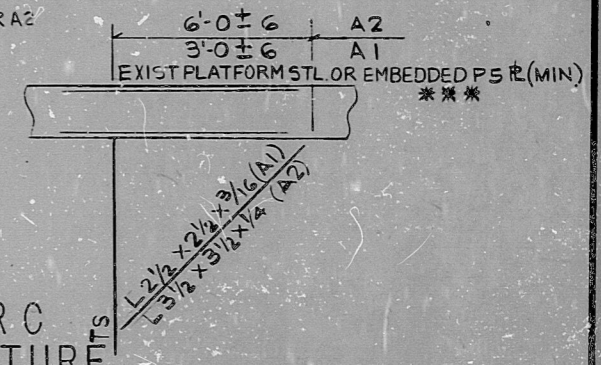
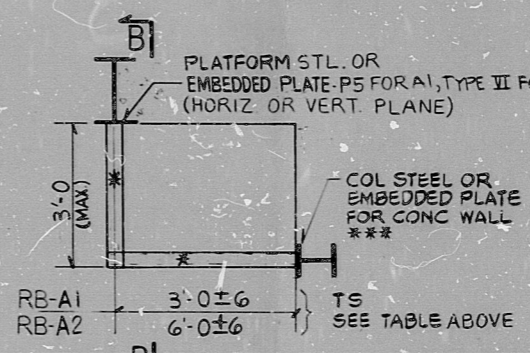


TYPE	PLATFORM STEEL AT EL 395'-0" & BELOW	PLATFORM STEEL AT EL 425'-0" & BELOW	INTERN STRUCT & CONT VSL MOUNTED UP TO EL 425'-0"
RB-Y1	1440	1150	1440
RB-Y2	1440	1150	1440

ELEVATION	MOUNTING CONDITION AT SUPPORT	TUBE SIZE		MAX CND LOAD IN LBS			
		RB-A1	RB-A2	WITH BRACING		WITHOUT BRACING	
PLATFORM @ EL 395'-0" & BELOW	HINGED (CEILING & WALL)	3/2x3/2x3/8	5x5x1/4	650	950		
	FIXED (CEILING & WALL)	3x3x3/16	4x4x3/16			480	560
PLATFORM @ EL 425'-0" & BELOW	HINGED (CEILING & WALL)	3/2x3/2x3/8	5x5x1/4	560	800		
	FIXED (CEILING & WALL)	3x3x3/16	4x4x3/16			350	300
INTERN STRUCT. & CONT. VSL MOUNTED UP TO EL 425'-0"	HINGED (CEILING & WALL, WALL & WALL)	3x3x3/16	5x5x1/4	800	1000		
	FIXED (CEILING & WALL, WALL & WALL)	3x3x3/16	4x4x3/16			220	340

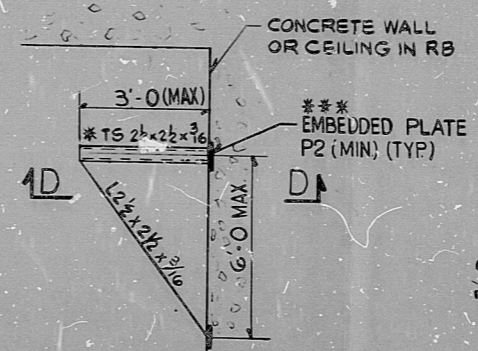


PRC APERTURE CARD

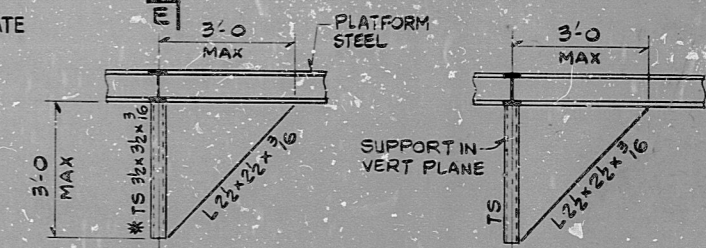
SECTION B-B (OPTIONAL) (SEE TABLE ABOVE) ***

NOTES:

- * RB-A1 OR RB-A2 AS REQ'D OR SEE OPTIONAL DETAILS SH. 55-35
- *** ATTACHMENT TO CONT VSL CLIP REF ALLOWED WHEN OPTIONAL BRG IS USED



TYPE RB-A3
MAX CND LOAD: 880 LBS (UP TO EL 425'-0")



TYPE RB-A3A
MAX CONDUIT LOAD:
UP TO EL 395'-0" - 1000 LBS
UP TO EL 425'-0" - 550 LBS

SECT 'E-E'

THIS SHEET IS FOR SEISMIC APPLICATIONS IN REACTOR BLDG AND CONDENSATE & REFUELING WATER STORAGE TANK AREA AS INDICATED IN NOTE 3, 34-9, SH, 5B.

REV. DATE BY APPROVED				EBASCO SERVICES INCORPORATED DIV. ELEC. DR. QM CH. K. ENG. DATE JULY 21 1981		WASHINGTON PUBLIC POWER SUPPLY SYSTEM NUCLEAR PROJECTS NO. 3 & 5 GENERAL NOTES, SYMBOLS AND REFERENCE DRAWINGS		WPPS-3240 D-5023 SHEET 55-30	
-----------------------	--	--	--	---	--	--	--	------------------------------------	--

NUCLEAR SAFETY RELATED WPPS QUALITY CLASS I, II & G

RDS

8303240273

