

- NOTES**
- FOR GENERAL NOTES, SYMBOLS & REFERENCE DWGS SEE DWG. D-5013
 - FOR LOCATION & DETAILS OF LIGHTING RECEPTACLES IN REFUELING CANAL, SPENT FUEL POOL & CASK LOADING POOL SEE DWGS. G-3249, G-3250, G-3251 & G-3252 & DCN-AS-236 ISSUED AGAINST THE ABOVE DWGS.

APPROVED FOR CONSTRUCTION

THIS DRAWING CONTAINS:
 CONSTRUCTION CONTRACT NO. 245
 CONSTRUCTION CONTRACT NO. 225
 CONSTRUCTION CONTRACT NO. 223
 CONSTRUCTION CONTRACT NO. 223

THE SCOPE OF THE 223 CONTRACT INCLUDES ALL EMBEDDED ELECTRICAL WORK IN WALLS AND FLOORS ABOVE EL 390.00 EXCEPT FUEL LOADING BAY.
 THE SCOPE OF THE 225 CONTRACT INCLUDES INSTALLATION OF ELECTRICAL EQUIPMENT & EMBEDDED EQUIPMENT GROUNDING TERMINATIONS WITHIN SCOPE OF CONTRACT.
 THE SCOPE OF THE 223 CONTRACT INCLUDES ALL EMBEDDED ELECTRICAL WORK IN 425.00 FLOOR SLAB OF FUEL LOADING BAY.
 THE SCOPE OF THE 225 CONTRACT INCLUDES ALL EMBEDDED ELECTRICAL WORK COVERED BY THE 223 CONTRACT.
 ALL EMBEDDED CHAS. & BOXES WITHIN SCOPE OF THIS CONTRACT FOR OTHER UTILS SEE CONSTRUCTION SPECIFICATIONS.

WORK THIS DWG. WITH DWG. B-5016 (CONDUIT INSTALLATION LIST D-15)

WPPSS QUALITY CLASS I, II, G

THIS DRAWING INCORPORATES ALL APPROVED G-13 CHANGE NOTICES RECEIVED AS OF 6-15-78

PRC APERTURE CARD

NUCLEAR SAFETY RELATED

WASHINGTON PUBLIC POWER SUPPLY SYSTEM
 NUCLEAR PROJECTS NO. 305
 1558-1900 MW INSTALLATION
 15-3-3000 MW INSTALLATION

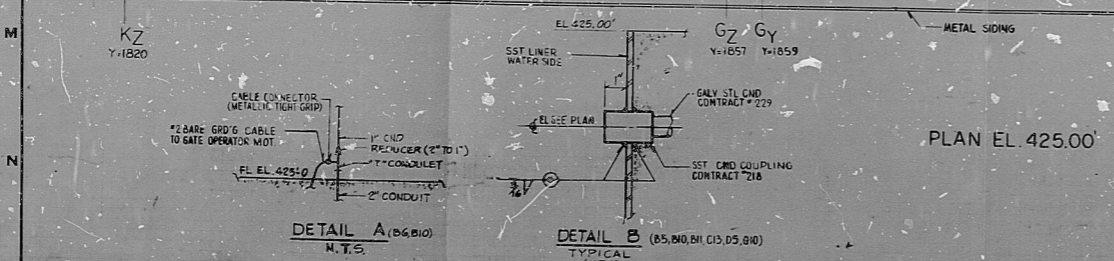
FUEL HANDLING BLDG. EL. 425.00
 CONDUIT & GRDG

NO.	DATE	BY	APPROVED
1	8-4-79		
2	10-23-79		

SCALE: 1/4" = 1'-0"

DATE: 4-5-78

WPPSS-3240
 G-5036



ALL DETAILS SHOWN ON THIS DRAWING WITHIN THE SCOPE OF THE CONTRACT SHALL BE WELDED IN THE CONTRACTOR'S SHOP. PROFESSIONAL PRINTING. THE USE OF TERMS SUCH AS 'NOT RELEASED' SHALL NOT BE INTERPRETED AS BEING OUTSIDE THE CONTRACTOR'S SCOPE OF WORK.

REVISIONS:

1. REVISIONS TO BE MADE TO THIS DRAWING SHALL BE MADE BY THE CONTRACTOR. REVISIONS TO BE MADE BY THE CONTRACTOR SHALL BE CIRCLED AND NOTED IN THE MARGINS OF THIS DRAWING. REVISIONS TO BE MADE BY THE CONTRACTOR SHALL BE CIRCLED AND NOTED IN THE MARGINS OF THIS DRAWING. REVISIONS TO BE MADE BY THE CONTRACTOR SHALL BE CIRCLED AND NOTED IN THE MARGINS OF THIS DRAWING.

RDS

8303240271

