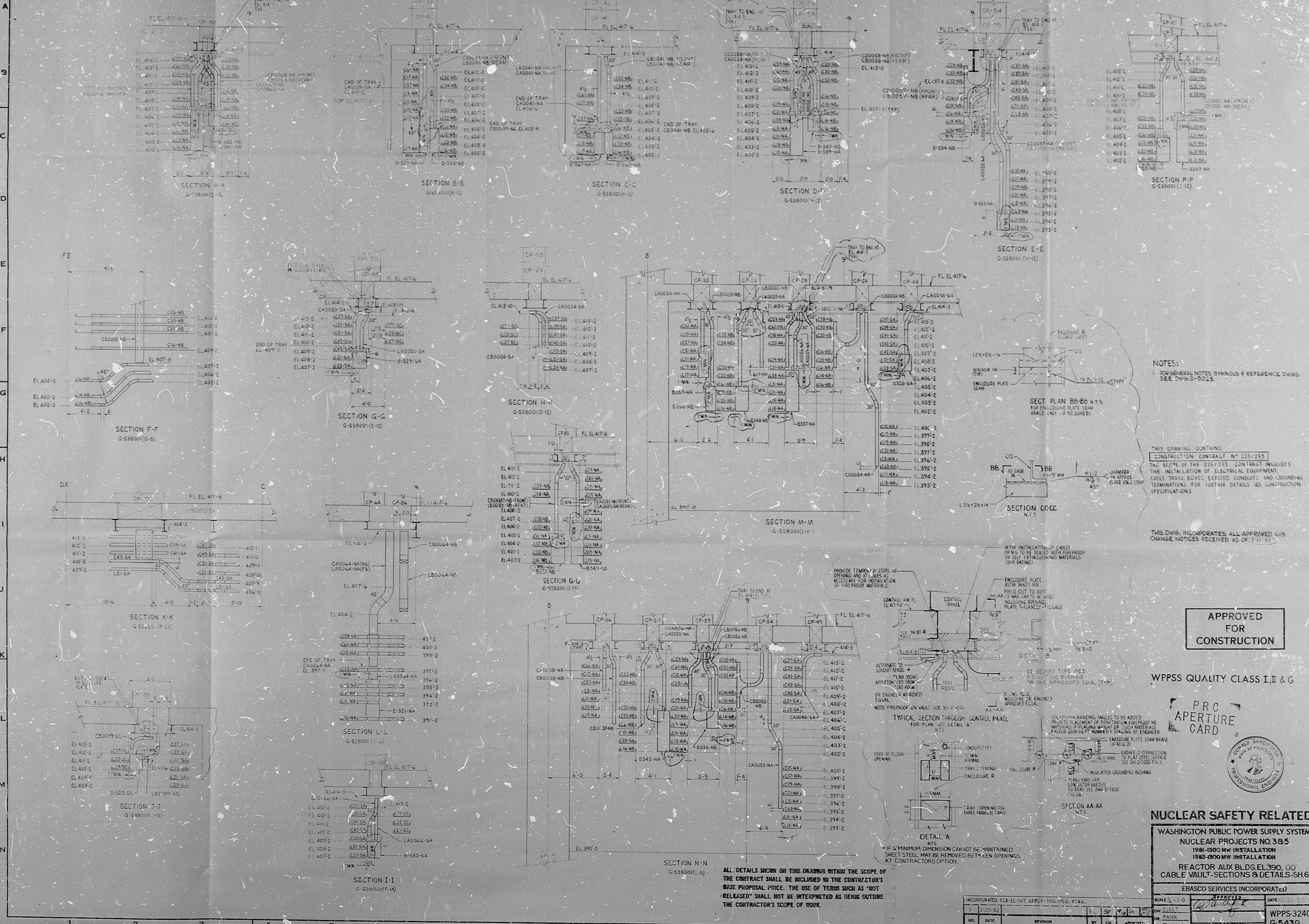


WPPS-3240-G-5439



NOTES:
 1. FOR GENERAL NOTES, SYMBOLS & REFERENCE DWGS. SEE DWG. D-5025.

THIS DRAWING CONTAINS
 CONSTRUCTION CONTRACT NO. 225/253
 THE SCOPE OF THE 225/253 CONTRACT INCLUDES
 THE INSTALLATION OF ELECTRICAL EQUIPMENT,
 CABLE TRAYS, EXPOSED CONDUITS AND GROUNDING
 TERMINATIONS. FOR FURTHER DETAILS SEE CONSTRUCTION
 SPECIFICATIONS.

THIS DWG. INCORPORATES ALL APPROVED 618
 CHANGE NOTICES RECEIVED AS OF 11/11/52.

APPROVED
 FOR
 CONSTRUCTION

WPPS QUALITY CLASS II, II & G

PRO
 APERTURE
 CARD

NUCLEAR SAFETY RELATED
 WASHINGTON PUBLIC POWER SUPPLY SYSTEM
 NUCLEAR PROJECTS NO. 3 & 5
 1981-1900 MW INSTALLATION
 1983-1900 MW INSTALLATION
 REACTOR AUX BLDG. EL. 390.00'
 CABLE VAULT - SECTIONS & DETAILS - SH-6

EBASCO SERVICES INCORPORATED

NO.	DATE	REVISION	BY	CHK	APPROVED

SCALE: 1/8" = 1'-0"
 DATE: 11-11-52
 WPPS-3240
 G-5439

ALL DETAILS SHOWN ON THIS DRAWING WITHIN THE SCOPE OF
 THE CONTRACT SHALL BE INCLUDED BY THE CONTRACTOR'S
 BASE PROPOSAL. THE USE OF TERMS SUCH AS "NOT
 RELEASED" SHALL NOT BE INTERPRETED AS BEING OUTSIDE
 THE CONTRACTOR'S SCOPE OF WORK.

PROVIDE TRIMMER 2" STOPS AT
 OPENING AND AT LINES AT
 1/2" INTERVAL FOR INSTALLATION
 OF FIREPROOF MATERIALS.

ALTERNATE TO
 200001 RWD-3
 1180 PPM
 AIRFLOW-1800
 180 PPM

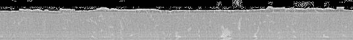
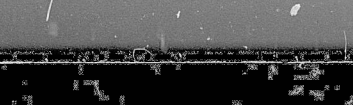
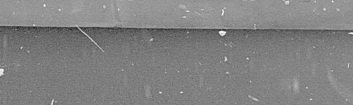
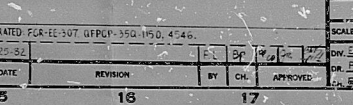
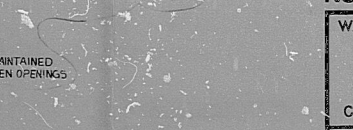
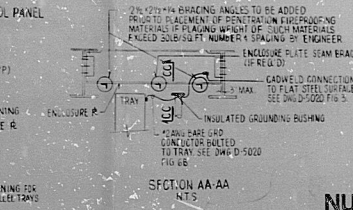
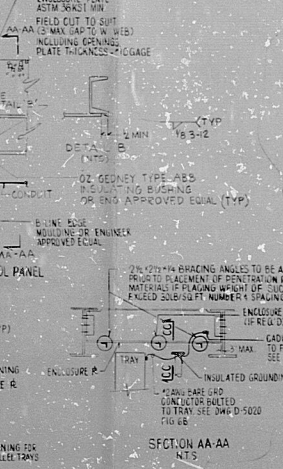
BY ENGINEER APPROVED
 EQUAL

NOTE: FIREPROOF ON WALLS TO BE BY OTHERS

TYPICAL SECTION THROUGH CONTROL PANEL
 FOR PLAN (SEE DETAIL A)

DETAIL A

IF MINIMUM DIMENSION CANNOT BE MAINTAINED
 SHEET STEEL MAY BE REMOVED BETWEEN OPENINGS
 AT CONTRACTOR'S OPTION.



RIDS

8303240258

