

5.0 SEPARATION (CONTD)

5.09 SEPARATION OF SELECTED NON-SAFETY RELATED CABLE TRAYS & CONDUITS

THE FOLLOWING FOUR (4) GROUPS OF NON-SAFETY RELATED CABLES SHALL BE SEPARATED FROM ONE ANOTHER (4 WAY SEPARATION) BUT CAN BE MIXED WITH OTHER NON-SAFETY RELATED CABLES OF THE SAME DIVISION NOT LISTED BELOW. THE NON-SAFETY RELATED TRAYS AND CONDUITS USED FOR THE ROUTING OF CABLE GROUPS LISTED BELOW SHALL BE SEPARATED FROM ONE ANOTHER (4 WAY SEPARATION) BY USING THE SAME CRITERIA AS BETWEEN SAFETY AND NON-SAFETY DIVISIONS AS SHOWN ON SH'S 7, 8, 8A, 8B & 9A EXCEPT FIG. 3 SH, 7 & FIG. 1, 3 & 4 SH, 8A.

GROUP # 1 (UNIT AUX TRANSF. 2A)	GROUP # 2 (UNIT AUX TRANSF. 2B)	GROUP # 3 (STANDBY TRANSF. 2A)	GROUP # 4 (STANDBY TRANSF. 2B)
CABLE NO.	CABLE NO.	CABLE NO.	CABLE NO.
30110A - NA B G H 30120A - NA B C D 30231A - NA 30041F - NA	30111A - NB B G H 30041E - NB 30121A - NB B C D 30282A - NB	30115A - NA B C D E 30136A - NA F H L M 30248A - NA 30125A - NA B C D	30116A - NB B C D E 30126A - NB B C D 30265A - NB

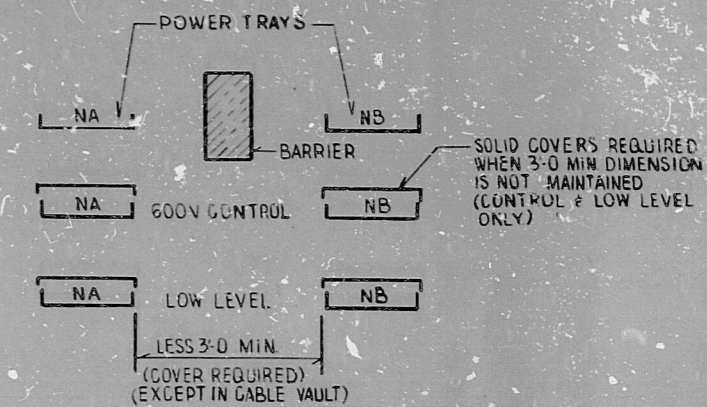


FIGURE 9
EXAMPLE OF ACCEPTABLE ARRANGEMENT WHERE HORIZONTAL SEPARATION DISTANCE CANNOT BE MAINTAINED.
NOTE: THE ABOVE CRITERIA APPLY ONLY TO TRAY SECTIONS CONTAINING SELECTED CABLES. SEE PAR. 5.09 THIS SH.

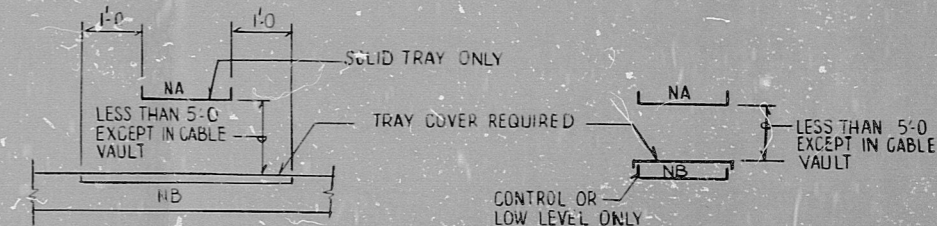


FIGURE 10
EXAMPLE OF ACCEPTABLE ARRANGEMENT WHERE VERTICAL SEPARATION DISTANCE CANNOT BE MAINTAINED.
NOTE: THE ABOVE CRITERIA APPLY ONLY TO TRAY SECTIONS CONTAINING SELECTED CABLES. SEE PAR. 5.09 THIS SH.

PRC
APERTURE
CARD

INCHES
CM

DCN-ED-76
INCORPORATED IN REV. 0

NUCLEAR SAFETY RELATED

WPPSS QUALITY CLASS II & G

5			
4			
3			
2			
1			
REV	DATE	BY	APPROVED

EBASCO SERVICES INCORPORATED
DIV. ELEC. DR. S.P.
CH. K. ENG
DATE MAY 7, 1982

APPROVED

[Signature]
[Signature]

WASHINGTON PUBLIC POWER
SUPPLY SYSTEM
NUCLEAR PROJECTS NO. 3 & 5
GENERAL NOTES, SYMBOLS AND
REFERENCE DRAWINGS

WPPS-3240
D-5023
SHEET 9A

RDS

8303240192

