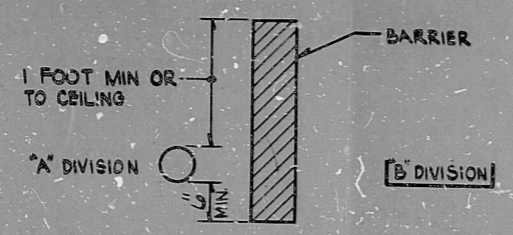


5.0 SEPARATION (CONTD)
 5.05 GENERAL PLANT AREAS - CONDUIT AND CONDUIT/CABLE TRAYS
 C. BARRIERS

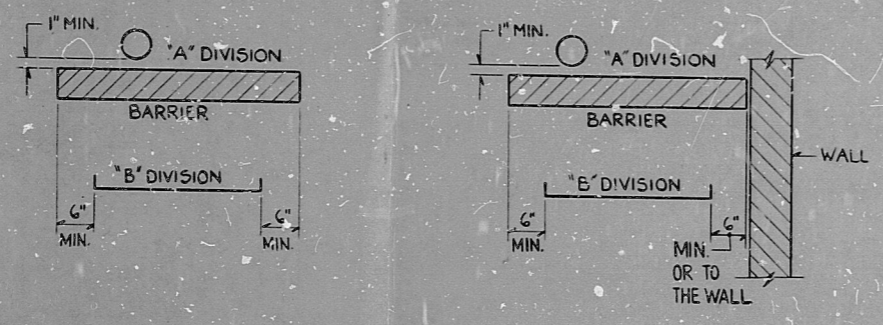
1. WHEN MINIMUM HORIZONTAL SEPARATION REQUIREMENTS CANNOT BE MET BETWEEN SAFETY DIVISIONS OR BETWEEN SAFETY DIVISIONS AND NON-SAFETY DIVISIONS BARRIERS ALTHOUGH NOT PREFERRED ARE ACCEPTABLE, THE BARRIERS SHALL BE UTILIZED IN ACCORDANCE WITH FIGURE 6.



EXAMPLE OF ACCEPTABLE ARRANGEMENT WHERE HORIZONTAL SEPARATION DISTANCE CANNOT BE MAINTAINED BETWEEN SAFETY DIVISIONS, OR BETWEEN SAFETY AND NON-SAFETY DIVISIONS.

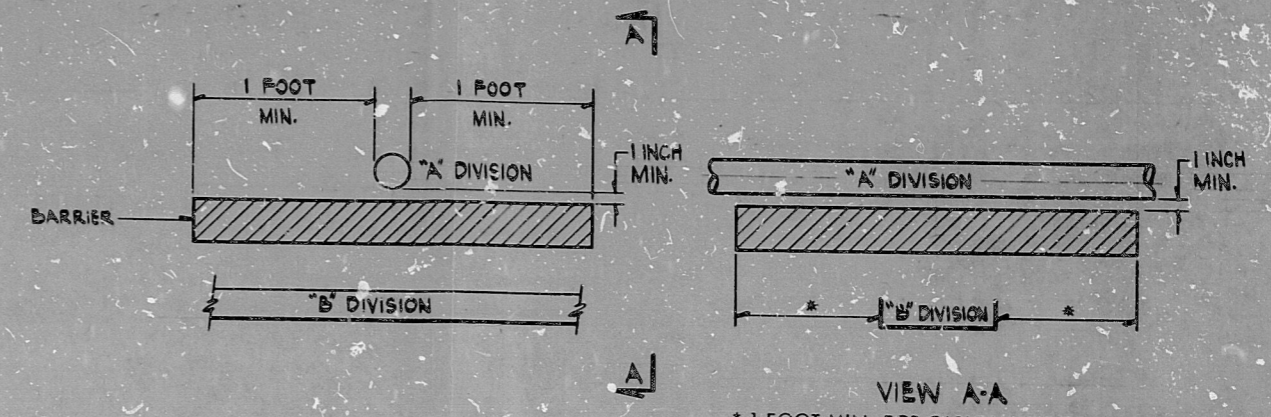
FIGURE 6

2. WHEN MINIMUM VERTICAL SEPARATION REQUIREMENTS CANNOT BE MET BETWEEN SAFETY DIVISIONS, OR BETWEEN SAFETY AND NON SAFETY DIVISIONS BARRIERS ALTHOUGH NOT PREFERRED ARE ACCEPTABLE, THE BARRIERS SHALL BE UTILIZED IN ACCORDANCE WITH FIGURES 7 OR 8.



EXAMPLE OF ACCEPTABLE ARRANGEMENT WHERE VERTICAL SEPARATION DISTANCE CANNOT BE MAINTAINED BETWEEN SAFETY DIVISIONS, OR BETWEEN SAFETY AND NON-SAFETY DIVISIONS.

FIGURE 7



EXAMPLE OF ACCEPTABLE ARRANGEMENT WHERE VERTICAL SEPARATION DISTANCE CANNOT BE MAINTAINED BETWEEN SAFETY DIVISIONS, OR BETWEEN SAFETY AND NON-SAFETY DIVISIONS.

FIGURE 8

PRC APERTURE CARD

5.06 THE SEPARATION REQUIREMENTS OF PARA. 5.05 APPLY TO SCHEDULED CONDUITS ONLY. THE MINIMUM HORIZONTAL AND VERTICAL SEPARATION DISTANCE BETWEEN NON SCHEDULED CONDUITS CONTAINING LIGHTING, COMMUNICATION, HEAT TRACING AND FREEZE PROTECTION CABLES AND SAFETY RELATED CONDUITS SHALL BE ONE INCH.

5.07 CONTROL ROOM & CABLE VAULT - CONDUITS AND CONDUITS/CABLE TRAYS

CONDUIT AND CONDUIT/TRAY SEPARATION CRITERIA WILL BE THE SAME CRITERIA AS SHOWN IN PARAGRAPH 5.05.

DCN-EE-76 79 INCORPORATED IN REV. 3

				NUCLEAR SAFETY RELATED		WPPSS QUALITY CLASS II & G	
				EBASCO SERVICES INCORPORATED			
				WASHINGTON PUBLIC POWER SUPPLY SYSTEM		WPPS-3240	
				DIV. ELEC. DR. E.M.		NUCLEAR PROJECTS NO. 3 & 5	
				CH. ESENKUS		GENERAL NOTES, SYMBOLS AND REFERENCE DRAWINGS	
				DATE APR 10, 1979		D-5073	
				APPROVED		SHEET 8B	
REV.	DATE	BY	APPROVED				
5							
4							
3	5-7-82	SP					
2	7-21-81	QM					
1	8-22-80	SP					

17"
11"
8.5"
11"
17"

RID₂

8303240186

