

5.0 SEPARATION

THE DESIGN OF SAFETY RELATED TRAY & CONDUITS IS BASED ON THE FOLLOWING CRITERIA. IN THE EVENT THAT THIS SEPARATION CANNOT BE MAINTAINED THE CONTRACTOR SHALL ADVISE THE ENGINEER OF SUCH AND OBTAIN FROM THE ENGINEER APPROVAL PRIOR TO PERFORMING ANY MODIFICATIONS. FOR SEPARATION OF SELECTED NON-SAFETY RELATED TRAYS AND CONDUITS SEE PARA. 5.09 (SH, 7A).

5.01 GENERAL PLANT AREAS - CABLE TRAY

IN PLANT AREAS WHERE POTENTIAL HAZARDS SUCH AS MISSILES, EXTERNAL FIRES, PIPE WHIP & JET IMPINGEMENT ARE EXCLUDED, THE MINIMUM CLEAR SPACE SEPARATION DISTANCE BETWEEN DIVISIONS OF CABLE TRAYS SHALL BE THREE (3) FEET BETWEEN TRAYS SEPARATED HORIZONTALLY AND FIVE (5) FEET BETWEEN TRAYS SEPARATED VERTICALLY.

A HORIZONTAL SEPARATION

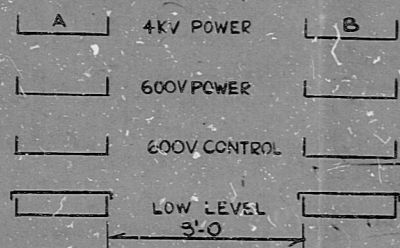


FIGURE 1

HORIZONTAL SEPARATION BETWEEN SAFETY DIVISIONS AND BETWEEN SAFETY & NON-SAFETY DIVISIONS.

WHEN MINIMUM HORIZONTAL SEPARATION REQUIREMENTS CANNOT BE MET BETWEEN SAFETY DIVISIONS OR BETWEEN SAFETY DIVISIONS AND NON-SAFETY DIVISIONS, BARRIERS ALTHOUGH NOT PREFERRED ARE ACCEPTABLE, THE BARRIERS SHALL BE UTILIZED IN ACCORDANCE WITH FIGURE 3.

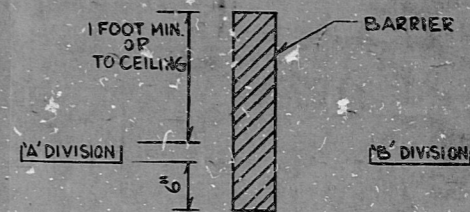


FIGURE 3

EXAMPLE OF ACCEPTABLE ARRANGEMENT WHERE HORIZONTAL SEPARATION DISTANCE CANNOT BE MAINTAINED BETWEEN SAFETY DIVISIONS OR BETWEEN SAFETY & NON-SAFETY DIVISIONS.

B VERTICAL SEPARATION

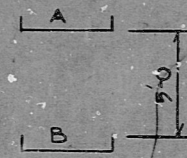


FIGURE 4

VERTICAL SEPARATION BETWEEN SAFETY DIVISIONS AND BETWEEN SAFETY & NON-SAFETY DIVISIONS.

PRC APERTURE CARD

DCN-ED-76  
INCORPORATED IN REV. 3

REV.	DATE	BY	APPROVED
3			
4			
3	5-7-82	SP	[Signature]
2	8-22-80	SP	[Signature]
1	4-10-79	ES	[Signature]

ESASCO SERVICES INCORPORATED

DIV. ELECT. OR. EM  
CH. P. ABRAMOWITZ

DATE: MAY 19, 1978

NUCLEAR SAFETY RELATED WPPSS QUALITY CLASS 1, 1.66

WASHINGTON PUBLIC POWER  
SUPPLY SYSTEM  
NUCLEAR PROJECTS NO. 3 & 5  
GENERAL NOTES, SYMBOLS AND  
REFERENCE DRAWINGS

WPPSS-2200

11

11

5'8"

8.5"

11"

17"

RIDS

8303240180

