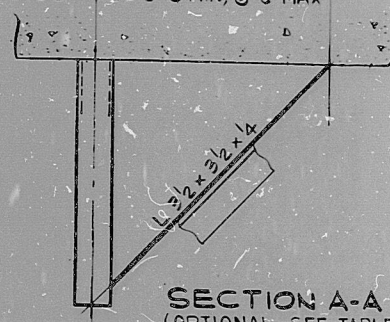


TYPE RB-V2

ELEVATION	MAX COND LOAD IN LBS
PLATFORM AT EL 395'-0" & BELOW	650
PLATFORM AT EL 425'-0" & BELOW	400
INTERN. STRUCT. & CONT. VSL MOUNTED UP TO EL 425'-0"	400

PLATE MTD S1 L=1'-6"  
PLATE MTD S2 L=3'-0"  
CONC MTD S1 L=1'-6" MIN, 6'-0" MAX  
CONC MTD S2 L=3'-0" MIN, 6'-0" MAX



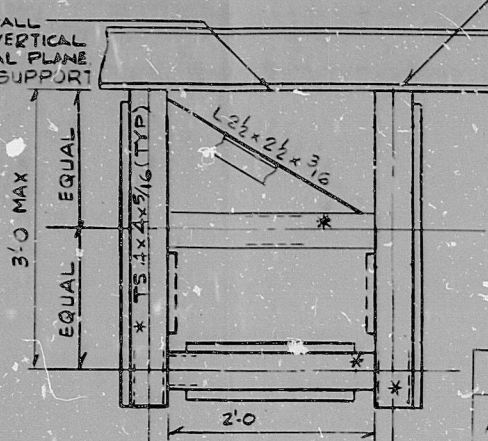
SECTION A-A \*\*\*  
(OPTIONAL - SEE TABLE)

TYPE RB-S1 & RB-S2 MAX CONDUIT LOAD IN LBS

ELEVATION	MOUNTING CONDITION AT SUPPORT	TUBE SIZE	MAX COND LOAD IN LBS			
			RB-S1	RB-S2	WITH BRACING	WITHOUT BRACING
PLATFORM AT EL 395'-0" & BELOW	HINGED (CEILING OR COL)	4x4x3/16	1245	1000		
	FIXED (CEILING OR COL)	3 1/2 x 3 1/2 x 3/16			645	750
PLATFORM AT EL 425'-0" & BELOW	HINGED (CEILING OR COL)	4x4x3/16	645	700		
	FIXED (CEILING OR COL)	3 1/2 x 3 1/2 x 3/16			345	400
INTERN. STRUCT. & CONT. VSL MOUNTED UP TO EL 425'-0"	HINGED (C/M, W/M)	4x4x3/16	525	800		
	FIXED (C/M, W/M)	3 1/2 x 3 1/2 x 3/16			400	285

PLATFORM STEEL OR EMBEDDED PLATE TYPE P1 (MIN.) OR CONT. VSL PAD R

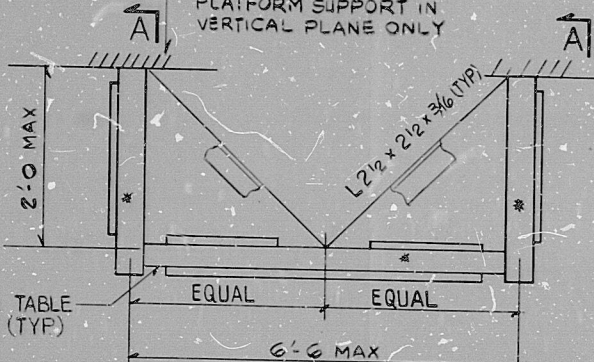
CEILING OR WALL SUPPORTS IN VERTICAL OR HORIZONTAL PLANE OR PLATFORM SUPPORT IN VERTICAL PLANE ONLY



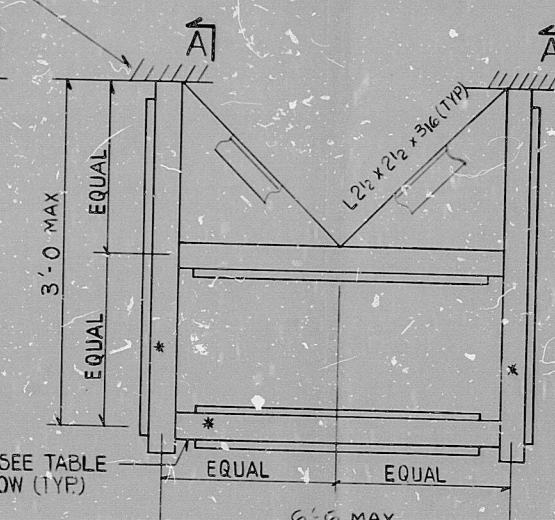
TYPE RB-W2

ELEVATION	MAX COND LOAD IN LBS
PLATFORM AT EL 395'-0" & BELOW	1200
PLATFORM AT EL 425'-0" & BELOW	600
INTERN. STRUCT. & CONT. VSL MOUNTED UP TO EL 425'-0"	600

EMB R P1 (MIN) FOR CEILING OR WALL \*\*\* SUPPORTS IN VERTICAL OR HORIZONTAL PLANE, OR PLATFORM SUPPORT IN VERTICAL PLANE ONLY



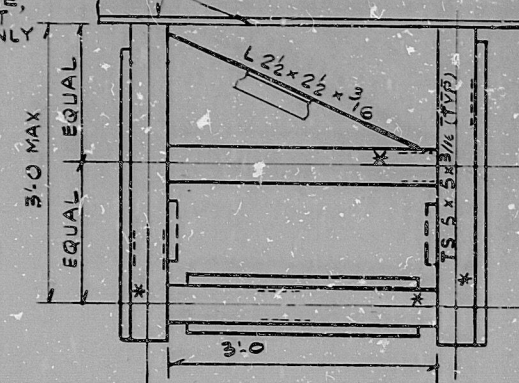
TYPE RB-S1  
FOR MAX. COND. LOAD SEE TABLE BELOW



TYPE RB-S2  
FOR MAX. COND. LOAD SEE TABLE BELOW

PLATFORM STEEL OR EMBEDDED PLATE TYPE P5 (MIN.) OR CONT. VSL PAD R

CEILING OR WALL SUPPORTS IN VERTICAL OR HORIZONTAL PLANE, OR PLATFORM SUPPORT IN VERTICAL PLANE ONLY



TYPE RB-X2

ELEVATION	MAX COND LOAD IN LBS
PLATFORM AT EL 395'-0" & BELOW	1300
PLATFORM AT EL 425'-0" & BELOW	720
INTERN. STRUCT. & CONT. VSL MOUNTED UP TO EL 425'-0"	720

NOTES:  
ALL DIMENSIONS ± 3 UN.  
\* RB-FA1 OR RB-FA2 AS REQUIRED OR SEE OPTIONAL DETAILS SH. 55-35  
\*\*\* ATTACHMENT TO CONT. VSL CLIP R'S ALLOWED WHEN OPT. BRG IS USED.

PLATE	CAPACITY	SEQUENCE
P2		
P1		
P4		
P5		
TYPE III		
BI		
TYPE IV		
TYPE V		
TYPE VI		
TYPE VII		
TYPE VIII		

PRC  
APERTURE  
CARD

THIS SHEET IS FOR SEISMIC APPLICATIONS IN REACTOR BLDG. AND CONDENSATE & REFUELING WATER STORAGE TANK AREA AS INDICATED IN NOTE 3.04-9, SH. 5B.

REV.	DATE	BY	APPROVED
5			
4			
3			
2			
1			

EBASCO SERVICES INCORPORATED

DIV. ELEC. DR. QM  
CH. K. ENG.

DATE JULY 21, 1981

NUCLEAR SAFETY RELATED

WPPSS QUALITY CLASS I, II & G

WASHINGTON PUBLIC POWER  
SUPPLY SYSTEM  
NUCLEAR PROJECTS NO. 3 & 5  
GENERAL NOTES, SYMBOLS AND  
REFERENCE DRAWINGS

WPPS-3240

D-5025

SHEET 55-32



8303240165

